

Demographic Trends in the City of Kalamazoo

Challenges:

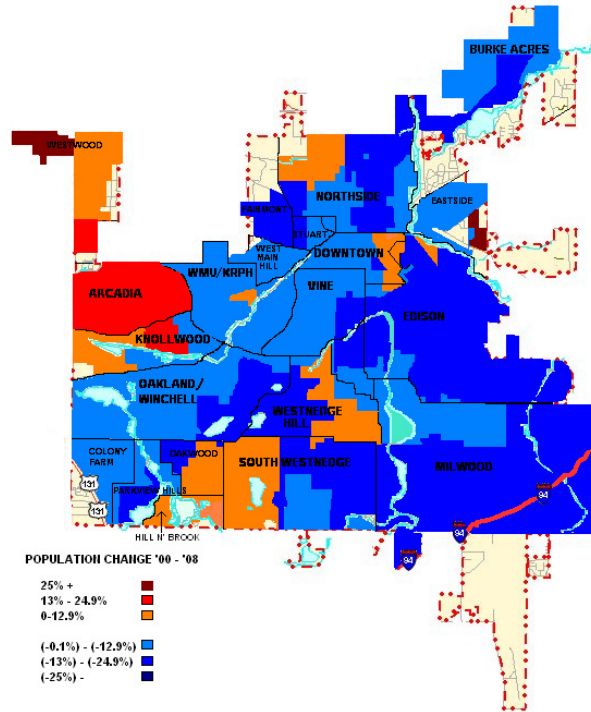
- > Since the 1980s Kalamazoo's population has fallen
- > Average incomes low - 1/3 of residents live in poverty

Strengths:

- > Relatively youthful population
- > Population stabilized in 2008
- > Kalamazoo is a college town with well educated people

Population Change in City Neighborhoods

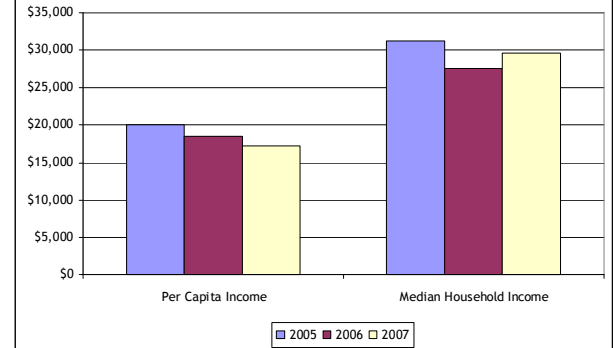
- > U.S. Census shows from 2000 to 2008 Kalamazoo's population fell 6.4%, from 77,145 to 72,179



Income and Poverty

- ❖ Incomes in Kalamazoo have declined over the past several years
- ❖ Incomes are very low overall compared to the region
- ❖ Kalamazoo City's 2007 per capita income was \$17,189 - median household income was \$29,592
- ❖ Kalamazoo County's 2007 per capita income was \$24,251 - median household income was \$43,861

Measures of Income in Kalamazoo City



- > In 2007 more than one-third of Kalamazoo's residents lived in poverty
- > 2007 poverty rate in Kalamazoo County was 16.4%
- > In 2007 nearly 60% of Kalamazoo County residents in poverty lived in Kalamazoo
- > Between 2005 and 2007 Kalamazoo's poverty rate increased more than five percentage points
- > Current data not yet available - likely that poverty continues to grow due to national recession
- > Poverty is a family problem in Kalamazoo - in 2007 39.3% of children lived in poverty

Neighborhood-Level Population and Household Estimates

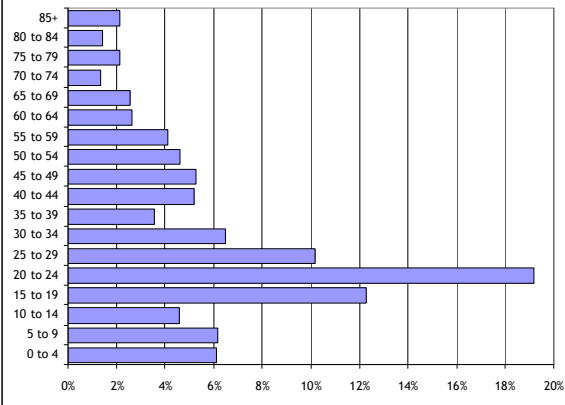
Neighborhood	2008 Number of Dwelling Units			Population Change 2000 to 2008
	Total	Multi-Family	Single Family	
Arcadia	1,722	471	1,251	20.0%
Burke Acres	1,915	153	1,762	-6.7%
Colony Farm	391	17	374	-14.0%
Downtown	1,231	561	670	-6.2%
Eastside	1,402	427	975	9.4%
Edison	3,017	288	2,729	-21.9%
Fairmount	511	14	497	-24.0%
Hill N' Brooks	236	0	236	6.0%
Knollwood	1,101	417	684	6.7%
Milwood	3,082	757	2,325	-11.9%
Northside	2,999	345	2,654	-9.8%
Oakland/Winchell	1,046	156	890	-9.9%
Oakwood	1,163	17	1,146	-8.1%
Parkview Hills	806	463	343	-7.9%
Southside	496	3	493	-21.0%
S. Westledge	2,531	1,003	1,528	-11.6%
Vine	2,249	288	1,961	-10.2%
W. Mail Hill	259	0	259	-6.0%
Westledge Hill	1,975	490	1,485	-3.5%
Westwood	1,742	805	937	16.5%
WMU	1,694	491	1,203	-6.1%

Source: USPS route data.

Age Profile

- > College-age residents are a big part of the City's population

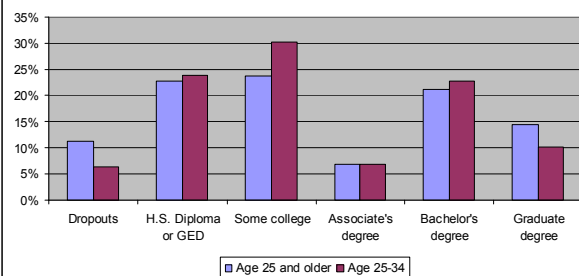
2007 City Population Share by Age



Educational Attainment

- > Kalamazoo's residents are relatively well educated
- > In 2007, 35.5% of residents age 25+ had a bachelor's degree or higher - compared to 27.5% nationally

2007 Educational Attainment



Kalamazoo City Poverty Rates

