

INDEX OF SHEETS	
SHT NO.	TITLE
1	TITLE SHEET
2	EXISTING AND PROPOSED ROADWAY CROSS SECTIONS
3	LEGEND, NOTES, AND DETAILS
4	MAPLE STREET PLAN STA. 10+30 (P.O.B.) TO STA. 15+85
5	MAPLE STREET PLAN STA. 15+85 TO STA. 22+25
6	MAPLE STREET PLAN STA. 22+25 TO STA. 28+56 (P.O.E.)
7	GRADING PLAN
8	PAVEMENT MARKING AND PERMANENT SIGNAGE PLAN - 1
9	PAVEMENT MARKING AND PERMANENT SIGNAGE PLAN - 2
10	PAVEMENT MARKING AND PERMANENT SIGNAGE PLAN - 3
11	MAINTENANCE OF TRAFFIC PLAN
12	CITY OF KALAMAZOO NOTES AND DETAILS



CITY OF KALAMAZOO

2023 MAPLE STREET RESURFACING PROJECT

TRAFFIC DATA

MAPLE STREET (PARK ST. TO BURDICK ST.)	YEAR 2022	YEAR 2042
ADT =	5,230	7,770
DHV =	260	70
% COMMERCIAL =	1%	1%
DESIGN SPEED =	25 MPH	
POSTED SPEED =	25 MPH	

CITY OF KALAMAZOO OFFICIALS

DAVID ANDERSON	MAYOR
DON COONEY	VICE MAYOR
JEANNE HESS	CITY COMMISSIONER
CHRIS PRAEDEL	CITY COMMISSIONER
QIANNA DECKER	CITY COMMISSIONER
STEPHANIE HOFFMAN	CITY COMMISSIONER
ESTEVEN JUAREZ	CITY COMMISSIONER
JAMES K. RITSEMA	CITY MANAGER
JAMES BAKER, PE	DEPT OF PUBLIC WORKS DIRECTOR

MDOT STANDARD PLANS

R-28-J SIDEWALK RAMP AND DETECTABLE WARNING DETAILS
R-29-I DRIVEWAY OPENINGS & APPROACHES AND CONCRETE SIDEWALKS

MDOT TRAFFIC AND SAFETY STANDARD PLANS

WZD-100-A GROUND DRIVEN SIGN SUPPORTS FOR TEMPORARY SIGNS*
WZD-125-E TEMPORARY TRAFFIC CONTROL DEVICES*
110-TR-NFW-2L TEMPORARY TRAFFIC CONTROL TYPICALS*
* DENOTES SPECIAL/MODIFIED DETAIL

NOTES:

EXCEPT WHERE OTHERWISE INDICATED ON THESE PLANS OR IN THE PROPOSAL AND SUPPLEMENTAL SPECIFICATIONS CONTAINED THEREIN, ALL MATERIALS AND WORKMANSHIP SHALL BE IN ACCORDANCE WITH THE 2020 MICHIGAN DEPARTMENT OF TRANSPORTATION STANDARD SPECIFICATIONS FOR CONSTRUCTION.

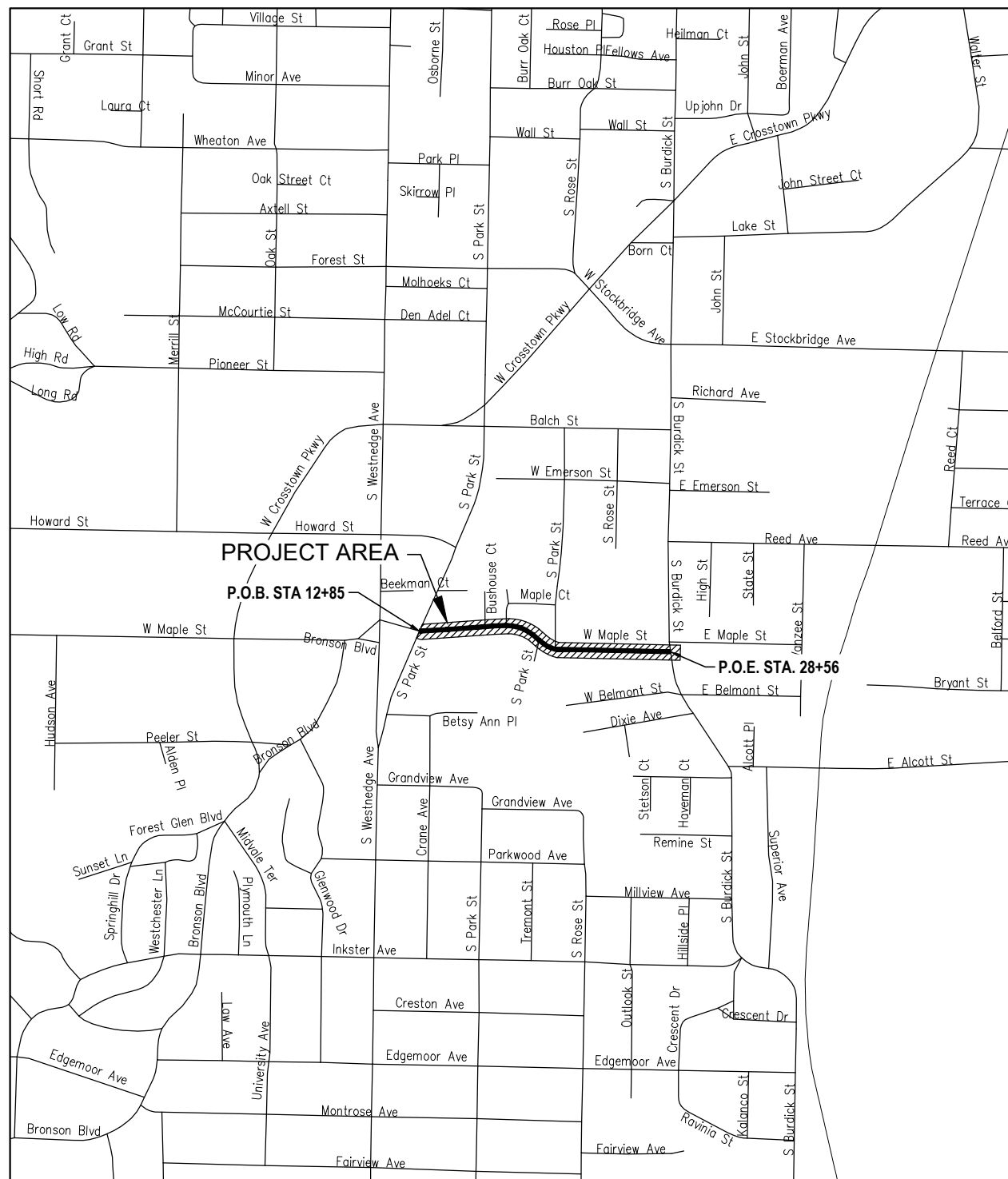
PROJECT BEARINGS AND HORIZONTAL CONTROL ARE RELATED TO THE MICHIGAN STATE PLANE COORDINATE SYSTEM, SOUTH ZONE, NORTH AMERICAN DATUM OF 1983 (2011 ADJUSTMENT).

ELEVATIONS ARE RELATED TO THE NORTH AMERICAN VERTICAL DATUM OF 1988, AS DERIVED FROM GPS OBSERVATIONS CONNECTED TO THE MICHIGAN CONTINUOUSLY OPERATING REFERENCE STATION REAL-TIME NETWORK.



KALAMAZOO COUNTY

COUNTY KEY
NOT TO SCALE



PROJECT LOCATION MAP
NOT TO SCALE

LOCAL UTILITIES

SEWER, WATER & STORM:
CITY OF KALAMAZOO
241 W SOUTH STREET
KALAMAZOO, MI 49007
WILL EICHELBERGER
eichelbergerw@kalamazoo-city.org

TELEPHONE:
METRONET
133800 E. MICHIGAN AVE.
GALESBURG, MI 49053
KIRK KIMMEL
(616) 239-9139
kirk.kimmel@metronet.com

ELECTRIC & STREET LIGHTS:
CONSUMERS ENERGY
2500 EAST CORK ST.
KALAMAZOO, MI 49001
ANDRE TAYLOR
(269) 337-2245
andre.taylor@cmsenergy.com

CABLE TV:
CHARTER COMMUNICATIONS
4176 COMMERCIAL AVE.
PORTAGE, MI 49002
DAN BIELACZYC
dan.bielaczyc@charter.com
ASHLEY MARCOLETTE
ashley.marcolette@ccsystems.com
twc_utility_requests@ccsystems.com

GAS:
CONSUMERS ENERGY
2500 EAST CORK ST.
KALAMAZOO, MI 49001
KYLE OAK
(269) 337-2366
kyle.oak@cmsenergy.com

CABLE TV:
COMCAST
MICHIGAN RELOCATION TEAM
CENHRT-MI_Comcast_Relo@comcast.com
CAMILLA DEAN
Pcomcast@teamsigma.com

TELEPHONE:
AT&T
2919 MILLCORK ROAD
KALAMAZOO, MI 49001
LASHAUNDR WILSON
lw1232@att.com
PHIL BARDOCZ
pb3132@att.com

FIBER OPTIC:
CENTURY LINK
cl_irth_comm@irth.com
SADIE HULL
sadie.hull@lumen.com
HOLDEN BOYDEN
holden.boyden@lumen.com
relocations@lumen.com
DAVID HUCKFELDT
dave.huckfeldt@lumen.com

FIBER OPTIC:
COMCAST
MICHIGAN RELOCATION TEAM
CENHRT-MI_Comcast_Relo@comcast.com

FIBER OPTIC:
ZAYO BANDWIDTH
GREG BABINSKI
greg.babinski@zayo.com

CALL MISS DIG

1-800-482-7171 OR 811

FOR PROTECTION OF THE UNDERGROUND UTILITIES, THE CONTRACTOR SHALL CALL MISS DIG A MINIMUM OF THREE FULL WORKING DAYS, EXCLUDING SATURDAYS, SUNDAYS, AND HOLIDAYS PRIOR TO BEGINNING CONSTRUCTION OPERATIONS. MEMBERS WILL BE ROUTINELY NOTIFIED. THIS DOES NOT RELIEVE THE CONTRACTOR OF THE RESPONSIBILITY OF NOTIFYING UTILITY OWNERS WHO MAY NOT BE PART OF THE "MISS DIG" ALERT SYSTEM.

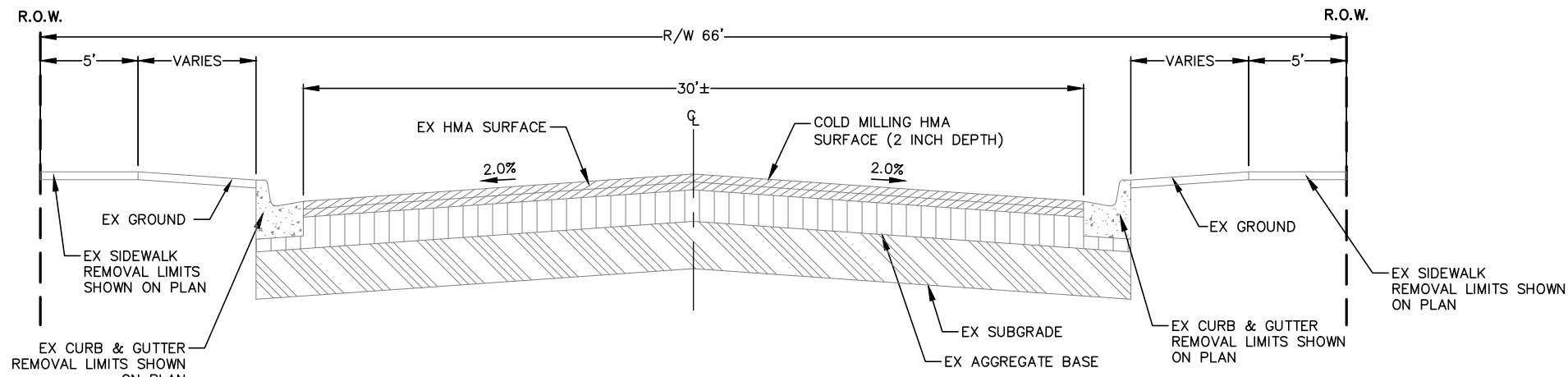


Know what's below.
Call before you dig.

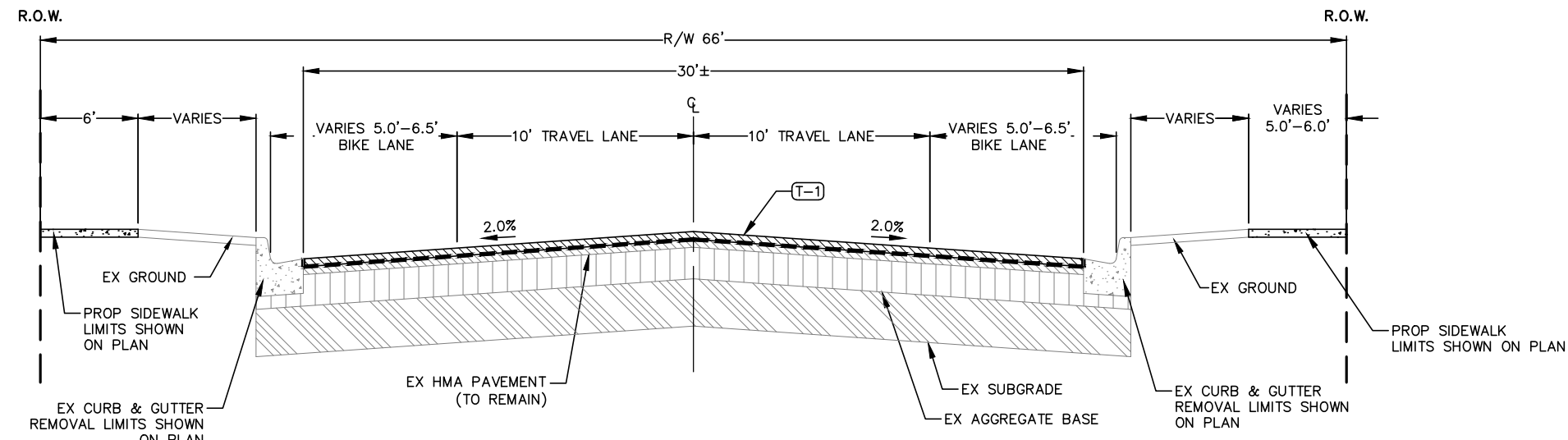


DATE: JANUARY 2023
COPYRIGHT 2022 - ABONMARCHE CONSULTANTS, INC.

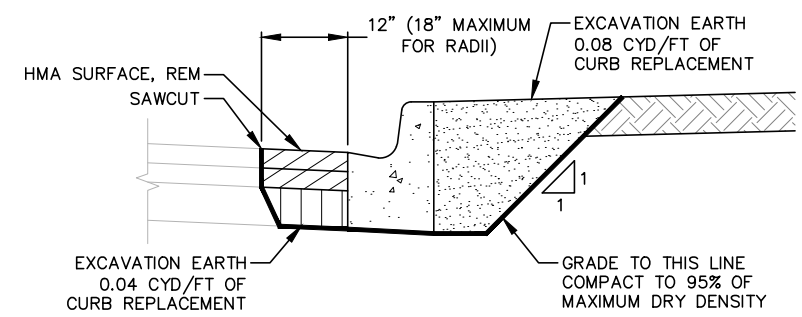
O:\Projects\2022\22-0208 COK-Maple Street Resurfacing\CAD\Civil\Plan Sheets\22-0208 01 Notes and Details.dwg, CS-01, 2/1/2023 5:27:14 PM, mmcgwire, 1:1



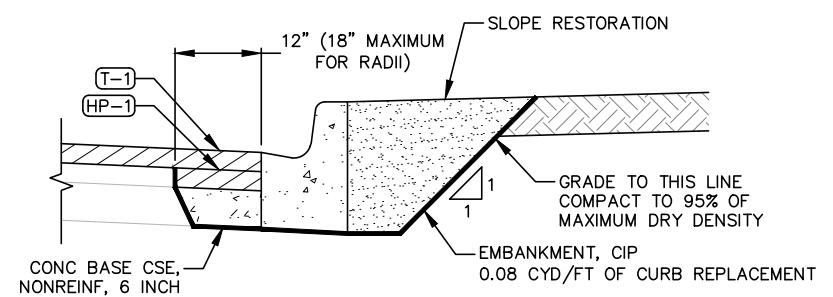
**EXISTING ROADWAY SECTION
MAPLE STREET**
(NOT TO SCALE)



**PROPOSED ROADWAY RESURFACING SECTION
MAPLE STREET**
(NOT TO SCALE)



EX CURB AND GUTTER REMOVALS
(NOT TO SCALE)



CURB AND GUTTER REPLACEMENT
(NOT TO SCALE)

Miscellaneous Quantities		
THE FOLLOWING ITEMS SHALL BE DONE AS THEY APPLY THROUGHOUT THE PROJECT AS DIRECTED BY THE ENGINEER. THESE ITEMS ARE NOT DETAILED OR INCLUDED IN THE PLAN SHEETS		
	Unit	Sht 2 Quantity
Mobilization, Max	LSUM	1
Curb and Gutter, Rem	Ft	25
Sidewalk, Rem	Syd	10
Erosion Control, Inlet Protection, Fabric Drop	Ea	18
Subbase, CIP	Cyd	20
Geotextile, Separator	Syd	60
Dr Structure Cover, Type B, Modified	Ea	3
Dr Structure Cover, Type K, Modified	Ea	1
Dr Structure, Reconstruct	Ea	5
Hand Patching	Ton	10
Cement	Ton	5
Reinforcement, Steel Mesh	Lb	140
Curb and Gutter, Conc, Det C4	Ft	25
Sidewalk, Conc, 4 inch	Sft	90
Monument Box	Ea	2
Monument Preservation	Ea	2

ID	MIXTURE	RATE (LBS/SYD)	PERFORMANCE GRADE	TYPE
(T-1)/(HA-1)	HMA, 36A	220	58 - 28	WEARING COURSE (AWI=260)
(HP-1)	HMA, 13A	220	58 - 28	BASE LEVELING COURSE

- NOTES:
- HMA BOND COAT 0.05 TO 0.15 GAL/SYD REQUIRED BETWEEN ASPHALT LIFTS. ENSURE FULL COVERAGE OF ASPHALT SURFACE WITH BOND COAT PRIOR TO PAVING. (NOT A PAY ITEM)
 - APPLY BOND COAT TO VERTICAL SURFACES OF ALL EXISTING HMA OR CONCRETE PAVEMENT, CURBS, AND GUTTERS ADJACENT TO NEW HMA PAVEMENT.
 - APPLY BOND COAT TO VERTICAL SURFACES OF PREVIOUSLY PLACED HMA PAVEMENT WITH THE TEMPERATURE OF THE PREVIOUSLY PLACED PAVEMENT FALLS BELOW 170°F OR WHEN AIR TEMPERATURE IS BELOW 50°F.
 - CHIPPING OF REMAINING ASPHALT AT BUTT JOINTS, CURB LINES, MONUMENT BOXES, WATER VALVE BOXES, AND DRAINAGE STRUCTURES SHALL BE INCLUDED IN THE PAY ITEM: "COLD MILLING, HMA SURFACE"
 - PLACE W8-1 "BUMP" WARNING SIGNS A MINIMUM OF 50 FEET IN ADVANCE OF TRANSITION MILLING LIMITS ALL NAMED CROSS STREETS.
 - PROVIDE GRADE 3500 CONCRETE FOR CONCRETE DRIVEWAYS, CONCRETE CURBS, CONCRETE SIDEWALK, CURB RAMPS, AND CURB RAMP OPENINGS. PROVIDE CONCRETE GRADE 3000 OR 3500 MAY BE USED FOR CONC BASE COURSE.

	EX HMA		AGGREGATE BASE		SUBBASE, CIP OR SUBGRADE
	PROP HMA SURFACE		CONCRETE		TOPSOIL/TURF

ABONMARCHÉ
 95 West Main Street
 Benton Harbor, MI, 49023
 T 269.927.2295
 F 269.927.1017
 abonmarche.com

Lafayette
 Portage
 South Bend
 Valparaiso

Benton Harbor
 Ft. Wayne
 Goshen
 Grand Haven
 Hobart

Engineering - Architecture - Land Surveying
 COPYRIGHT 2022 - ABONMARCHÉ CONSULTANTS, INC.

**CITY OF KALAMAZOO
2022 LOCAL STREET
MAPLE STREET RESURFACING**

**EXISTING AND PROPOSED
ROADWAY CROSS SECTIONS**

SHEET TITLE: EXISTING AND PROPOSED ROADWAY CROSS SECTIONS

DRAWN BY: JLW

DESIGNED BY: DAD

PM REVIEW: DAD

QA/QC REVIEW:

DATE: JANUARY 2023

SCALE: HORZ: 1" = 10'
VERT: N/A

ACI JOB #: 22-0208

SHEET NO.:

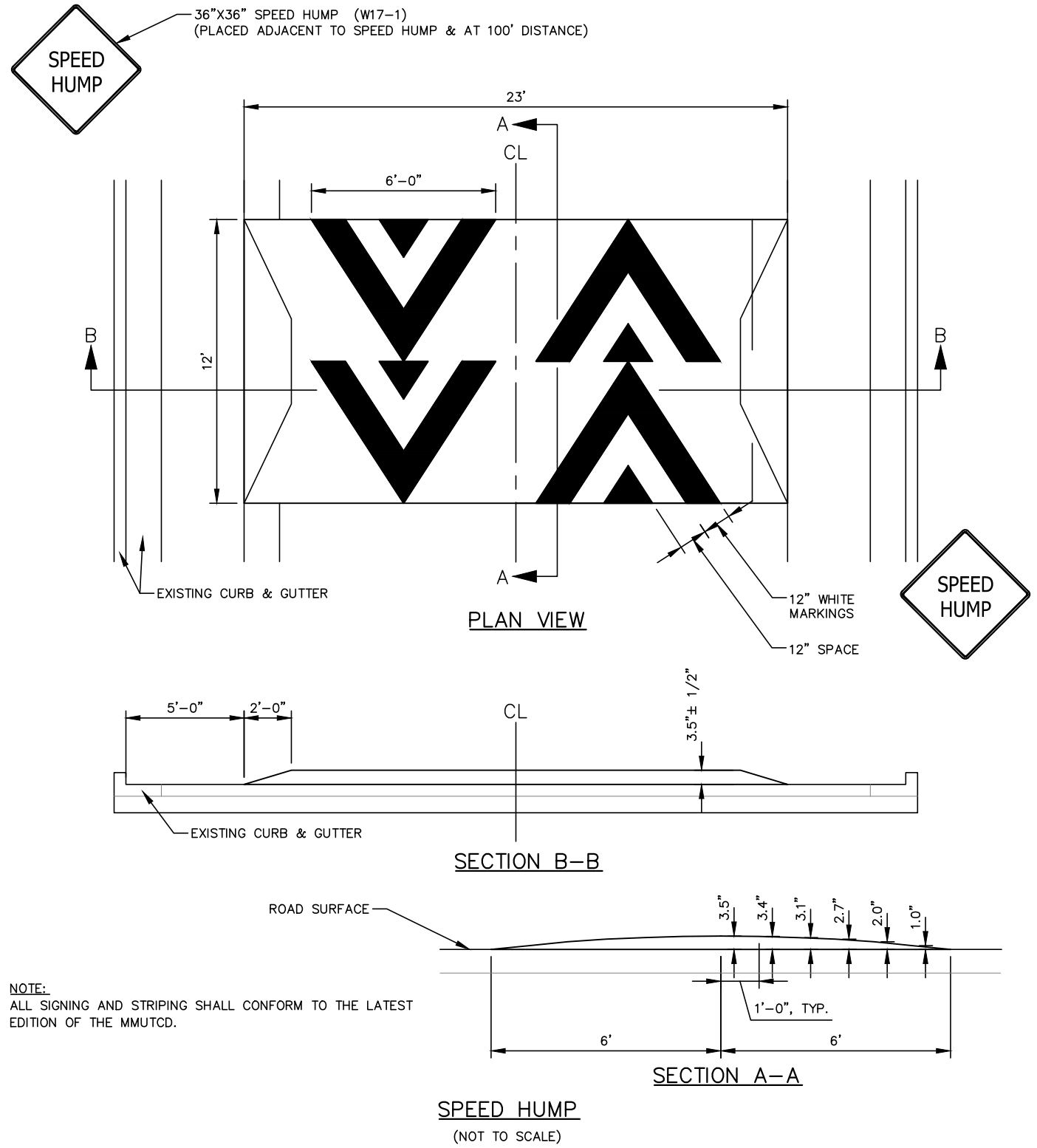
NO.	REVISION DESCRIPTION:	BY:	DATE:

GENERAL NOTES:

- MDOT STANDARD SPECIFICATIONS FOR CONSTRUCTION, 2020 EDITION SHALL PREVAIL, UNLESS INDICATED OTHERWISE.
- THREE WORKING DAYS PRIOR TO CONSTRUCTION, THE CONTRACTOR SHALL REQUEST THE LOCATION OF ALL UTILITIES BY CALLING MISS DIG. REGARDLESS OF DURATION, NO EXCAVATION WORK SHALL BE UNDERTAKEN UNTIL MISS DIG TICKETS HAVE CLEARED.
- THE CONTRACTOR SHALL INCLUDE TWO (2) SETS OF TWO (2) HMA EXTRACTION TESTS, PER MIX, BY AN INDEPENDENT CONSULTANT AND PROVIDE THE TESTING RESULTS TO THE ENGINEER. THE FIRST SET OF TESTS SHALL BE CONDUCTED DURING PLACEMENT OF THE FIRST 500 TONS OF ASPHALT. THE SECOND SET OF TESTS SHALL BE CONDUCTED AFTER 50% OF THE TOTAL TONNAGE FOR THE PROJECT HAS BEEN PLACED. PAYMENT FOR THIS TESTING WORK IS TO BE INCLUDED IN HMA RELATED ITEMS OF WORK.
- ALL MOBILIZATION COSTS ARE TO BE INCLUDED IN OTHER ITEMS OF WORK.
- TRAFFIC CONTROL SHALL COMPLY WITH MDOT CURRENT STANDARD SPECIFICATIONS FOR CONSTRUCTION, STANDARD PLANS, AND THE CURRENT MICHIGAN MANUAL OF UNIFORM TRAFFIC CONTROL DEVICES.
 - SUBMIT DRAWINGS FOR PROPOSED DETOUR ROUTES AND CLOSURES. PROVIDE THE ENGINEER AND THE OWNER A MINIMUM OF 48 HOURS NOTICE AND RECEIVE APPROVAL BEFORE IMPLEMENTING A LANE CLOSURE OR DETOUR.
 - IMPLEMENT FLAG CONTROL AND MAINTAIN ONE THROUGH LANE AT ALL ITEMS. THE COST FOR FLAG CONTROL SHALL BE INCLUDED IN OTHER ITEMS OF WORK.
- ASPHALT MATERIALS SHALL BE AS FOLLOWS:
 - TOP COURSE: HMA, 36A
 - LEVELING COURSE: HMA, 13A
 - PERFORMANCE GRADE: 58-28
 - AGGREGATE WEAR INDEX (AWI): 260 (FOR TOP COURSES)
 - BOND COAT: SH-1H, CSS 1-H (APPLICATION RATE: 0.05 - 0.15 GAL/SYD)
- LONGITUDINAL PAVEMENT MARKINGS SHALL BE WATERBORNE. TRANSVERSE PAVEMENT MARKINGS, ARROWS, CROSSHATCHING AND SYMBOLS SHALL BE OVERLAY COLD PLASTIC OR POLYUREA.
- OWNER SHALL FURNISH REPLACEMENT SANITARY MANHOLE CASTINGS, WHERE DESIRED, FOR INSTALLATION BY THE CONTRACTOR ON EXISTING STRUCTURES.
- ALL DETECTABLE WARNING SURFACES SHALL BE MADE OF COLONIAL RED COMPOSITE OR CAST IRON.
- ALL FLEXIBLE DELINEATORS SHALL BE PEXCO FG 300 SERIES OR APPROVED EQUAL.

STANDARD LEGEND

CB	= CATCH BASIN	∅ _{PP/D}	= POWER POLE W/DROP	— W —	= EXISTING WATER MAIN
CB	= CURB CATCH BASIN	∅ _{UP/L}	= UTILITY POLE W/STREET LIGHT	—>>—>>—	= EXISTING SANITARY SEWER
.E	= ELECTRIC LOCATION	∅ _{CO}	= SANITARY CLEANOUT	—>—>—	= EXISTING STORM SEWER
∅ _{EMH}	= ELECTRIC MANHOLE	∅ _{SMH}	= SANITARY MANHOLE	— · — · — · — · —	= OVERHEAD UTILITIES
∅ ^E	= ELECTRIC METER	∅ _{SIR}	= SET IRON ROD	— G —	= GAS MAIN/LINE
∅	= FIRE HYDRANT	∅	= SIGN POST	— T —	= BURIED TELEPHONE
∅ _{FL}	= FLAG POLE	· xx	= SOIL BORING LOCATION	— FOC —	= BURIED FIBER OPTIC
● _{FMON}	= FOUND MONUMENT	∅ _{STMH}	= STORM MANHOLE	— E —	= ELECTRICAL
● _{FIP}	= FOUND IRON PIPE	+	= STREET SIGN	— · — · — · — · —	= BURIED ELECTRICAL
● _{FIR}	= FOUND IRON ROD	.T	= TELEPHONE LOCATION	— · — · — · — · —	= CHAINLINK FENCE
● _{FX}	= FOUND X	∅ _{TMH}	= TELEPHONE MANHOLE	— x — x — x —	= WIRE FENCE
.G	= GAS LOCATION	∅ _{TP}	= TELEPHONE PEDESTAL	— — — — —	= WOOD FENCE
∅ _{GMH}	= GAS MANHOLE	∅ _{UP}	= UTILITY POLE	— PW —	= PROP WATERMAIN
∅ ^G	= GAS METER	∅ _{UP/D}	= UTILITY POLE W/DROP	— WS — WS —	= PROP WATERMAIN SERVICE
∅ ^G	= GAS VALVE	∅ _{UP/L}	= UTILITY POLE W/STREET LIGHT	— SS — SS —	= PROP SANITARY SERVICE
∅ _{MH}	= GENERAL MANHOLE	∅ ^{CS}	= WATER CURB STOP	— R/W — — R/W —	= RIGHT OF WAY
□	= GUARD POST	.W	= WATER LOCATION		
·	= GUARDRAIL	∅ _{WMH}	= WATER MANHOLE		
∅-1	= GUY POLE	∅ ^W	= WATER METER		
→	= GUY WIRE	∅ ^W	= WATER VALVE		
∅ _{LP}	= LIGHT POLE				
□	= MAIL BOX				
∅ _{PP}	= POWER POLE				



ABONMARCHÉ
 95 West Main Street
 Benton Harbor, MI 49023
 T 269.927.2295
 F 269.927.1017
 abonmarche.com

Lafayette
 Portage
 South Bend
 Valparaiso

Benton Harbor
 Ft. Wayne
 Goshen
 Grand Haven
 Hobart

Engineering Architecture Land Surveying
 COPYRIGHT 2022 - ABONMARCHÉ CONSULTANTS, INC.

PROJECT:
CITY OF KALAMAZOO
2022 LOCAL STREET
MAPLE STREET RESURFACING

SHEET TITLE:
LEGEND, NOTES, AND DETAILS

SHEET NO.:

DRAWN BY:
JLW

DESIGNED BY:
DAD

PM REVIEW:
DAD

QA/QC REVIEW:

DATE:
JANUARY 2023

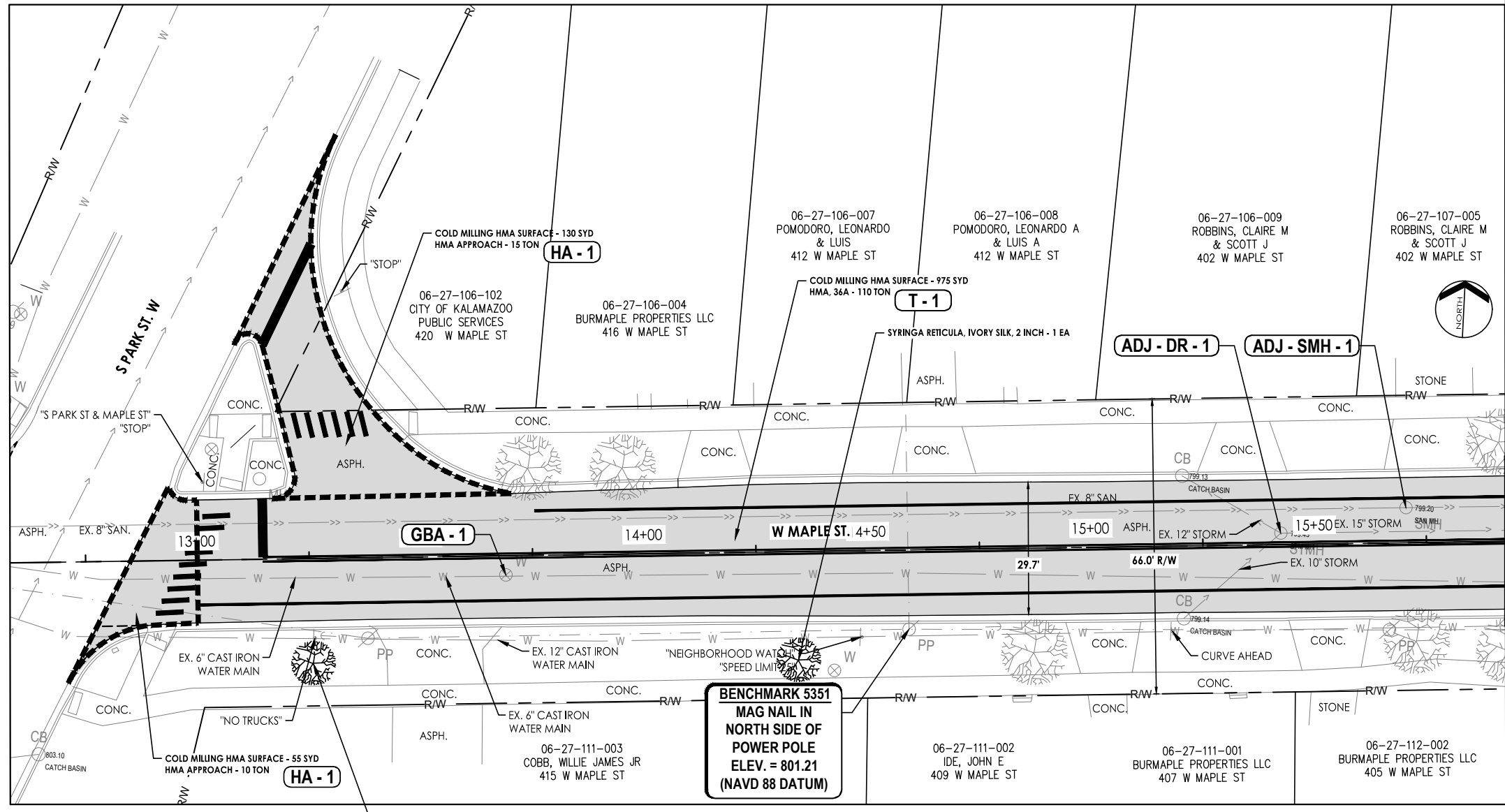
SCALE:
 HORZ: **NTS**
 VERT: **N/A**

ACI JOB #
22-0208

NO.	REVISION DESCRIPTION:	BY:	DATE:
-----	-----------------------	-----	-------

O:\Projects\2022\22-0208 COK-Maple Street Resurfacing\CAD_Civil\Plan Sheets\22-0208 01 Notes and Details.dwg, DTL-01, 2/1/2023 5:27:15 PM, mmeguire, 1:1

O:\Projects\2022\22-0208 COK-Maple Street Resurfacing\CAD_Civil\Plan Sheets\22-0208 03 Construction Plan.dwg, P-01, 2/1/2023 5:27:15 PM, mmequire, 1:1



Quantities	Item Description	Unit	Sht 4	Quantity
	Dr Structure Cover, Adj, Case 1, Modified	Ea		1
	Cold Milling HMA Surface	Syd		1150
	HMA, 36A	Ton		110
	HMA Approach	Ton		25
	Syringa reticulata 'Ivory Silk', 2 inch	Ea		1
	Zelkova serrata 'JFS-KWI' TM, 2 inch	Ea		1
	Gate Box, Reconst, Case 1	Ea		1
	Sanitary Structure Cover, Adj, Case 1, Modified	Ea		1

LEGEND

	COLD MILLING AND RESURFACING		HMA APPROACH
	HAND PATCHING		SIDEWALK RAMP, CONC, 6 INCH
	DRIVEWAY, NONREINF CONC, 6 INCH		SIDEWALK, CONC, 4 INCH
	AGGREGATE SURFACE, CSE		SIDEWALK, CONC, 6 INCH
	SLOPE RESTORATION, TYPE E, MODIFIED		DETECTABLE WARNING SURFACE, CAST IRON
	STRUCTURE COVER, ADJ, CASE --, MODIFIED		GATE BOX, RECONST CASE --
	TEMPORARY LOWER, COVER TYPE		HMA APPROACH (MIX DESIGNATION)

ABONMARCHÉ

95 West Main Street
Benton Harbor, MI, 49023
T 269.927.2295
F 269.927.1017
abonmarche.com

Lafayette
Portage
South Bend
Valparaiso

Benton Harbor
Fl. Wayne
Goshen
Grand Haven
Hobart

Engineering - Architecture - Land Surveying

CITY OF KALAMAZOO
2022 LOCAL STREET
MAPLE STREET RESURFACING

MAPLE STREET PLAN
STA. 10+30 (P.O.B.) TO
STA. 15+85

SHEET TITLE: MAPLE STREET PLAN STA. 10+30 (P.O.B.) TO STA. 15+85

DRAWN BY: JLW

DESIGNED BY: DAD

PM REVIEW: DAD

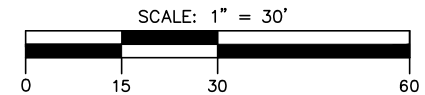
QA/QC REVIEW:

DATE: JANUARY 2023

SCALE: HORZ: 1" = 30' VERT: N/A

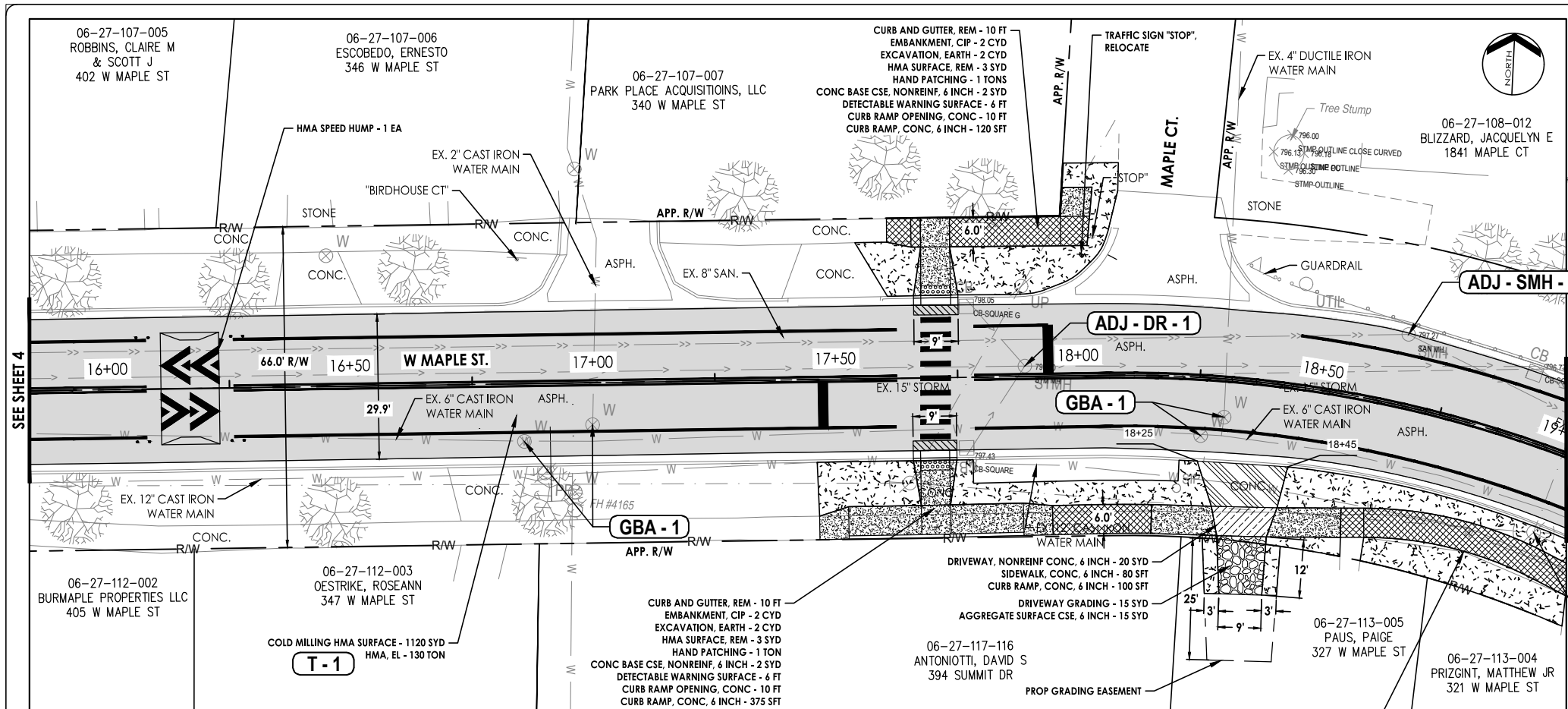
ACI JOB #: 22-0208

SHEET NO. 4 of 12



NO.	REVISION DESCRIPTION:	BY:	DATE:

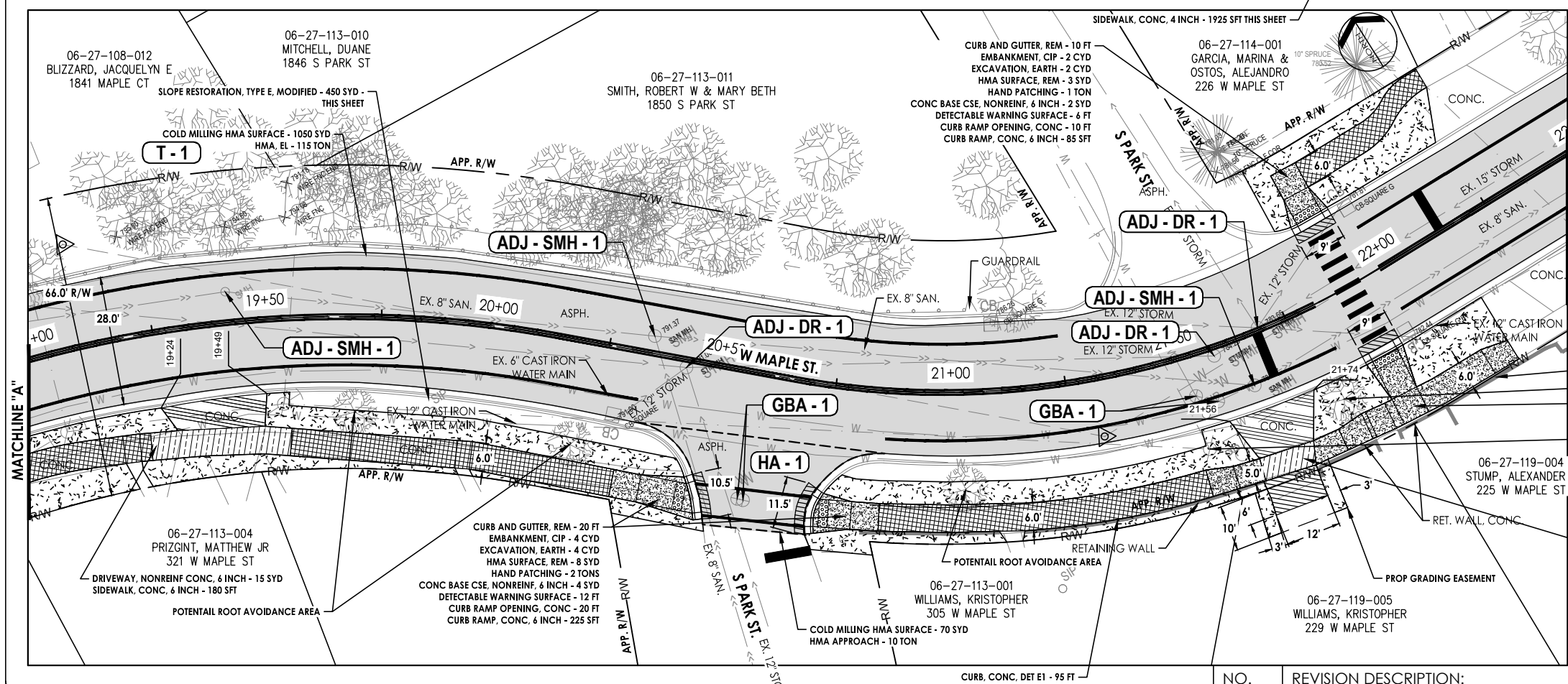
C:\Projects\2022-0208 COK-Maple Street Resurfacing\CAD_Civil\Plan Sheets\22-0208 03 Construction Plan.dwg, P-02, 2/1/2023 5:27:17 PM, mmequire, 1:1



Item Description	Unit	Sht 5 Quantity
Curb and Gutter, Rem	Ft	60
Embankment, CIP	Cyd	10
Excavation, Earth	Cyd	10
Driveway, Grading	Syd	25
Aggregate Surface Cse, 6 inch	Syd	15
Dr Structure, Temp Lowering	Ea	4
Dr Structure Cover, Adj, Case 1, Modified	Ea	4
Cold Milling HMA Surface	Syd	2240
HMA Surface, Rem	Syd	15
Hand Patching	Ton	11
HMA, 36A	Ton	245
HMA Approach	Ton	10
Conc Base Cse, Nonreinf, 6 inch	Syd	12
Driveway, Nonreinf Conc, 6 inch	Syd	55
Curb, Conc, Det E1	Ft	95
Detectable Warning Surface	Ft	36
Curb Ramp Opening, Conc	Ft	60
Sidewalk, Conc, 4 inch	Sft	1925
Sidewalk, Conc, 6 inch	Sft	330
Curb Ramp, Conc, 6 inch	Sft	1330
Sign, Type III, Rem	Ea	1
Slope Restoration, Type E, Modified	Syd	485
Gate Box, Reconst, Case 1	Ea	8
Sanitary Structure Cover, Adj, Case 1, Modified	Ea	4
HMA Speed Hump	Ea	1

BENCHMARK 1082
RR SPIKE IN
NORTH SIDE OF
GUY POLE
ELEV. = 797.45
(NAVD 88 DATUM)

NOTE:
1. AREAS MARKED FOR POTENTIAL ROOT AVOIDANCE SHOULD FOLLOW THE CITY OF KALAMAZOO STANDARD DETAIL FOR SIDEWALK ROOT AVOIDANCE AS DIRECTED BY THE ENGINEER. IF DIRECTED BY THE ENGINEER PAYMENT FOR ADDITIONAL WORK ASSOCIATED WITH ROOT AVOIDANCE IS INCLUDED IN THE MISCELLANEOUS QUANTITIES ON SHEET 2.



ABONMARCHÉ

95 West Main Street
Benton Harbor, MI, 49023
T 269.927.2295
F 269.927.1017
abonmarche.com

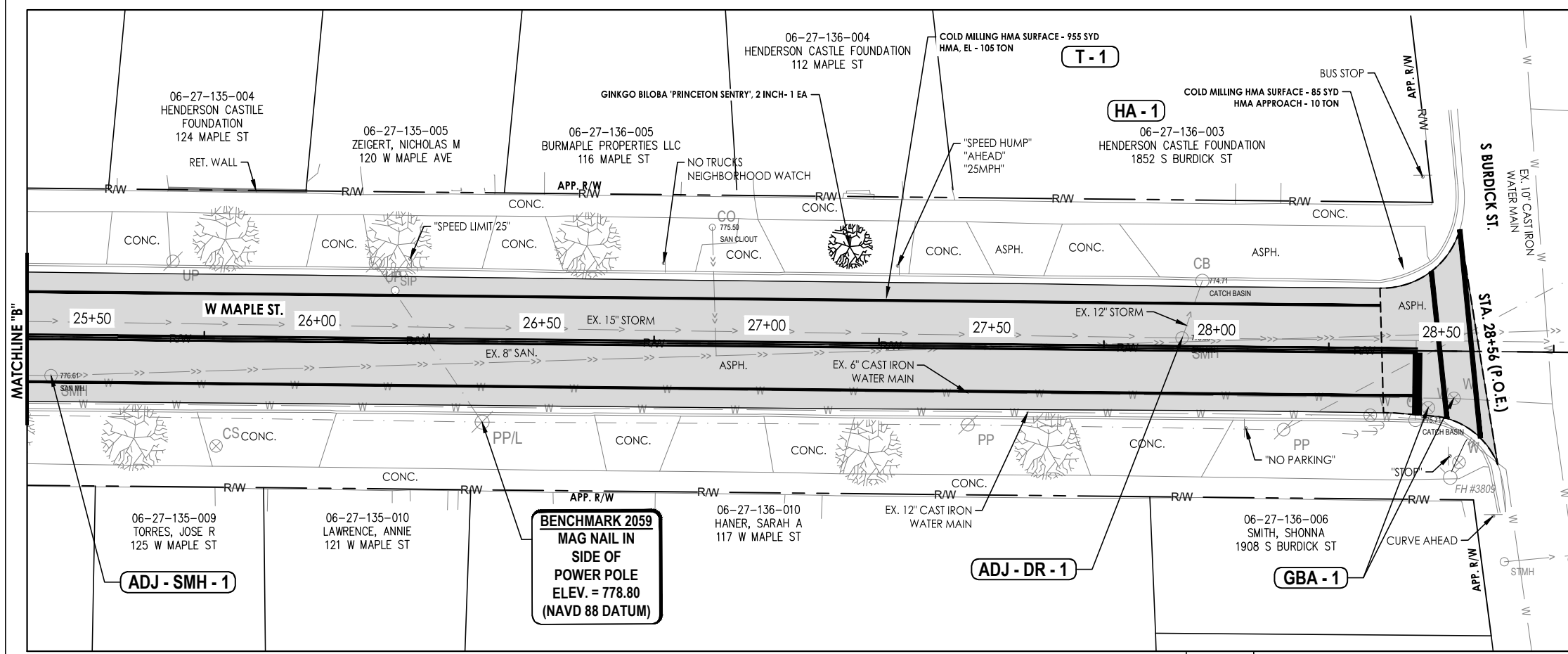
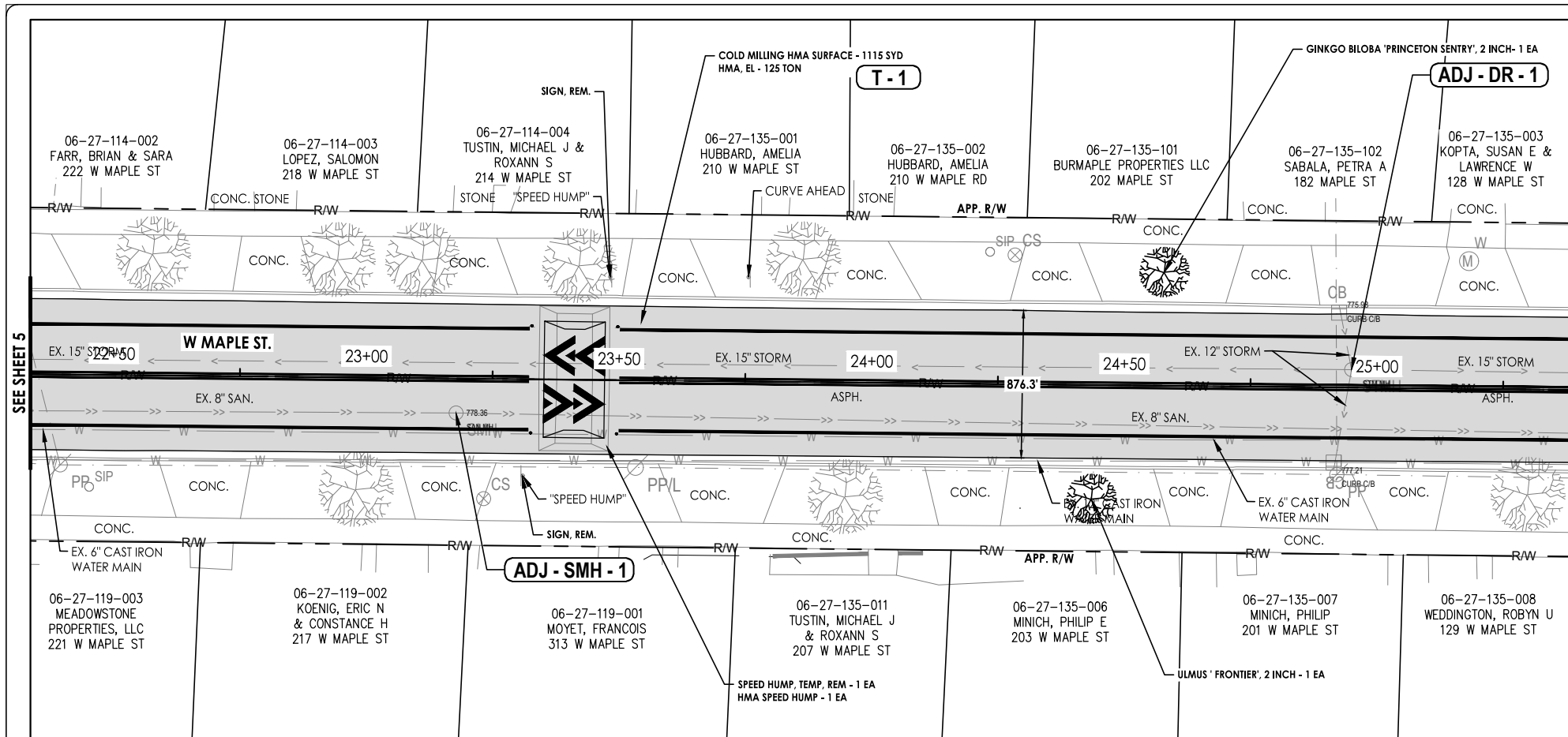
Engineering - Architecture - Land Surveying

CITY OF KALAMAZOO
2022 LOCAL STREET
MAPLE STREET RESURFACING

MAPLE STREET PLAN
STA. 15+85 TO STA. 22+25

DRAWN BY: JLW
DESIGNED BY: DAD
PM REVIEW: DAD
QA/QC REVIEW:
DATE: JANUARY 2023
SCALE: HORIZ: 1" = 30'
VERT: N/A
ACI JOB # 22-0208
SHEET NO. 5 of 12

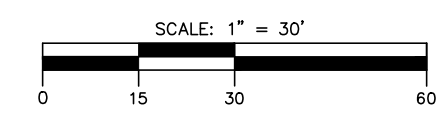
O:\Projects\2022\22-0208 COK-Maple Street Resurfacing\CAD_Civil\Plan Sheets\22-0208 03 Construction Plan.dwg, P-03, 2/1/2023 5:27:21 PM, mmequire, 1:1



Quantities	Unit	Sht 6
Speed Hump, Temp, Rem	Ea	1
Dr Structure, Temp Lowering	Ea	2
Dr Structure Cover, Adj, Case 1, Modified	Ea	2
Cold Milling HMA Surface	Syd	2155
HMA, 36A	Ton	230
HMA Approach	Ton	10
Sign, Type III, Rem	Ea	2
Ginkgo biloba 'Princeton Sentry', 2 inch	Ea	2
Ulmus 'Frontier', 2 inch	Ea	1
Gate Box, Reconst, Case 1	Ea	2
Sanitary Structure Cover, Adj, Case 1, Modified	Ea	2
HMA Speed Hump	Ea	1

LEGEND

- COLD MILLING AND RESURFACING
- HAND PATCHING
- DRIVEWAY, NONREINF CONC, 6 INCH
- AGGREGATE SURFACE, CSE
- SLOPE RESTORATION, TYPE E, MODIFIED
- ADJ - - - STRUCTURE COVER, ADJ, CASE - , MODIFIED
- TL - - - TEMPORARY LOWER, COVER TYPE
- HMA APPROACH
- SIDEWALK RAMP, CONC, 6 INCH
- SIDEWALK, CONC, 4 INCH
- SIDEWALK, CONC, 6 INCH
- DETECTABLE WARNING SURFACE, CAST IRON
- GBA - - - GATE BOX, RECONST, CASE -
- HA - 1 HMA APPROACH (MIX DESIGNATION)



ABONMARCHÉ
 95 West Main Street
 Benton Harbor, MI, 49023
 T 269.927.2295
 F 269.927.1017
 abonmarche.com

Lafayette
 Portage
 South Bend
 Valparaiso

Benton Harbor
 Ft. Wayne
 Goshen
 Grand Haven
 Hobart

Engineering - Architecture - Land Surveying
 COPYRIGHT 2022 - ABONMARCHÉ CONSULTANTS, INC.

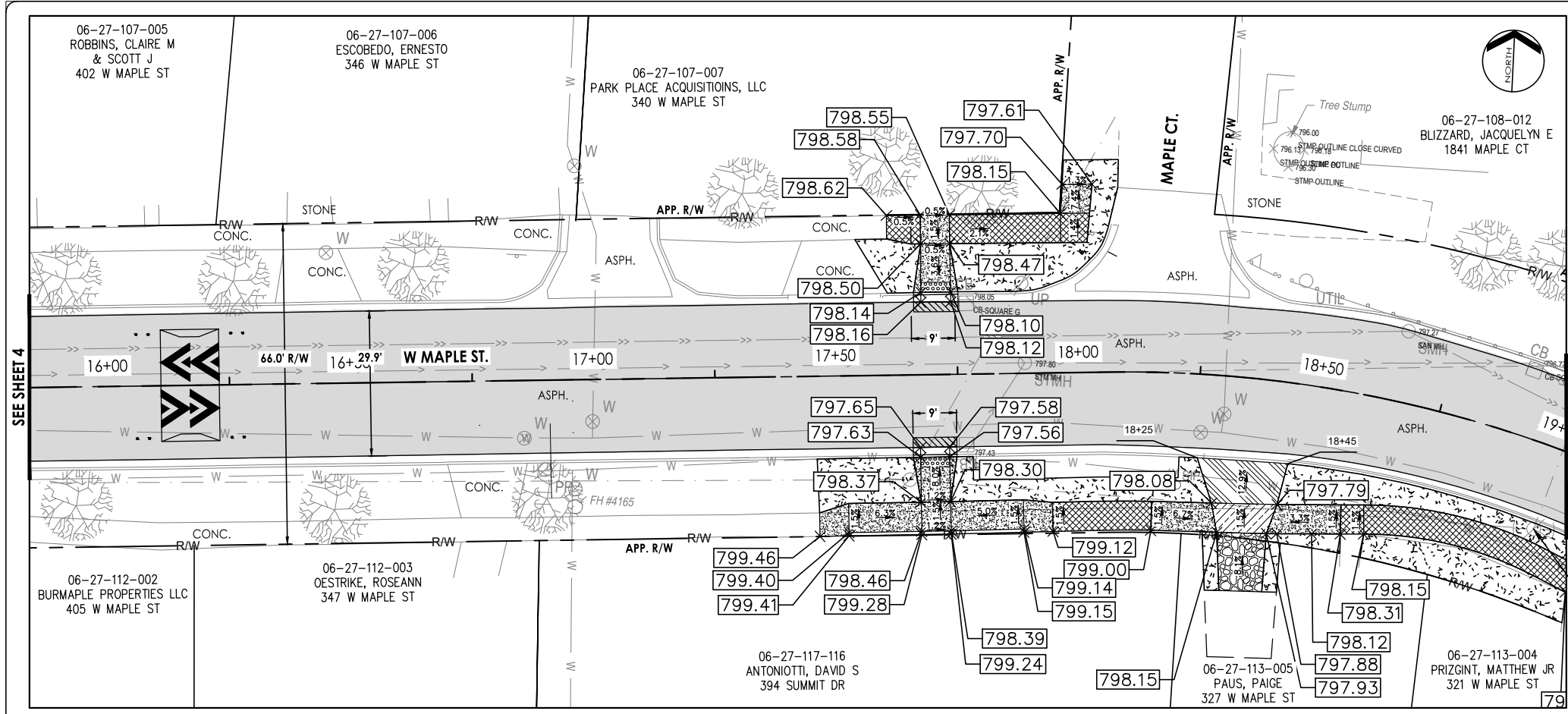
CITY OF KALAMAZOO
2022 LOCAL STREET
MAPLE STREET RESURFACING

PROJECT: **MAPLE STREET PLAN**
STA. 22+25 TO
STA. 28+56 (P.O.E.)

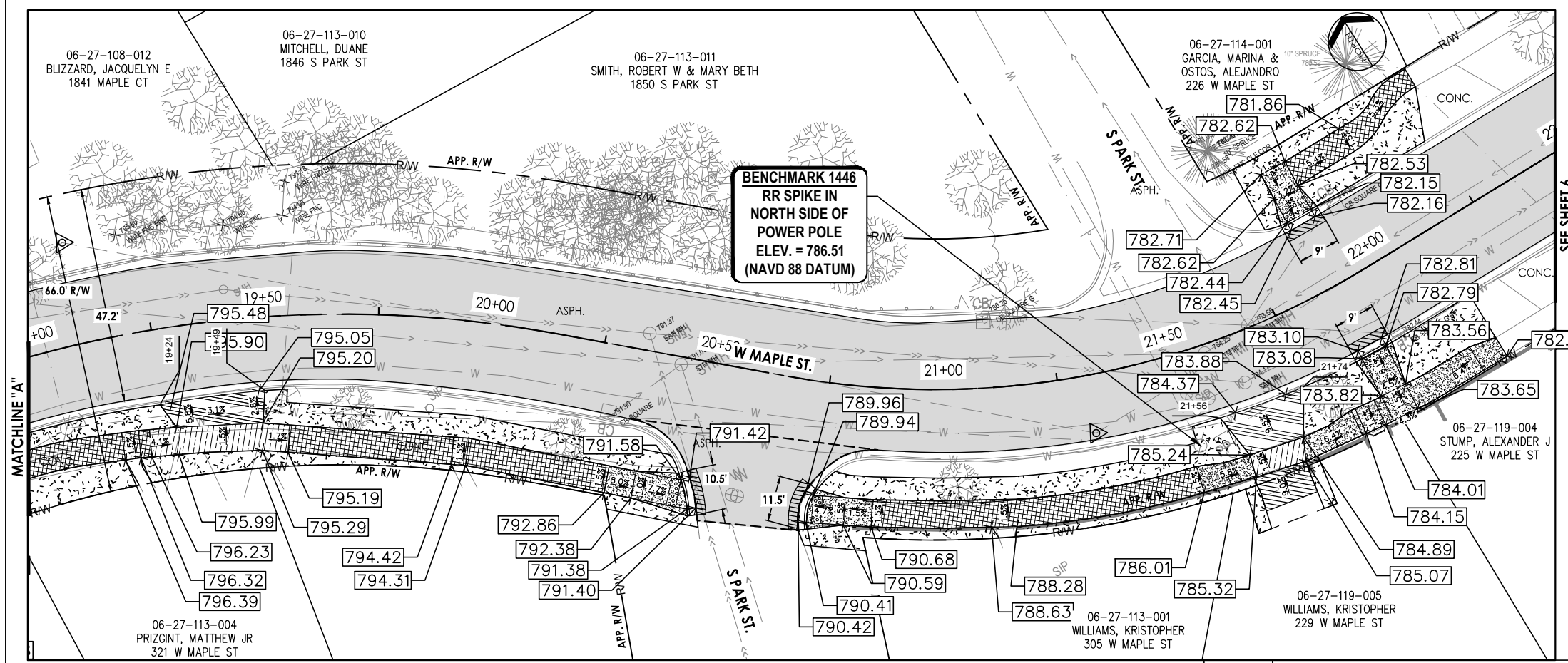
SHEET TITLE: **MAPLE STREET PLAN**
 DRAWN BY: **JLW**
 DESIGNED BY: **DAD**
 PM REVIEW: **DAD**
 QA/QC REVIEW:
 DATE: **JANUARY 2023**
 SCALE: **HORZ: 1" = 30'**
VERT: N/A
 ACI JOB # **22-0208**

NO.	REVISION DESCRIPTION:	BY:	DATE:

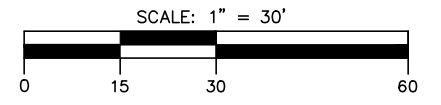
O:\Projects\2022\22-0208 COOK-Maple Street Resurfacing\CAD_Civil\Plan Sheets\22-0208 03 Construction Plan.dwg, G-01, 2/1/2023 5:27:24 PM, rmmeguire, 1:1



BENCHMARK 1082
RR SPIKE IN
NORTH SIDE OF
GUY POLE
ELEV. = 797.45
(NAVD 88 DATUM)



BENCHMARK 1446
RR SPIKE IN
NORTH SIDE OF
POWER POLE
ELEV. = 786.51
(NAVD 88 DATUM)



ABONMARCHÉ

95 West Main Street
Benton Harbor, MI, 49023
T 269.927.2295
F 269.927.1017
abonmarche.com

Benton Harbor
Lafayette
Portage
South Bend
Valparaiso
Hobart

Engineering - Architecture - Land Surveying
COPYRIGHT 2022 - ABONMARCHÉ CONSULTANTS, INC.

PROJECT:

CITY OF KALAMAZOO
2022 LOCAL STREET
MAPLE STREET RESURFACING

SHEET TITLE:

GRADING PLAN

DRAWN BY: **DRAWNBY**

DESIGNED BY: **DAD**

PM REVIEW: **DAD**

QA/QC REVIEW:

DATE: **JANUARY 2023**

SCALE: **HORIZ: 1" = 30'**
VERT: VERT

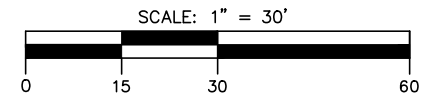
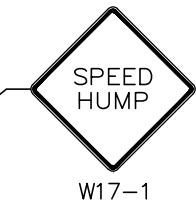
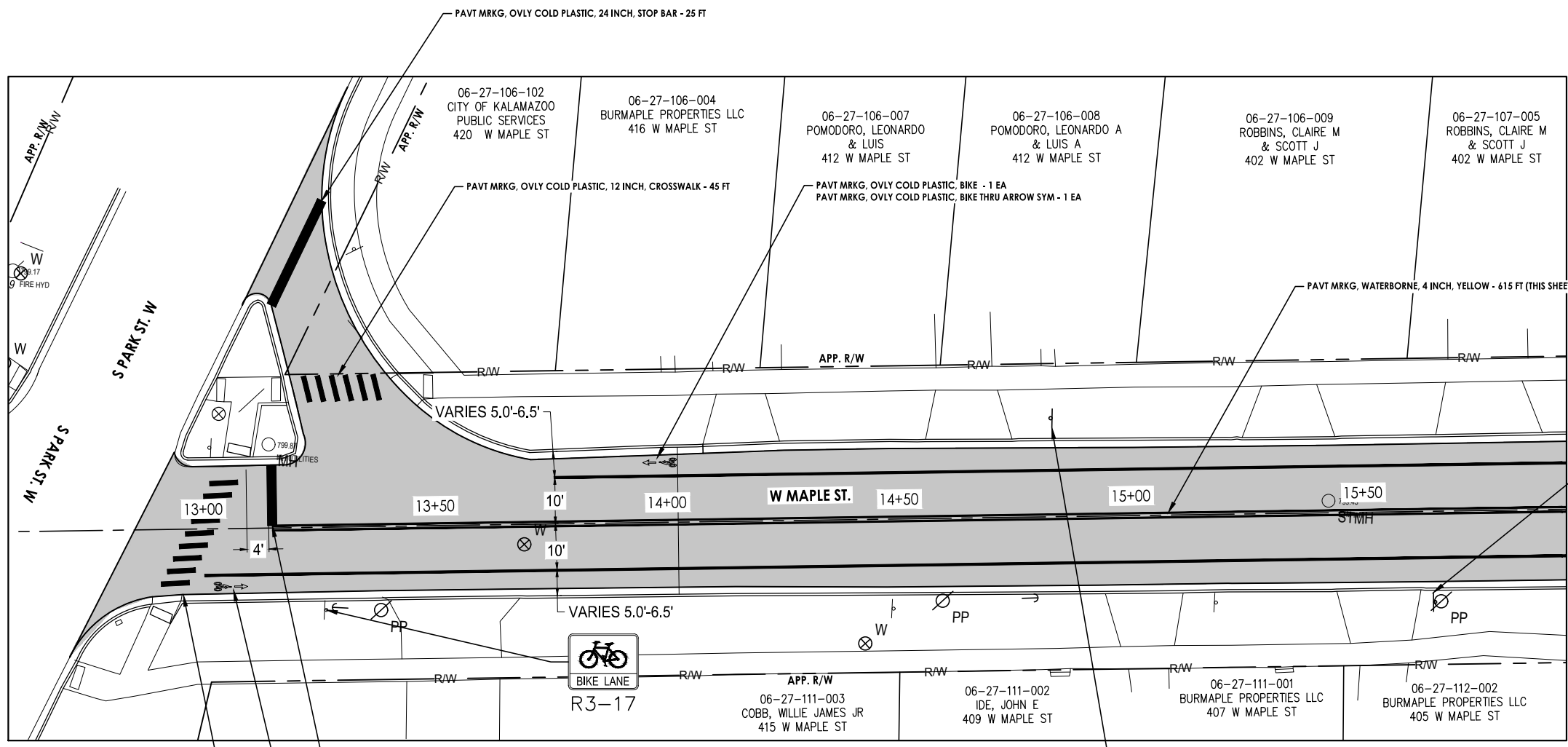
ACI JOB #: **22-0208**

SHEET NO.: **7 of 12**

NO.	REVISION DESCRIPTION:	BY:	DATE:

Quantities Item Description	Unit	Sht 8 Quantity
Post, Steel, 3 lb	Ft	42
Sign, Type III B	Sft	16
Pavt Mrkg, Ovly Cold Plastic, 12 inch, Crosswalk	Ft	105
Pavt Mrkg, Ovly Cold Plastic, 24 inch, Stop Bar	Ft	40
Pavt Mrkg, Ovly Cold Plastic, Bike	Ea	4
Pavt Mrkg, Waterborne, 4 inch, Yellow	Ft	615
Pavt Mrkg, Waterborne, 6 inch, White	Ft	540
Pavt Mrkg, Ovly Cold Plastic, Bike Thru Arrow Sym	Ea	4

NOTE:
1. FURNISH ALL PEDESTRIAN AND BICYCLE SIGNAGE WITH BLACK LEGEND ON FLUORESCENT YELLOW-GREEN BACKGROUND.



ABONMARCHÉ
 Lafayette
 Portage
 South Bend
 Valparaiso

Benton Harbor
 Ft. Wayne
 Goshen
 Grand Haven
 Hobart

95 West Main Street
 Benton Harbor, MI, 49023
 T 269.927.2295
 F 269.927.1017
 abonmarche.com

Engineering - Architecture - Land Surveying
 COPYRIGHT 2022 - ABONMARCHÉ CONSULTANTS, INC.

PROJECT:
**CITY OF KALAMAZOO
 2022 LOCAL STREET
 MAPLE STREET RESURFACING**

SHEET TITLE:
**PAVEMENT MARKING AND
 PERMANENT SIGNAGE
 PLAN - 1**

DRAWN BY:
JLW

DESIGNED BY:
DAD

PM REVIEW:
DAD

QA/QC REVIEW:

DATE:
JANUARY 2023

SCALE:
 HORZ: 1" = 30'
 VERT: N/A

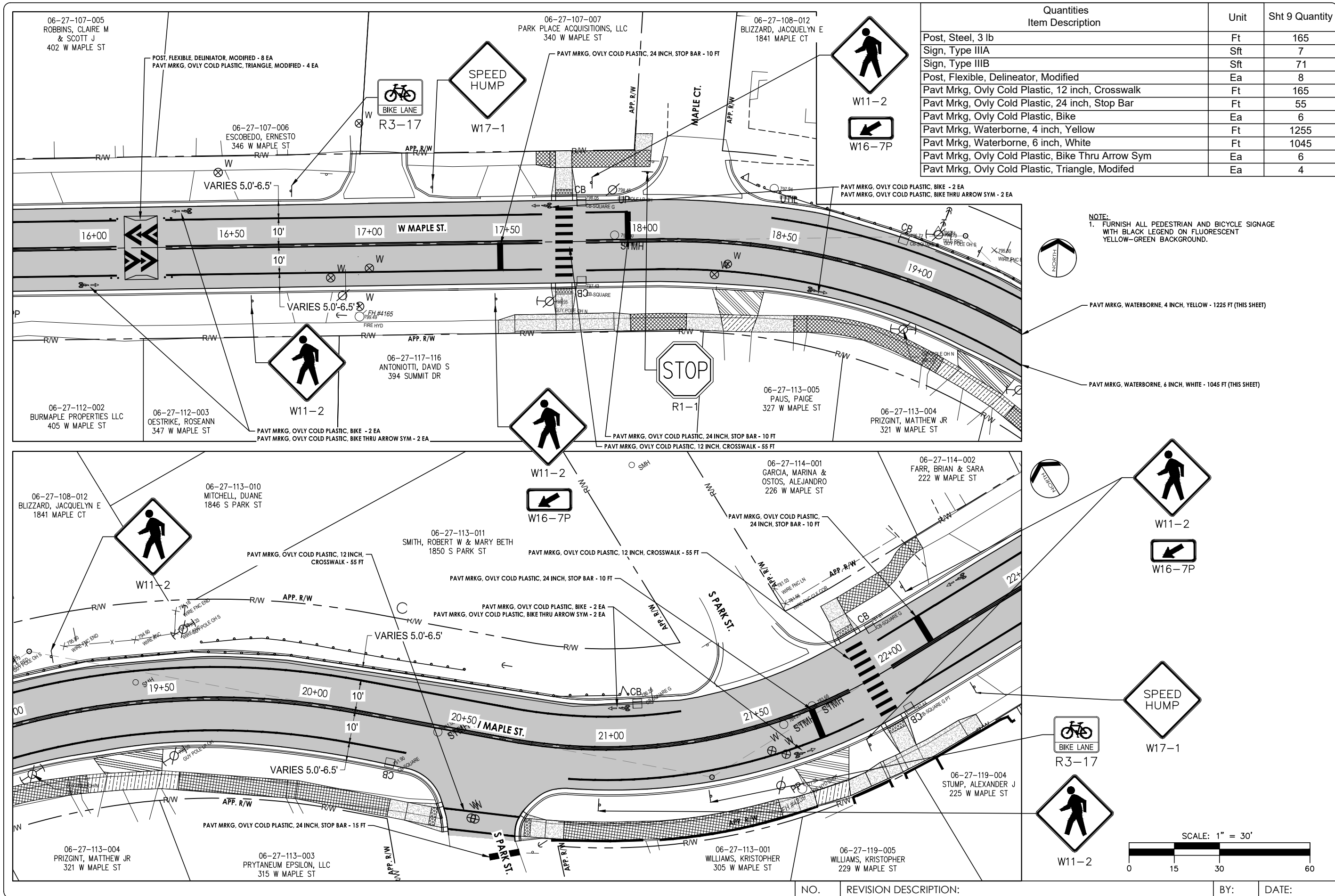
ACI JOB #
22-0208

SHEET NO.

NO.	REVISION DESCRIPTION:	BY:	DATE:

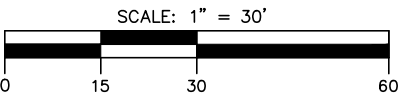
O:\Projects\2022\22-0208 COK-Maple Street Resurfacing\CAD_Civil\Plan Sheets\22-0208 04 Pavement Striping and Sign Plan.dwg, PM-01, 2/1/2023 5:27:28 PM, mmcguire, 1:1

O:\Projects\2022\22-0208 COK-Maple Street Resurfacing\CAD_Civil\Plan Sheets\22-0208 04 Pavement Striping and Sign Plan.dwg, PM-02, 2/1/2023 5:27:29 PM, mmmgaur, 1:1



Quantities	Unit	Sht 9 Quantity
Post, Steel, 3 lb	Ft	165
Sign, Type IIIA	Sft	7
Sign, Type IIIB	Sft	71
Post, Flexible, Delineator, Modified	Ea	8
Pavt Mrkg, Ovly Cold Plastic, 12 inch, Crosswalk	Ft	165
Pavt Mrkg, Ovly Cold Plastic, 24 inch, Stop Bar	Ft	55
Pavt Mrkg, Ovly Cold Plastic, Bike	Ea	6
Pavt Mrkg, Waterborne, 4 inch, Yellow	Ft	1255
Pavt Mrkg, Waterborne, 6 inch, White	Ft	1045
Pavt Mrkg, Ovly Cold Plastic, Bike Thru Arrow Sym	Ea	6
Pavt Mrkg, Ovly Cold Plastic, Triangle, Modified	Ea	4

NOTE:
1. FURNISH ALL PEDESTRIAN AND BICYCLE SIGNAGE WITH BLACK LEGEND ON FLUORESCENT YELLOW-GREEN BACKGROUND.



ABONMARCHÉ
 95 West Main Street
 Benton Harbor, MI, 49023
 T 269.927.2295
 F 269.927.1017
 abonmarche.com

Lafayette
 Portage
 South Bend
 Valparaiso
 Benton Harbor
 Ft. Wayne
 Goshen
 Grand Haven
 Hobart

Engineering - Architecture - Land Surveying
 COPYRIGHT 2022 - ABONMARCHÉ CONSULTANTS, INC.

PROJECT:
CITY OF KALAMAZOO
2022 LOCAL STREET
MAPLE STREET RESURFACING

SHEET TITLE:
PAVEMENT MARKING AND
PERMANENT SIGNAGE
PLAN - 2

DRAWN BY:
JLW

DESIGNED BY:
DAD

PM REVIEW:
DAD

QA/QC REVIEW:

DATE:
JANUARY 2023

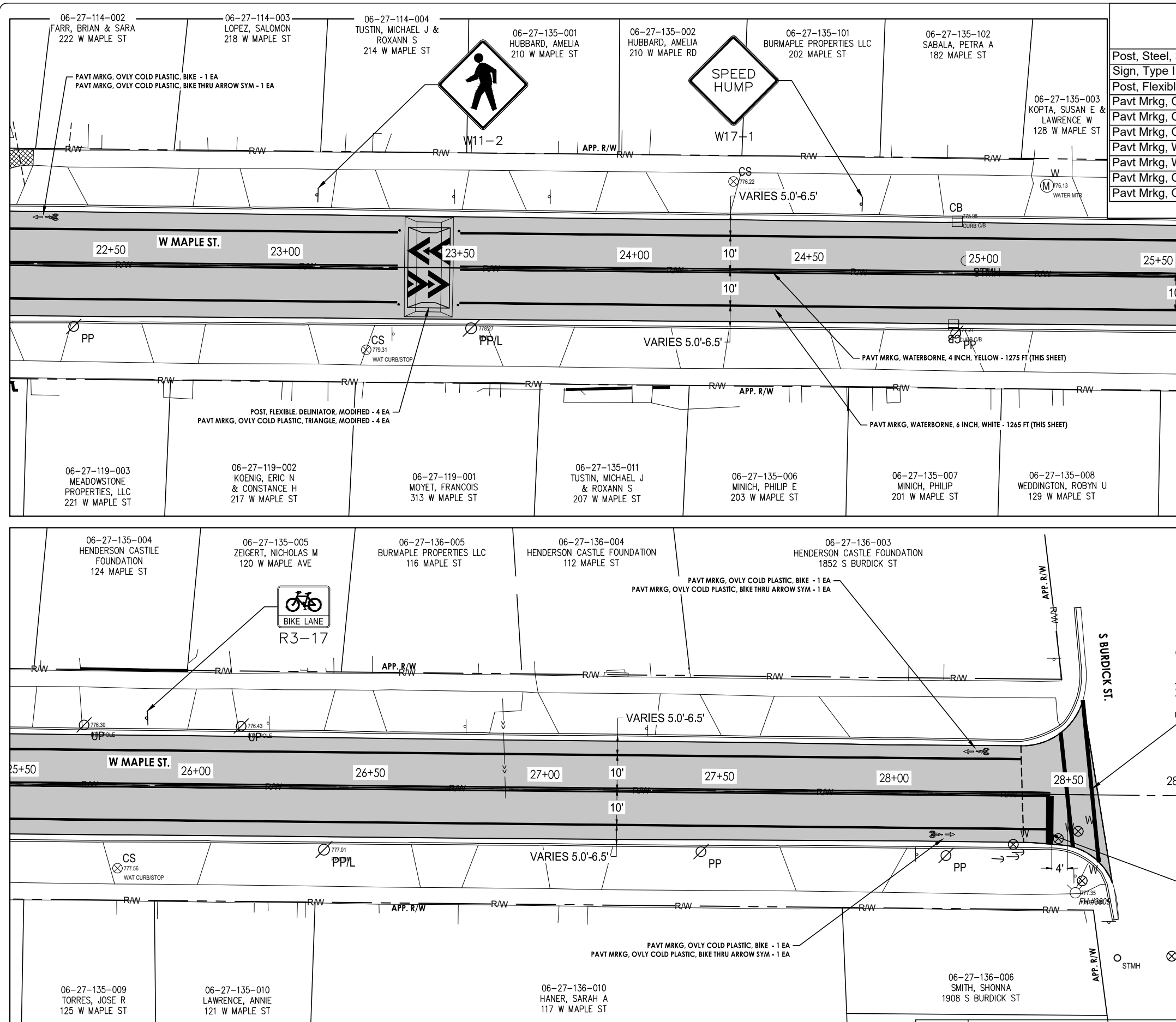
SCALE:
 HORZ: 1" = 30'
 VERT: N/A

ACI JOB #
22-0208

SHEET NO.
9 of 12

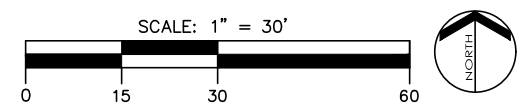
NO.	REVISION DESCRIPTION:	BY:	DATE:
-----	-----------------------	-----	-------

O:\Projects\2022-02-08 COOK-Maple Street Resurfacing\CAD_Civil\Plan Sheets\22-0208 04 Pavement Striping and Sign Plan.dwg, PM-03, 2/1/2023 5:27:31 PM, mmtgaur, 1:1



Quantities	Item Description	Unit	Sht 10 Quantity
	Post, Steel, 3 lb	Ft	42
	Sign, Type IIIB	Sft	16
	Post, Flexible, Delineator, Modified	Ea	4
	Pavt Mrkg, Ovly Cold Plastic, 12 inch, Crosswalk	Ft	85
	Pavt Mrkg, Ovly Cold Plastic, 24 inch, Stop Bar	Ft	15
	Pavt Mrkg, Ovly Cold Plastic, Bike	Ea	3
	Pavt Mrkg, Waterborne, 4 inch, Yellow	Ft	1275
	Pavt Mrkg, Waterborne, 6 inch, White	Ft	1265
	Pavt Mrkg, Ovly Cold Plastic, Bike Thru Arrow Sym	Ea	3
	Pavt Mrkg, Ovly Cold Plastic, Triangle, Modified	Ea	4

NOTE:
 1. FURNISH ALL PEDESTRIAN AND BICYCLE SIGNAGE WITH BLACK LEGEND ON FLUORESCENT YELLOW-GREEN BACKGROUND.



ABONMARCHÉ
 Lafayette
 Portage
 South Bend
 Valparaiso
 Hobart

95 West Main Street
 Benton Harbor, MI, 49023
 T 269.927.2295
 F 269.927.1017
 abonmarche.com

Engineering - Architecture - Land Surveying
 COPYRIGHT 2022 - ABONMARCHÉ CONSULTANTS, INC.

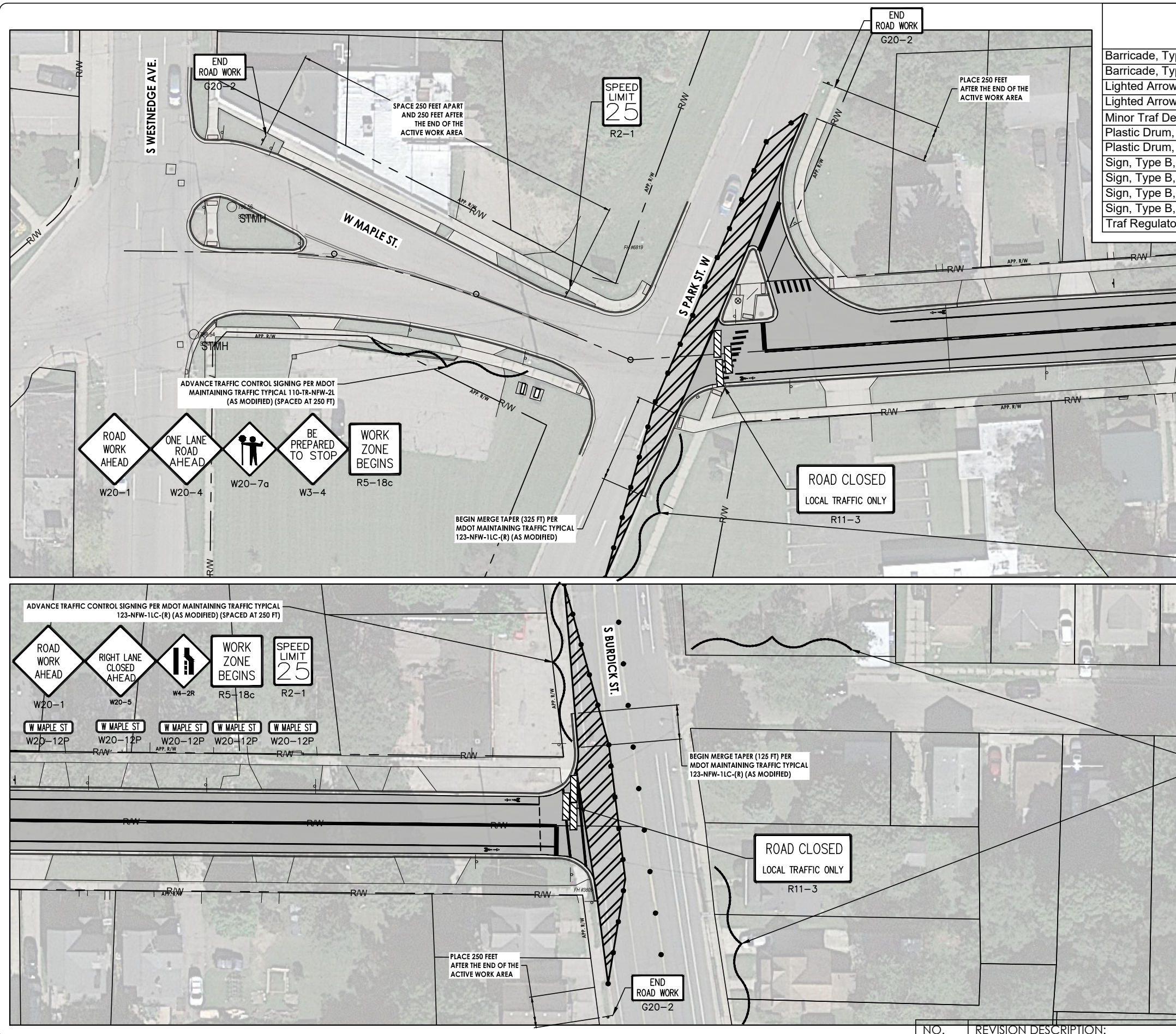
PROJECT:
 CITY OF KALAMAZOO
 2022 LOCAL STREET
 MAPLE STREET RESURFACING

SHEET TITLE:
 PAVEMENT MARKING AND
 PERMANENT SIGNAGE
 PLAN - 3

DRAWN BY: JLW
DESIGNED BY: DAD
PM REVIEW: DAD
QA/QC REVIEW:
DATE: JANUARY 2023
SCALE:
 HORZ: 1" = 30'
 VERT: N/A
ACI JOB #
 22-0208
SHEET NO.

NO.	REVISION DESCRIPTION:	BY:	DATE:
-----	-----------------------	-----	-------

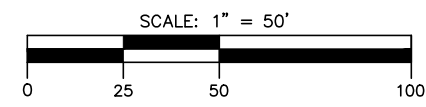
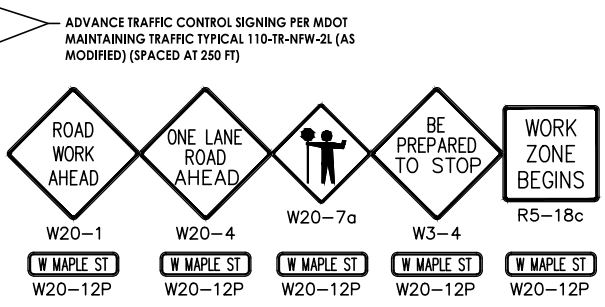
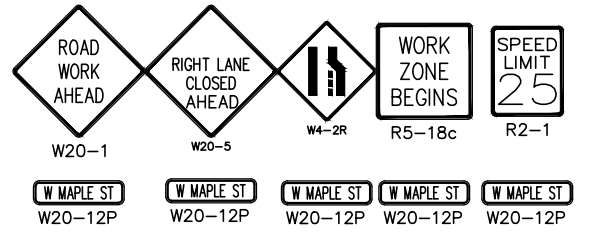
O:\Projects\2022\22-0208 COK-Maple Street Resurfacing\CAD_Civil\Plan Sheets\22-0208 04 Pavement Striping and Sign Plan.dwg, TM-01, 2/1/2023 5:27:33 PM, mmcgaur, 1:1



Item Description	Unit	Sht 11 Quantity
Barricade, Type III, High Intensity, Double Sided, Lighted, Furn	Ea	6
Barricade, Type III, High Intensity, Double Sided, Lighted, Oper	Ea	6
Lighted Arrow, Type C, Furn	Ea	2
Lighted Arrow, Type C, Oper	Ea	2
Minor Traf Devices	LSUM	1
Plastic Drum, Fluorescent, Furn	Ea	75
Plastic Drum, Fluorescent, Oper	Ea	75
Sign, Type B, Temp, Prismatic, Furn	Sft	469
Sign, Type B, Temp, Prismatic, Oper	Sft	469
Sign, Type B, Temp, Prismatic, Spec, Furn	Sft	80
Sign, Type B, Temp, Prismatic, Spec, Oper	Sft	80
Traf Regulator Control	LSUM	1

NOTE:
 1. FOR CURB AND GUTTER AND SIDEWALK WORK ON MAPLE ST. RELOCATE ONE EAST BOUND AND ONE WEST BOUND TRAFFIC REGULATOR SIGN PROGRESSION.
 2. TWO WAY TRAFFIC SHALL BE MAINTAINED ON MAPLE STREET BETWEEN PARK STREET AND BURDICK STREET AT ALL TIMES, USING TRAFFIC REGULATORS AS NEEDED.

- LEGEND**
- BARRICADE, TYPE III, FLUORESCENT
 - SIGN, TYPE B, TEMP
 - PLASTIC DRUM, FLUORESCENT



ABONMARCHÉ
 Lafayette
 Portage
 South Bend
 Valparaiso

Benton Harbor
 Ft. Wayne
 Goshen
 Grand Haven
 Hobart

95 West Main Street
 Benton Harbor, MI, 49023
 T 269.927.2295
 F 269.927.1017
 abonmarche.com

Engineering - Architecture - Land Surveying
 COPYRIGHT 2022 - ABONMARCHÉ CONSULTANTS, INC.

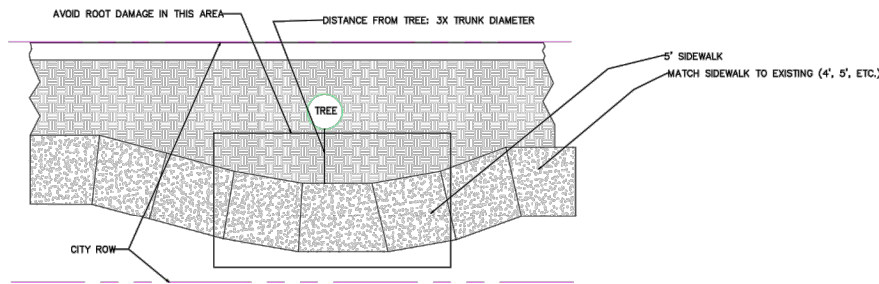
CITY OF KALAMAZOO
2022 LOCAL STREET
MAPLE STREET RESURFACING

MAINTENANCE OF TRAFFIC PLAN

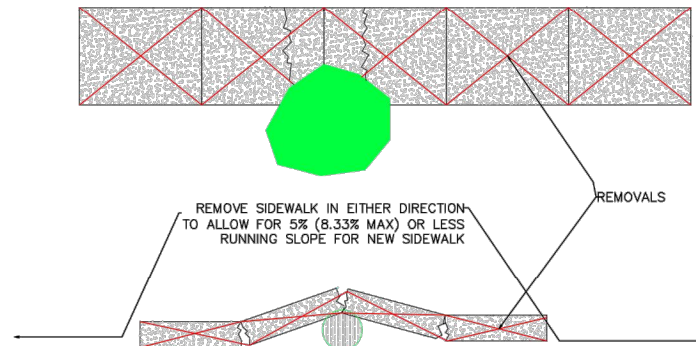
PROJECT TITLE: MAINTENANCE OF TRAFFIC PLAN
 SHEET TITLE: MAPLE STREET RESURFACING
 DRAWN BY: JLW
 DESIGNED BY: DAD
 PM REVIEW: DAD
 QA/QC REVIEW:
 DATE: JANUARY 2023
 SCALE: HORZ: 1" = 50', VERT: N/A
 ACI JOB #: 22-0208
 SHEET NO.:

NO.	REVISION DESCRIPTION:	BY:	DATE:
-----	-----------------------	-----	-------

STANDARD DETAIL – SIDEWALK
ROOT AVOIDANCE – MEANDERING SIDEWALK



ROOT CRACKING OF SIDEWALK



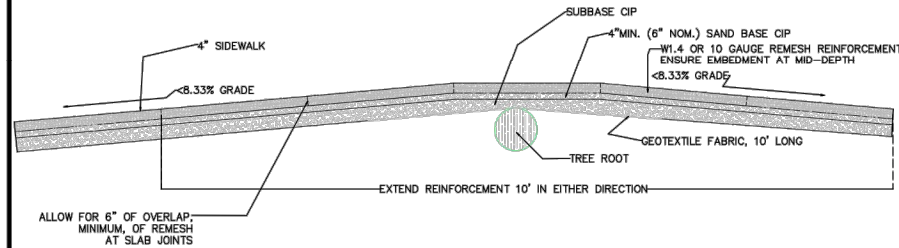
DEPARTMENT OF PUBLIC SERVICES - Engineering
STANDARD DETAILS
CITY OF KALAMAZOO

DESIGNED	SCALE	REVISIONS
BY: CHW	VERTICAL: NOT TO SCALE	1. 12.18.20 - App base depth & option of 2C base
DRAWN: CHW	HORIZONTAL: NOT TO SCALE	
DATE: 11/23/2020		

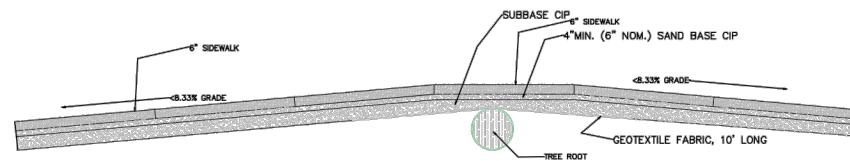
GENERAL NOTES:

- MDT STANDARD PLANS R-28-J, R-29-I, R-30-G, AND R-44-F SHALL BE FOLLOWED IN CONJUNCTION WITH THESE STANDARD PLANS
- ALL SAW CUTTING SHALL BE DONE PERPENDICULAR AND PARALLEL TO THE DIRECTION OF TRAVEL
- SAW CUTTING SHALL PROVIDE A STRAIGHT, CLEAN, EDGE TO ENHANCE BONDING
- ALL CUTS SHALL BE RECTANGULAR AND NEATLY CUT TO AVOID SPALLING OF PAVEMENT
- ALL ROAD/UTILITY CUTS OF AN AREA GREATER THAN 12"x12" SHALL EXTEND THE FULL WIDTH OF THE TRAVEL LANE
- FOR PAVEMENT WITH LOAD TRANSFER DOWEL RODS OR REINFORCEMENT: NEW LOAD TRANSFER DOWELS/REINFORCEMENT SHALL BE PLACED TO MAINTAIN BEARING CAPACITY OF ROADWAY CUTS LESS THAN 12" SHALL BE PATCHED WITH PCC. IF GREATER THAN 12", ENSURE CUT IS IN ACCORDANCE WITH STANDARD DETAILS AND MATCHING EXISTING ROADWAY
- BUMPS/CUTS/MILLED AREAS WITH EDGE GREATER THAN 2" DEEP/HIGH MUST BE WEDGED WITH HMA BEFORE OPEN TO TRAFFIC. SEE STANDARD DETAIL.
- MEANDERING SIDEWALK SHALL ONLY BE PLACED IN THE CITY'S ROW OR WHERE AN EASEMENT IS ESTABLISHED
- NEW SIDEWALK CONSTRUCTION SHALL MEET OR EXCEED CURRENT ADA AND ACCESSIBILITY STANDARDS
- REPLACED SIDEWALK SHALL, TO THE EXTENT PRACTICABLE, MEET OR EXCEED ADA AND ACCESSIBILITY STANDARDS
- SIDEWALK, DRIVEWAY OPENINGS & APPROACHES SHALL CONFORM TO MDT STANDARD PLAN DETAILS R-28-J AND R-29-I
- MARSHALL MIXES 13A (LEVELING) & 36A (TOP) MAY BE SUBSTITUTED FOR SUPERPAVE HMA MIX DESIGNS AS DEEMED APPROPRIATE BY THE ENGINEER
- ASPHALT BINDER SHALL BE INCLUDED IN THE PAY ITEM FOR HMA
- MDT PCC P1 MIX DESIGN SHALL BE USED FOR ALL CONCRETE UNLESS OTHERWISE STATED OR DIRECTED BY THE ENGINEER
- OPENING TO TRAFFIC STRENGTHS (2012 STANDARD SPECIFICATIONS FOR CONSTRUCTION, TABLE 603-1):
 - <72 HOURS, GRADE P-NC, 300 psi
 - 72 HOURS +, GRADE P1, P1M, 550 psi

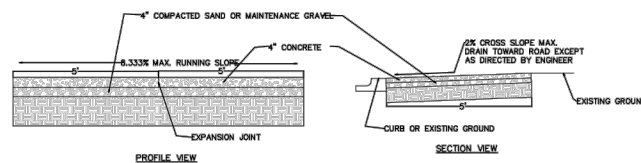
STANDARD DETAIL – SIDEWALK
ROOT AVOIDANCE



STANDARD DETAIL – SIDEWALK
ROOT AVOIDANCE – W/O REINFORCEMENT
(USE ONLY AS DIRECTED BY ENGINEER)



TYPICAL 4" SIDEWALK DETAIL



95 West Main Street
Benton Harbor, MI, 49023
T 269.927.2295
F 269.927.1017
abonmarche.com

Lafayette
Portage
South Bend
Valparaiso

Benton Harbor
Fl. Wayne
Goshen
Grand Haven
Hobart

Engineering - Architecture - Land Surveying
COPYRIGHT 2022 - ABONMARCHÉ CONSULTANTS, INC.

CITY OF KALAMAZOO
2022 LOCAL STREET
MAPLE STREET RESURFACING

CITY OF KALAMAZOO
NOTES AND DETAILS

PROJECT TITLE:
SHEET TITLE:
DRAWN BY: MCM
DESIGNED BY: DAD
PM REVIEW: DAD
QA/QC REVIEW:
DATE: JANUARY 2023
SCALE:
HORZ: N/A
VERT: N/A
ACI JOB #: 22-0208
SHEET NO.:

NO.	REVISION DESCRIPTION:	BY:	DATE:

O:\Projects\2022\22-0208 COK-Maple Street Resurfacing\CAD_Civil\Plan Sheets\22-0208 01 Notes and Details.dwg, CoK DET, 2/1/2023 5:27:37 PM, nmeguire, 1:1