

INDEX OF SHEETS

- 1 TITLE SHEET
- 2 GENERAL PLAN OF SITE
- 3 GENERAL PLAN OF STRUCTURE
- 4 TYPICAL SECTION THRU CULVERT

CITY OF KALAMAZOO SCHIPPERS LANE CULVERT REPLACEMENT

CITY OF KALAMAZOO
SECTION 13 T2S, R11W

GENERAL PROVISIONS

THE IMPROVEMENTS COVERED BY THESE PLANS SHALL BE DONE IN ACCORDANCE WITH THE PROPOSAL AND ACCOMPANYING SPECIFICATIONS FOR THIS PROJECT INCLUDING THE 2020 MICHIGAN DEPARTMENT OF TRANSPORTATION STANDARD SPECIFICATIONS FOR HIGHWAY CONSTRUCTION.

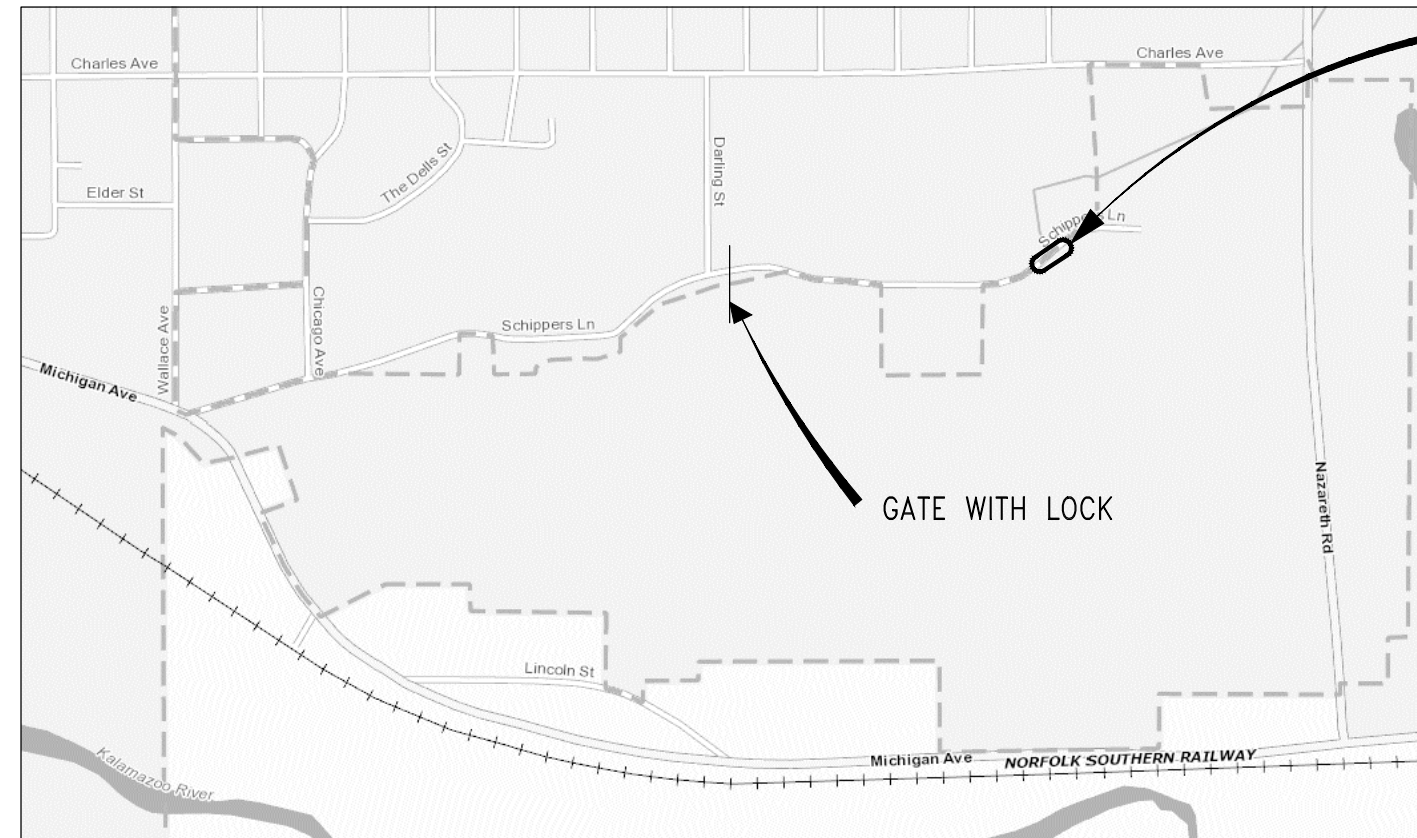
THE LOCATION OF ALL PUBLIC UTILITIES SHOWN ON THESE PLANS IS TAKEN FROM THE BEST AVAILABLE DATA. THE CITY OF KALAMAZOO WILL NOT BE RESPONSIBLE FOR ANY OMISSION OR VARIATIONS FROM THE LOCATIONS SHOWN. PURSUANT TO ACT 174 OF THE PA OF 2013 AS A CONDITION OF THIS CONTRACT, A MINIMUM 3 DAYS NOTICE, SHALL BE GIVEN TO MISS DIG PRIOR TO UNDERGROUND WORK TO BE PERFORMED IN ACCORDANCE WITH THIS CONTRACT. PHONE (800)-482-7171 OR (800)-482-7161 OR 811.

THE ELEVATIONS ON THESE PLANS ARE BASED ON NAVD 88 DATUM.

CONTACT FOR GATE ACCESS: SOHIL MANJIYANI, 269-216-1794.

THE DESIGN OF THE STRUCTURAL MEMBERS IS BASED ON MATERIAL OF THE FOLLOWING GRADES AND STRESSES:

STRUCTURAL STEEL FOR SHEET PILING GRADE 50W Fy = 50,000 psi



PROJECT LOCATION

MDOT STANDARD PLANS
AND SPECIAL DETAILS

ITEM OF WORK	STD PLAN NUMBERS
BEDDING AND FILLING AROUND PIPE CULVERTS	R-82-D
PRECAST CONCRETE END SECTION FOR PIPE CULVERT	R-86-F
SOIL EROSION & SEDIMENTATION CONTROL MEASURES	R-96-E

PREPARED UNDER THE SUPERVISION OF:



1-30-23
DATE

ALAN HALBEISEN, P.E.
ORCHARD, HILTZ, AND MCCUMMENT, INC.

CITY OF KALAMAZOO APPROVAL:

SOHIL MANJIYANI, P.E.
SENIOR CIVIL ENGINEER
CITY OF KALAMAZOO

REVISIONS	RECOMMENDED FOR APPROVAL		APPROVED	
	BY	DATE	BY	DATE
DESCRIPTION				

PROJECT NO. 0039-19-0010 SCHIPPERS LANE CULVERT REPLACEMENT



EGLE
WRP036610
Approved
Issued On: 02/27/2023
Expires On: 02/27/2028

JOB BENCHMARK #200
 SET COTTON SPINDLE IN W/FACE OF
 11" TREE, S OF CULVERT E/SIDE OF
 PATH ±33' E OF TP#100
 ELEV 776.03

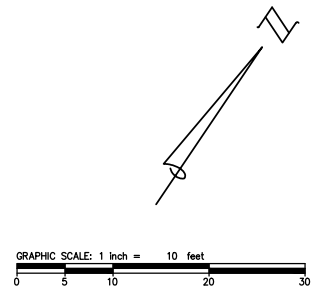
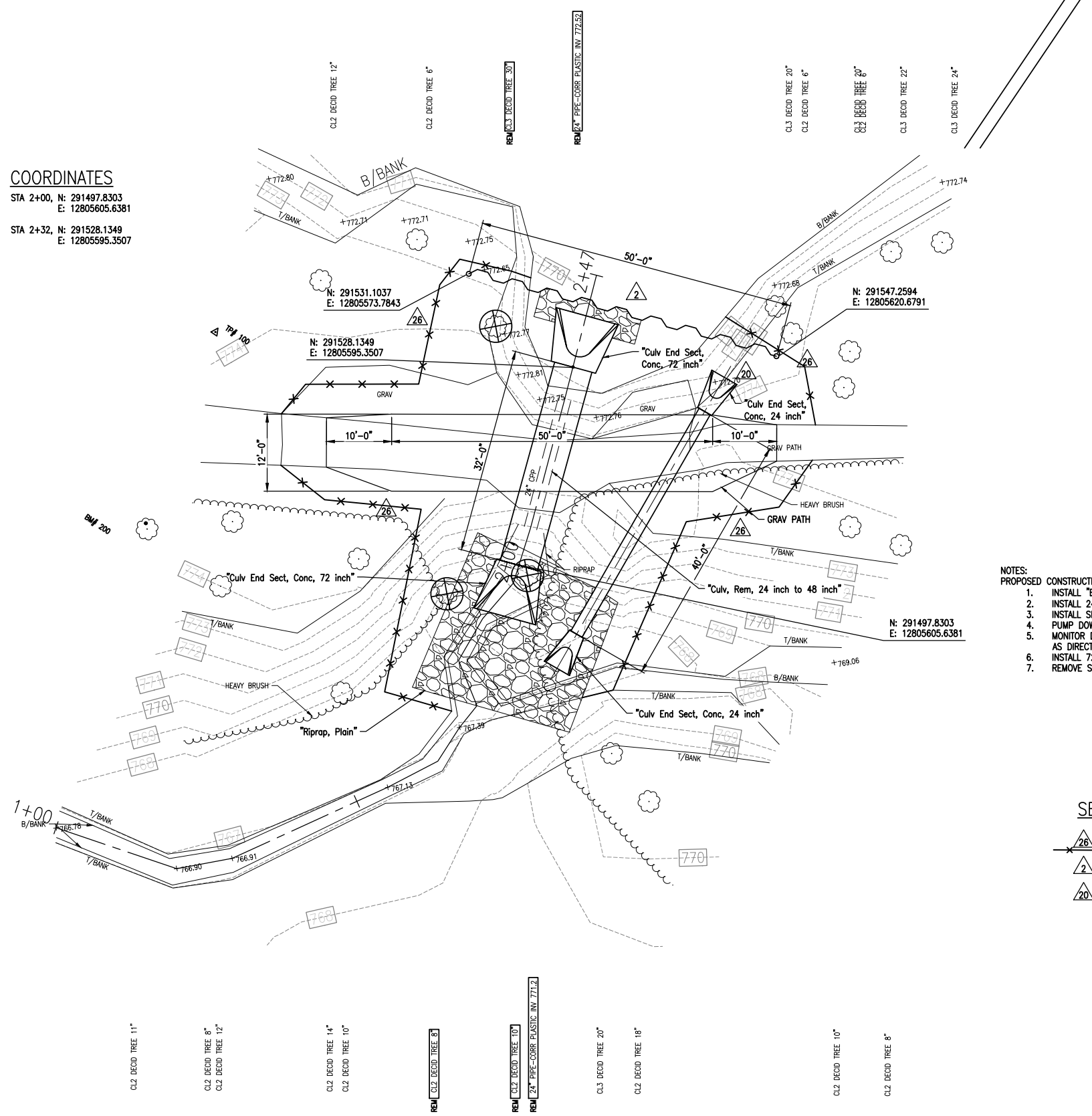
TRAVERSE POINT #100
 N 291501.51
 E 12805546.11 ELEV 773.96

TRAVERSE POINT #101
 N 291437.84
 E 12805460.71 ELEV 774.62

COORDINATES

STA 2+00, N: 291497.8303
 E: 12805605.6381

STA 2+32, N: 291528.1349
 E: 12805595.3507

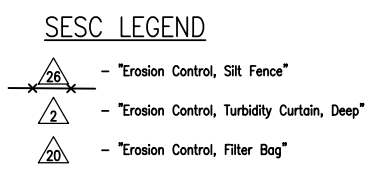


QUANTITIES THIS SHEET

TOTAL	UNIT	DESCRIPTION
1	LSUM	Mobilization, Max \$15,000
0.02	Acre	Clearing
1	Ea	Tree, Rem, 19 inch to 36 inch
2	Ea	Tree, Rem, 6 inch to 18 inch
2	Ea	Culv, Rem, 24 inch to 48 inch
30	Cyd	Excavation, Peat
*	3	Cyd Backfill, Streambed, CIP
2	Ea	Erosion Control, Filter Bag
300	Ft	Erosion Control, Silt Fence
80	Ft	Erosion Control, Turbidity Curtain, Deep
65	Syd	Aggregate Surface Cse, 6 inch
2	Ea	Culv End Sect, Conc, 24 inch
2	Ea	Culv End Sect, Conc, 72 inch
40	Ft	Culv, CI A, Conc, 24 inch
32	Ft	Culv, CI A, Conc, 72 inch
150	Sft	Steel Sheet Piling, Temp
*	1	LSUM Bypass Pumping
59	Syd	Riprap, Plain
164	Syd	Slope Restoration, Non-Freeway, Type A

* REFER TO SPECIAL PROVISION

- NOTES:**
- PROPOSED CONSTRUCTION SEQUENCE IS AS FOLLOWS:
1. INSTALL "Erosion Control, Silt Fence"
 2. INSTALL 24 INCH PIPE FOR BYPASS PUMPING
 3. INSTALL SHEET PILING TO ELEVATION 773.00
 4. PUMP DOWN THE POND AT A RATE OF 5 INCHES PER DAY TO ELEVATION 770.00
 5. MONITOR DOWNSTREAM CHANNEL AND STRUCTURES DURING DRAWDOWN AND DECREASE RATE IF NEEDED, AS DIRECTED BY ENGINEER
 6. INSTALL 72 INCH PIPE, END SECTION AND RIPRAP
 7. REMOVE SHEET PILING



DRAWING PATH: \\nrm\dfs\Corporate\Projects\0000_0100\0039190010_schippers_culvert\Drawings\Civil\Plans_Constr\19010CON.dwg Feb 01, 2023 - 4:40pm

OHM
 ARCHITECTS ENGINEERS PLANNERS

34000 Plymouth Road
 Livonia, MI 48150
 P (734) 522-6711 | F (734) 522-6427

OHM-ADVISORS.COM

DATE	PROJ NUMBER	ENG	PROJ MGR	CADD	COUNTY	MUNICIPALITY
3/2022	0039-19001	NUN	AH	NUN	KALAMAZOO	KALAMAZOO

CITY OF KALAMAZOO
SCHIPPERS LANE CULVERT
GENERAL PLAN OF SITE



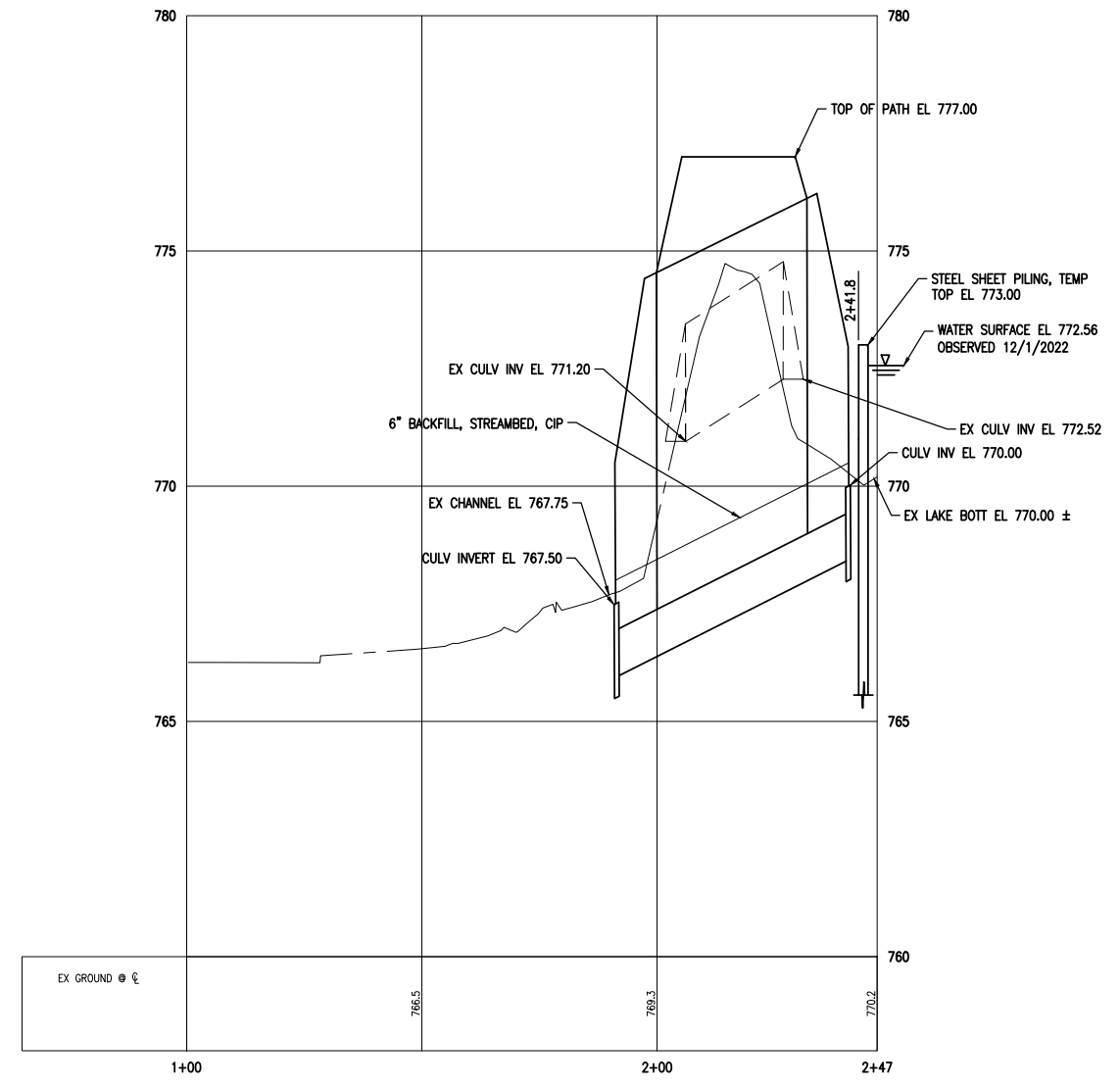
WRP036610 v1.0
 Applied
 2 OF 8
 Issued On: 02/27/2023
 Expires On: 02/27/2028

COPYRIGHT 2016 OHM ALL DRAWINGS AND WRITTEN MATERIALS APPEARING HEREIN CONSTITUTE THE ORIGINAL AND UNPUBLISHED WORK OF OHM AND THE SAME MAY NOT BE DUPLICATED, DISTRIBUTED, OR DISCLOSED WITHOUT PRIOR WRITTEN CONSENT OF OHM

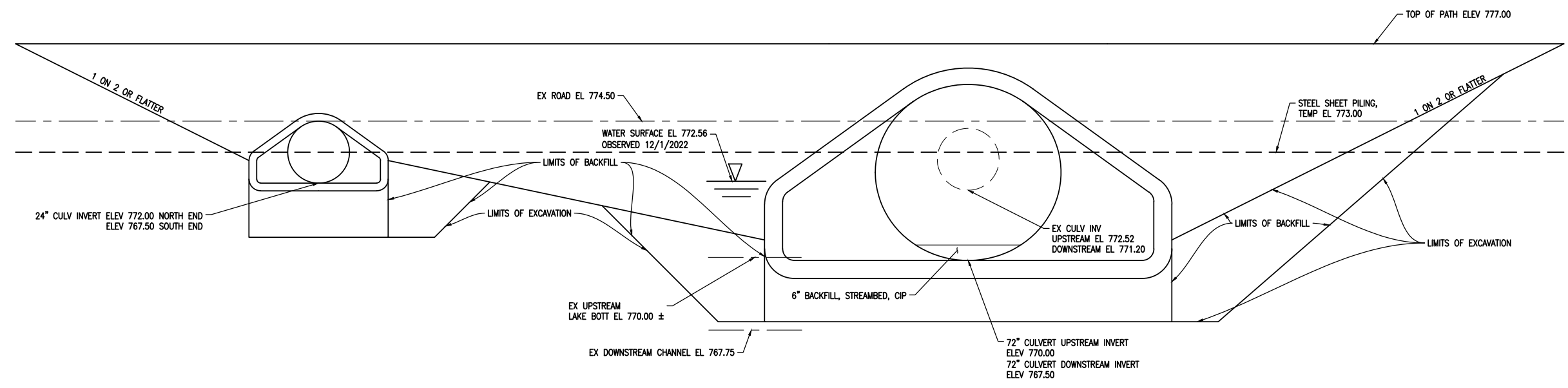
JOB BENCHMARK #200
 SET COTTON SPINDLE IN W/FACE OF
 11" TREE, S OF CULVERT E/SIDE OF
 PATH ±33' E OF TP#100 ELEV 776.03

TRAVERSE POINT #100
 N 291501.51
 E 1280546.11 ELEV 773.96

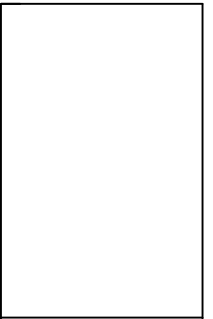
TRAVERSE POINT #101
 N 291437.84
 E 12805460.71 ELEV 774.62



STREAM PROFILE



NORTH ELEVATION CULVERT
 N.T.S.



REVISIONS	DATE	DESCRIPTION

DATE	PROJ NUMBER	ENG	PROJ LEAD	CADD	COUNTY	MUNICIPALITY
3/2022	0038-15010				KALAMAZOO	KALAMAZOO

CITY OF KALAMAZOO
 SCHIPPERS LANE CULVERT
 GENERAL PLAN OF STRUCTURE



Know what's below.
 Call before you dig.

WRP036610 v1.0
 Approved
 3
 OF 5
 Issued On: 02/27/2023
 Expires On: 02/27/2028

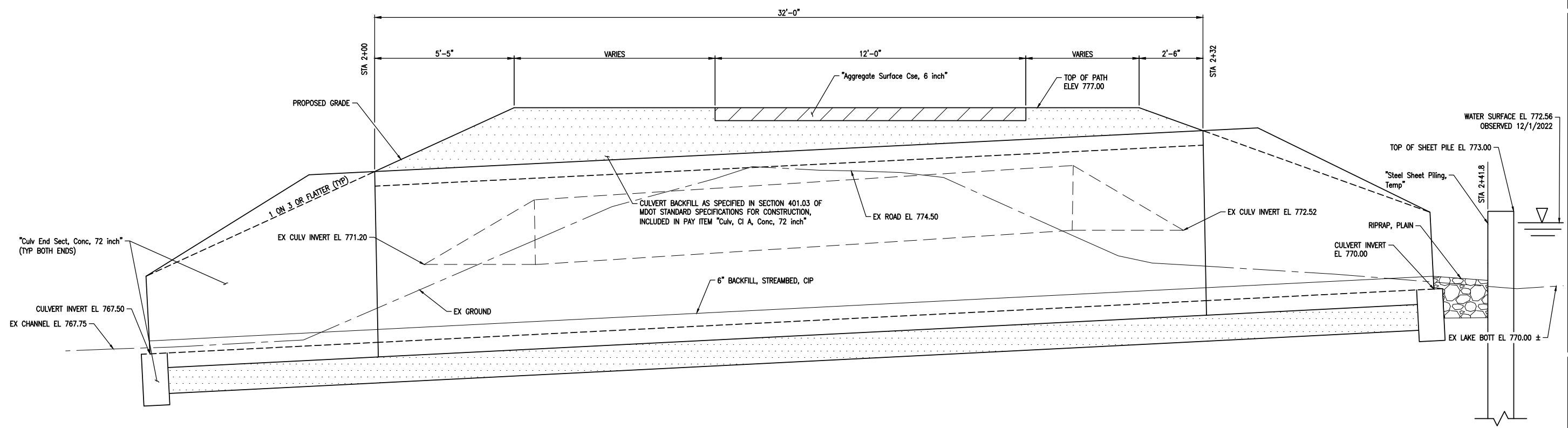
DRAWING PATH: \\ohm\dfs\Corporate\Projects\0000_0100\0038190010_schippers_culvert\Drawings\Civil\Plans_Constr\19010CON.dwg Feb 01, 2023 - 4:40pm

COPYRIGHT 2018 OHM ALL DRAWINGS AND WRITTEN MATERIALS APPEARING HEREIN CONSTITUTE THE ORIGINAL AND UNPUBLISHED WORK OF OHM AND THE SAME MAY NOT BE DUPLICATED, DISTRIBUTED, OR DISCLOSED WITHOUT PRIOR WRITTEN CONSENT OF OHM

JOB BENCHMARK #200
 SET COTTON SPINDLE IN W/FACE OF
 11" TREE, S OF CULVERT E/SIDE OF
 PATH ±33' E OF TP#100 ELEV 776.03

TRAVERSE POINT #100
 N 291501.51
 E 1280546.11 ELEV 773.96

TRAVERSE POINT #101
 N 291437.84
 E 12805460.71 ELEV 774.62



TYPICAL SECTION THRU CULVERT LENGTH
 N.T.S.

DRAWING PATH: \\ohm\dfs\Corporate\Projects\0000_0100\0039190010_schippers_culvert\Drawings\Civil\Plans_Constr\190100CON.dwg Feb 01, 2023 - 4:40pm



Know what's below.
 Call before you dig.

DATE	PROJ NUMBER	ENG	PROJ MGR	CADD	COUNTY	MUNICIPALITY	REVISIONS
3/2/22	0039190010	NUN	AH	NUN	KALAMAZOO	KALAMAZOO

CITY OF KALAMAZOO
 SCHIPPERS LANE CULVERT
 GENERAL PLAN OF STRUCTURE

WRP036610 v1.0
 Approved
 OF 5
 Issued On: 02/27/2023
 Expires On: 02/27/2028

COPYRIGHT 2018 OHM ALL DRAWINGS AND WRITTEN MATERIALS APPEARING HEREIN CONSTITUTE THE ORIGINAL AND UNPUBLISHED WORK OF OHM AND THE SAME MAY NOT BE DUPLICATED, DISTRIBUTED, OR DISCLOSED WITHOUT PRIOR WRITTEN CONSENT OF OHM