

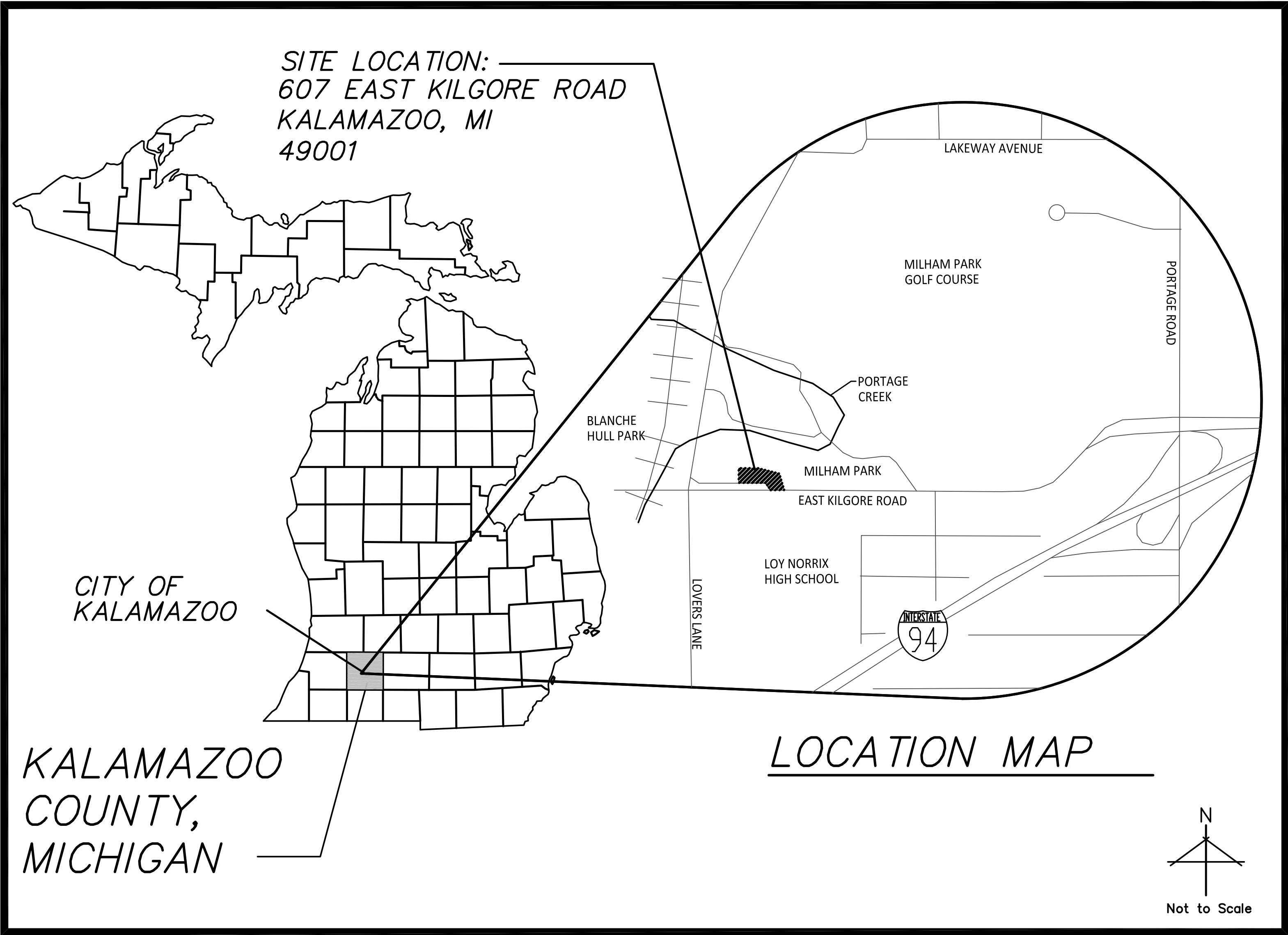
CITY OF KALAMAZOO PARKS AND RECREATION DEPARTMENT
**MILHAM PARK PLAYGROUND
IMPROVEMENTS**

KALAMAZOO, MICHIGAN
BID #: 90900-001.0

OWNER/CLIENT:
CITY OF KALAMAZOO
241 WEST SOUTH STREET
KALAMAZOO, MICHIGAN 49007

LANDSCAPE ARCHITECT:
O'BOYLE COWELL BLALOCK
& ASSOCIATES, INC.
350 EAST MICHIGAN AVENUE, SUITE #415
KALAMAZOO, MICHIGAN 49007
269-381-3357 TELE
269-381-2944 FAX

LOCATION MAP



SHEET INDEX
NO.

C0.0	COVER SHEET
C0.1	TOPOGRAPHIC SURVEY
C1.0	OVERALL DEMOLITION PLAN
C2.0	OVERALL LAYOUT PLAN
C3.0	OVERALL GRADING PLAN
C3.1	PLAYGROUND DRAINAGE ENLARGEMENT PLAN
L1.0	OVERALL LANDSCAPE PLAN

HARD COPY IS INTENDED TO
BE 24"x36" WHEN PLOTTED.
SCALE(S) INDICATED AND
GRAPHIC QUALITY MAY NOT
BE ACCURATE FOR ANY
OTHER SIZES.

Issued For:	Date
PRE-SITE PLAN REVIEW	10-22-21
ISSUED FOR BID	04-13-22

Project:
**Milham Park
Playground
Improvements**

Kalamazoo, Michigan
Sheet Title

Cover Sheet

NOTES:
1) Except where other wise indicated on the plans or in the proposal and supplemental specifications or special provisions contained herein, all materials and workmanship shall be in accordance with Michigan Department of Transportation Standard Specifications for Construction, 1996 Edition.
2) Call Miss Dig, 1-800-482-7171 three working days, excluding Saturday, Sunday and holidays, before starting your project.


WIGHTMAN

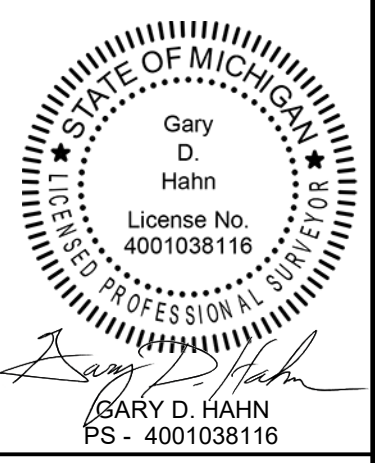
BENTON HARBOR
269.927.0100

KALAMAZOO
269.327.3532

ALLEGAN
269.673.8465

ROYAL OAK
248.791.1371

www.gowightman.com

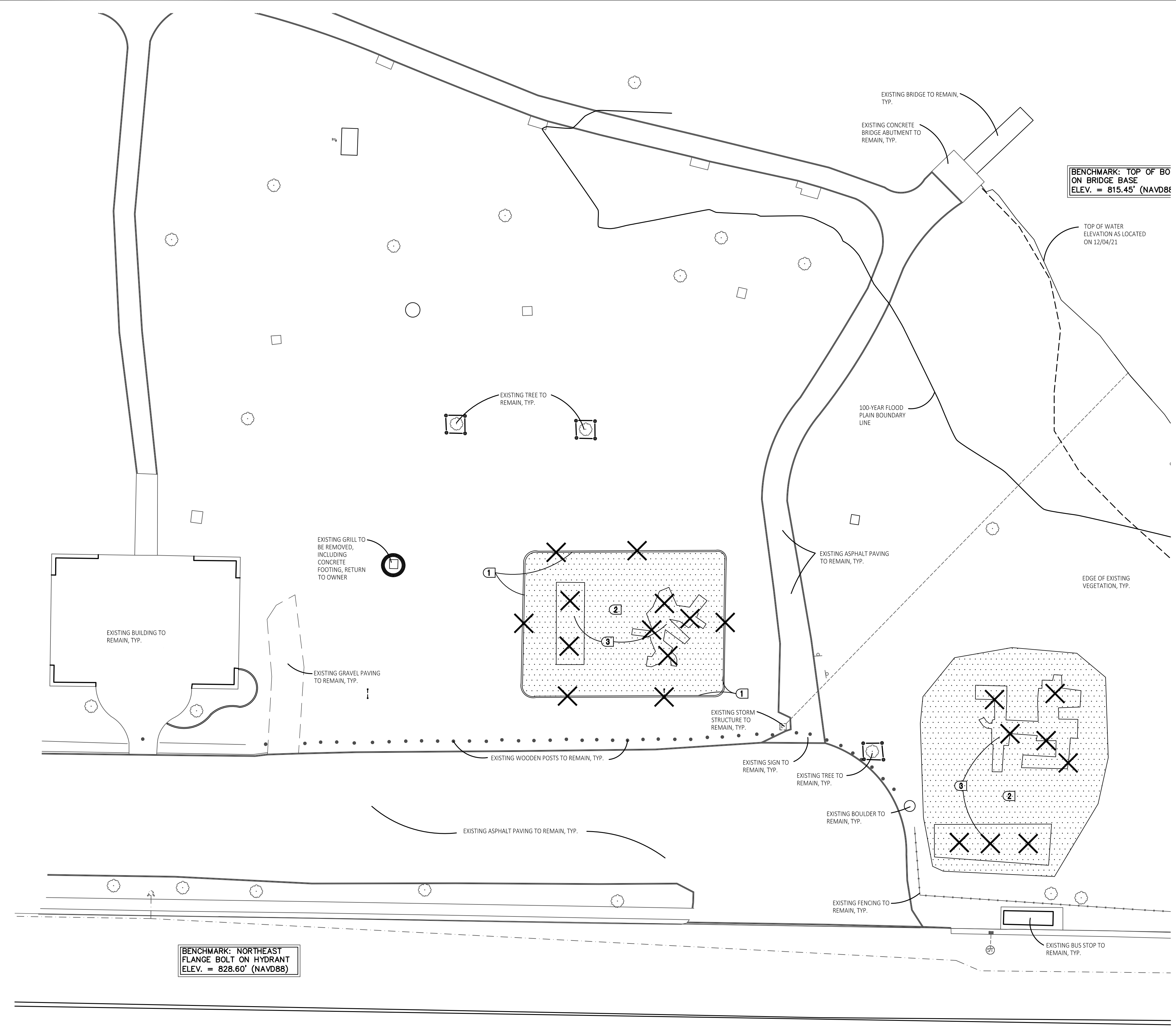


**CITY OF
KALAMAZOO**
251 MILLS STREET
KALAMAZOO, MI 49048

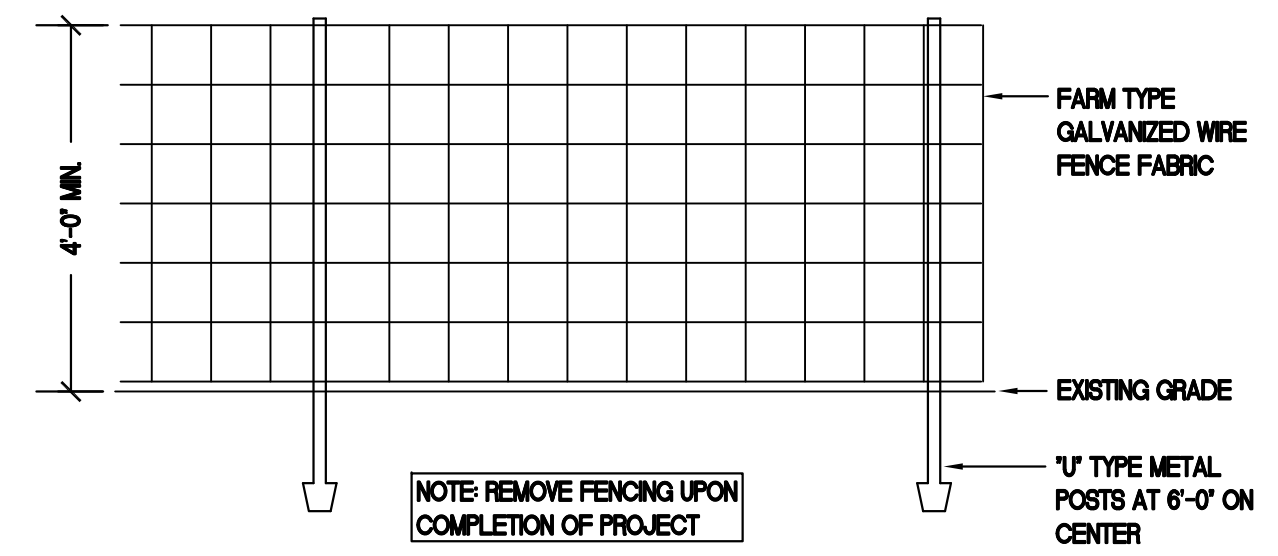
TOPOGRAPHIC
SURVEY

JOB No. 204403

C0.1



1 Overall Demolition Plan
Scale: 1"=20'-0"



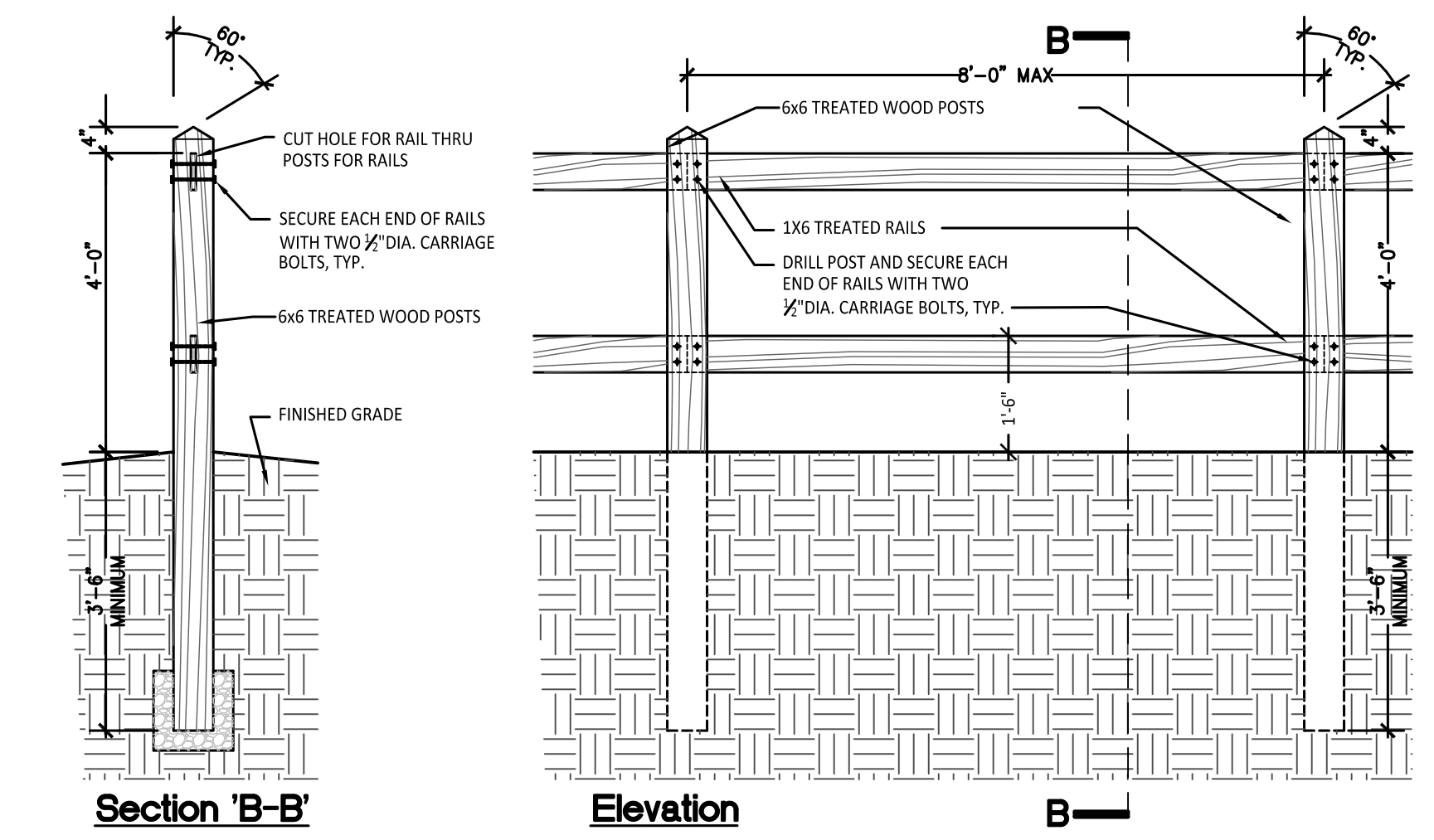
2 Tree Protection Fencing Detail
Not To Scale

- ### DEMOLITION NOTES:
1. SURVEY OF EXISTING CONDITIONS PROVIDED BY WIGHTMAN, INC. 433 EAST RANDOM STREET, KALAMAZOO, MICHIGAN 49007, (269)327-3532.
 2. VERIFY LOCATIONS OF ALL BELOW GRADE UTILITIES PRIOR TO BEGINNING WORK. 72 HOURS BEFORE YOU DIG CALL 'MISS DIG' AT 1-800-482-7171.
 3. PROTECT ALL TREES + EXISTING FEATURES TO REMAIN AS SPECIFIED.
 4. REFER TO LAYOUT PLAN FOR LIMITS OF WORK.
 5. DISCREPANCIES BETWEEN SITE AND PLANS SHOULD BE REPORTED TO THE PROJECT MANAGER IMMEDIATELY.
 6. ALL AREAS OF TREE CLEARING SHALL BE STAKED FOR ARCHITECT'S APPROVAL PRIOR TO CLEARING.
 7. ALL TOPSOIL AND EXCESS FILL MATERIAL SHALL BE STOCKPILED ON SITE SEPARATELY FOR LATER RE-USE. LOCATE STOCKPILES IN AREAS AS DIRECTED BY CONSTRUCTION MANAGER AND PROTECT FROM EFFECTS OF EROSION.

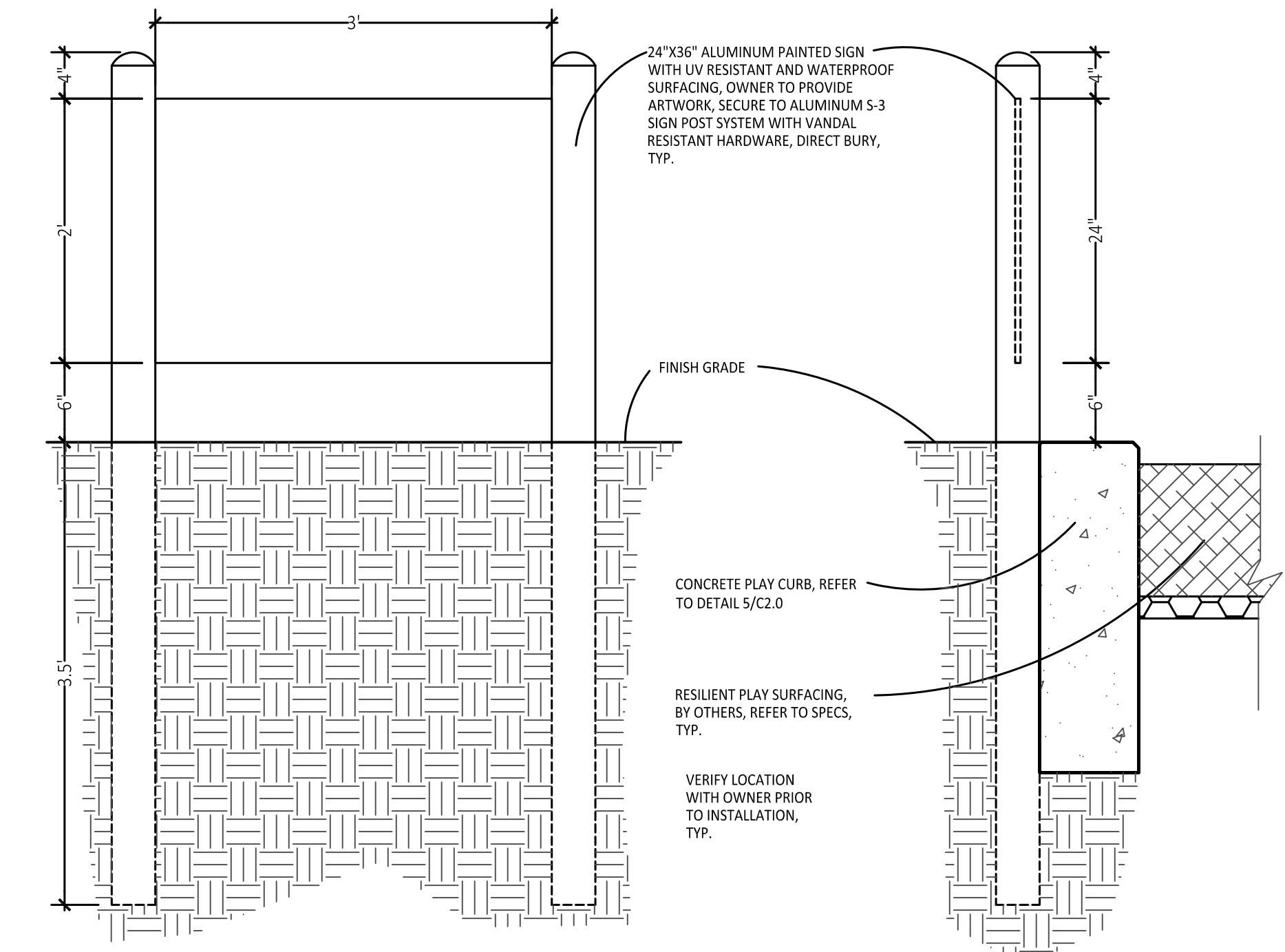
- ### DEMOLITION LEGEND:
- REMOVE PLAY SAND
 - REMOVE CONCRETE CURB
 - REMOVE MISCELLANEOUS FEATURE AS NOTED
 - TEMPORARY TREE PROTECTION FENCE, REFER TO 2/C1.0
 - LIMIT OF WORK

- ### TREE PROTECTION NOTES:
- PROVIDE AND MAINTAIN TEMPORARY TREE PROTECTION FENCING IN ALL LOCATIONS MARKED.
- TREE FENCING SHALL BE PROVIDED AND IN PLACE PRIOR TO ANY WORK ON SITE (INCLUDING TOPSOIL STRIPPING OPERATIONS). REFER TO THE FOLLOWING NOTES AND 2/NO. 200000 FOR FURTHER INFORMATION REGARDING TOPSOIL.
1. EXISTING GROUND COVER AND TOPSOIL SHALL NOT BE REMOVED FROM TREE PROTECTION AREAS DURING EARTHWORK PHASE.
 2. VEHICULAR TRAFFIC, PARKING, EQUIPMENT OR MATERIAL STORAGE MAY NOT OCCUR WITHIN THE TREE PROTECTION AREAS AT ANY TIME.
 3. NO EXCAVATION SHALL BE MADE WITHIN THE TREE PROTECTION AREAS EXCEPT AS NOTED OTHERWISE.

- ### SITE DEMOLITION KEY
- 1 REMOVE EXISTING CONCRETE CURB.
 - 2 REMOVE EXISTING PLAY SAND
 - 3 REMOVE EXISTING PLAY EQUIPMENT, INCLUDING CONCRETE FOOTINGS. DESTROY ALL EQUIPMENT COMPLETELY SO THAT IT CANNOT BE RE-ASSEMBLED.



3 Detail - Split Rail Fence
Not To Scale



4 Detail - Communication Board
Not To Scale

OCBA
LANDSCAPE ARCHITECTS

350 East Michigan Avenue Suite #415
Kalamazoo Michigan 49007
Phone (269) 381-3357
Fax (269) 381-2944

Landscape Architecture
Urban Planning
Parks & Recreation
Campus & Institutional Planning
Camp Planning & Design

HARD COPY IS INTENDED TO BE 24"x36" WHEN PLOTTED. SCALE(S) INDICATED AND GRAPHIC QUALITY MAY NOT BE ACCURATE FOR ANY OTHER SIZES.

Issued For:	Date
PRE-SITE PLAN REVIEW	10-22-21
ISSUED FOR BID	04-13-22

Project:

**Milham Park
Playground
Improvements**

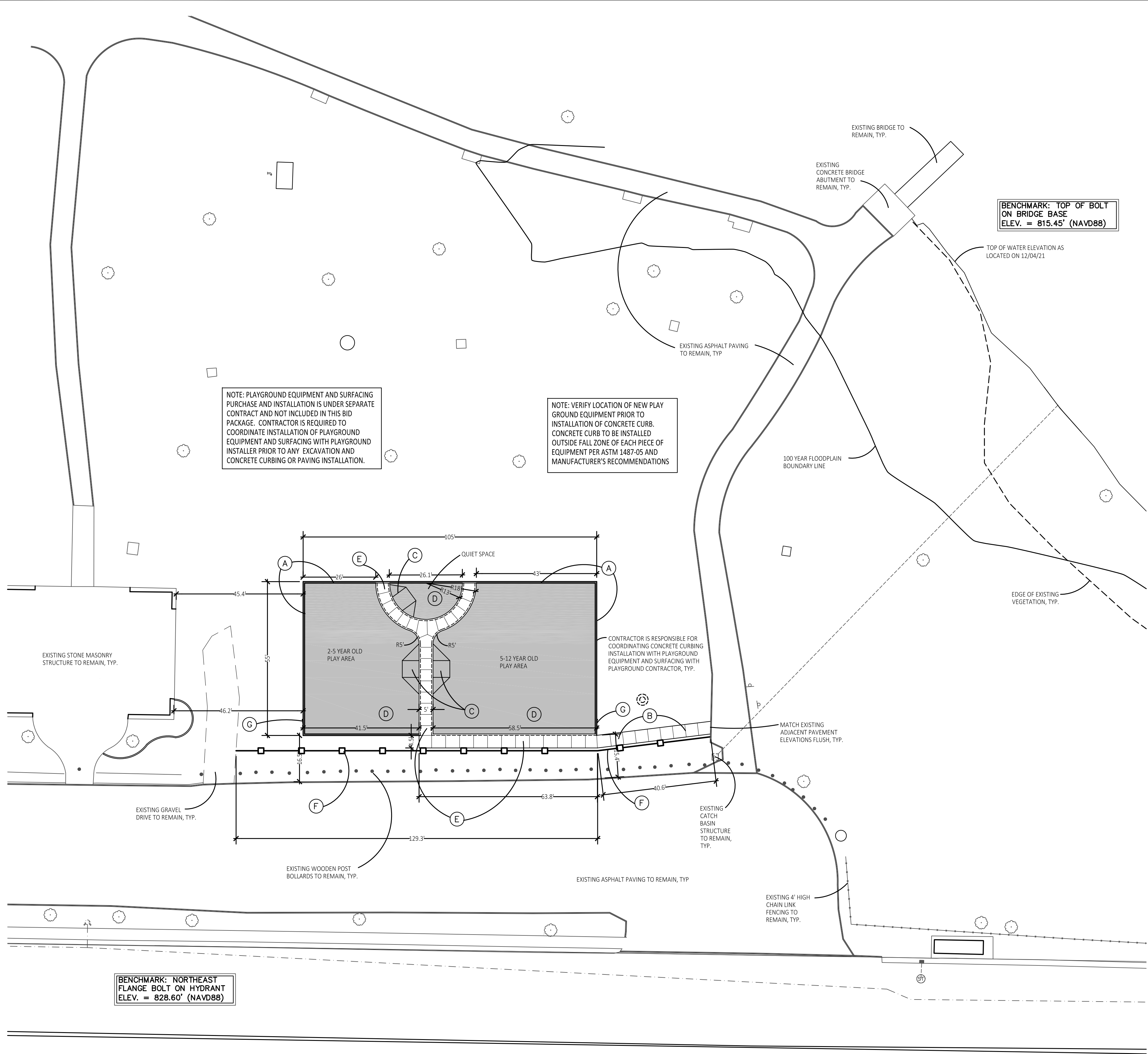
Kalamazoo, Michigan

Sheet Title

Demolition Plan

0 20 40 60
SCALE IN FEET
North

Job No. 52005 Sheet No. C1.0



1 Overall Layout Plan
Scale: 1"=20'-0"

LAYOUT NOTES:

1. SURVEY OF EXISTING CONDITIONS PROVIDED BY WIGHTMAN, INC., 433 EAST RANDOM STREET, KALAMAZOO, MICHIGAN 49007, (269)927-3532.
2. PAVEMENT DIMENSIONS AND RADI ARE TO EDGE OF PAVEMENT OR BACK OF CURB.
3. DISCREPANCIES BETWEEN SITE AND PLANS SHOULD BE REPORTED TO THE PROJECT MANAGER IMMEDIATELY.
4. VERIFY LOCATIONS OF ALL BELOW GRADE UTILITIES PRIOR TO BEGINNING WORK. 72 HOURS BEFORE YOU DIG CALL "MISS DIG" AT 1-800-482-7171.
5. PROVIDE BARRIER FREE PARKING SIGNS FOR ALL BARRIER FREE PARKING SPACES. ALL SIGNS TO COMPLY WITH THE MDTOT MICHIGAN MANUAL OF UNIFORM TRAFFIC CONTROL DEVICES.
6. SITE LAYOUT POINTS SHOULD BE ESTABLISHED AND PROTECTED FOR FUTURE SITE WORK.

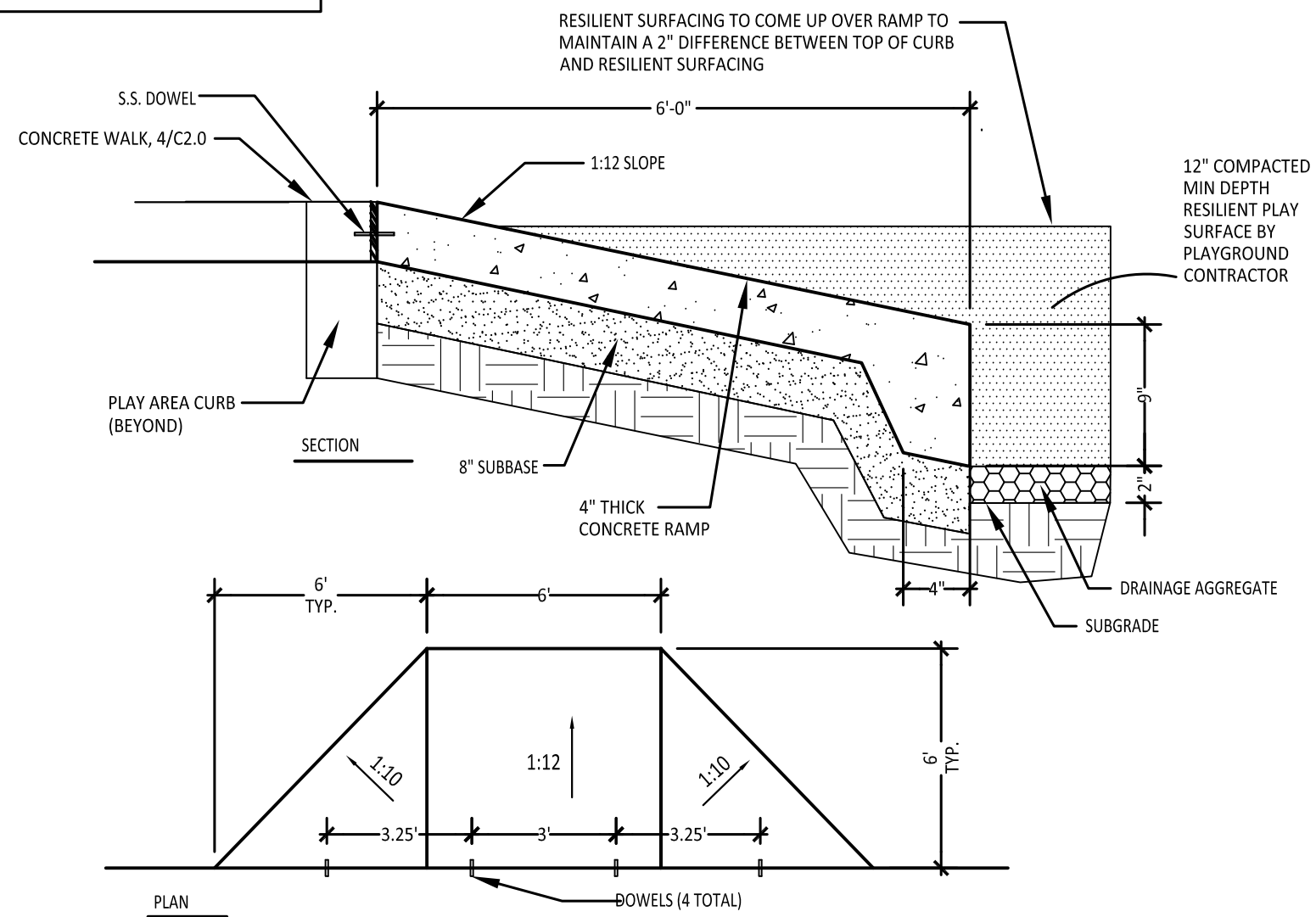
BARRIER-FREE NOTES

- BARRIER-FREE PARKING AND ACCESSIBLE ROUTE(S) MUST COMPLY WITH THE AMERICANS WITH DISABILITIES ACT AND MICHIGAN BARRIER-FREE CODE REQUIREMENTS, INCLUDING BUT NOT LIMITED TO THE FOLLOWING:
- 1:50 (2%) MAXIMUM CROSS-SLOPE ON ACCESSIBLE ROUTE.
 - NO CHANGES IN LEVEL GREATER THAN 1/2" ALONG ACCESSIBLE ROUTE.
 - 1:20 (5%) MAXIMUM LONGITUDINAL SLOPE ON ACCESSIBLE ROUTE (EXCEPT WHERE RAMPS ARE PROVIDED).
 - 1:50 (2%) MAXIMUM SLOPE (IN ANY DIRECTION) IN B.F. PARKING AND ACCESS AISLES.

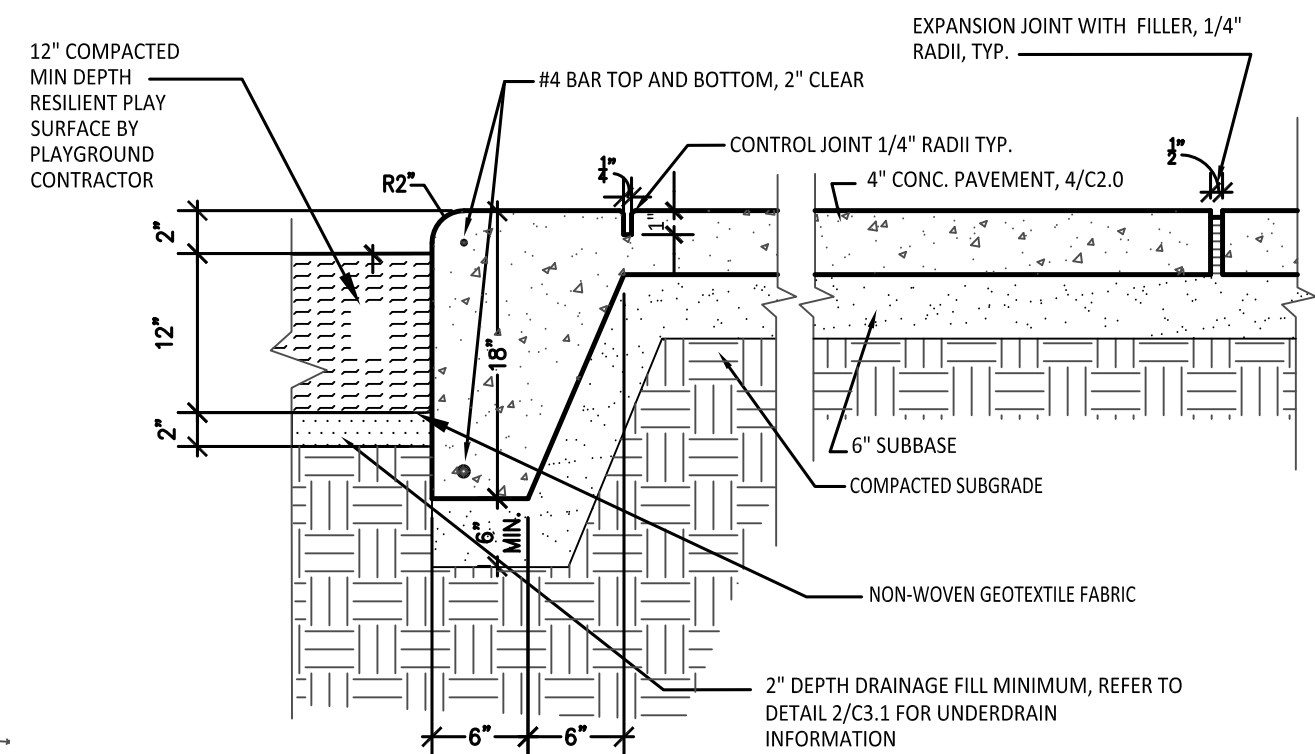
PROPOSED FEATURES LEGEND:

SYMBOL	DESCRIPTION
	RESILIENT PLAY SURFACING (BY OTHERS)
	PLAY ACCESS RAMP
	4' HIGH SPLIT RAIL FENCE

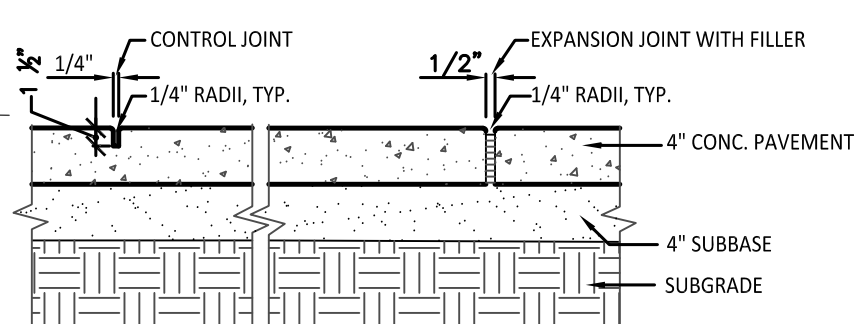
KEY	DESCRIPTION	DETAIL
(A)	CONCRETE PLAY CURB	5 / C2.0
(B)	CONCRETE WALK	4 / C2.0
(C)	PLAY ACCESS RAMP	2 / C2.0
(D)	RESILIENT PLAY SURFACING (BY OTHERS)	REFER TO SPECS.
(E)	PLAY SURFACING EDGE RESTRAINT + WALK	3 / C2.0
(F)	4' HIGH WOOD SPLIT RAIL FENCING	3 / C1.0
(G)	COMMUNICATION BOARD	4 / C1.0



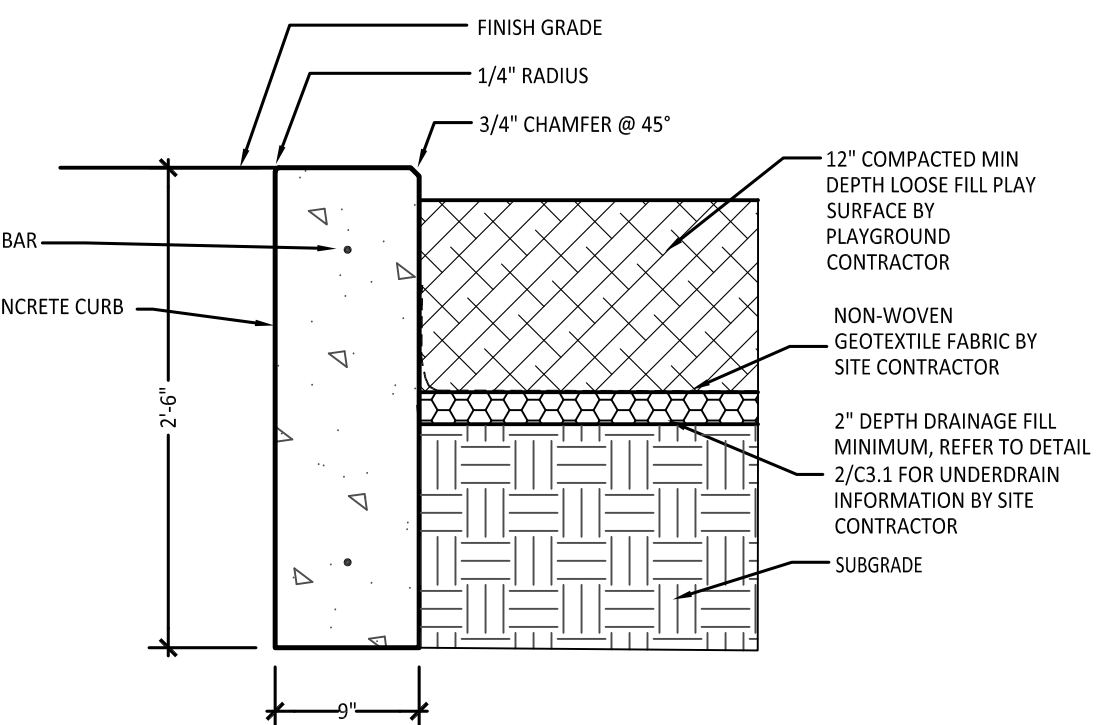
2 Access Ramp to Play Areas Detail
Not To Scale



3 Play Surfacing Edge Restraint Detail
Not To Scale



4 Section-Conc. Paving + Jointing
Not To Scale



5 Concrete Play Curb Detail
Not To Scale



350 East Michigan Avenue Suite #415
Kalamazoo Michigan 49007
Phone (269) 381-3357
Fax (269) 381-2944

Landscape Architecture
Urban Planning
Parks & Recreation
Campus & Institutional Planning
Camp Planning & Design

HARD COPY IS INTENDED TO BE 24"x36" WHEN PLOTTED. SCALE(S) INDICATED AND GRAPHIC QUALITY MAY NOT BE ACCURATE FOR ANY OTHER SIZES.

Issued For: Date
PRE-SITE PLAN REVIEW 10-22-21
ISSUED FOR BID 04-13-22

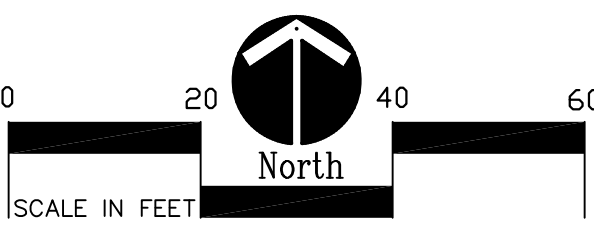
Project:

Milham Park Playground Improvements

Kalamazoo, Michigan

Sheet Title

Overall Layout Plan



Job No. Sheet No.

52005 C2.0

GRADING NOTES:

1. SURVEY OF EXISTING CONDITIONS PROVIDED BY WIGHTMAN, INC., 433 EAST RANSOM STREET, KALAMAZOO, MICHIGAN 49007, (269)327-3532.
2. VERIFY LOCATIONS OF ALL BELOW GRADE UTILITIES PRIOR TO BEGINNING WORK. 72 HOURS BEFORE YOU DIG CALL "MBS DIG" AT 1-800-442-7770.
3. ALL NEW PAVEMENTS AND TURF AREAS ARE INTENDED TO DRAIN FREELY WITH NO PONDING. IF THIS CANNOT BE ACHIEVED USING THE PROPOSED GRADES, NOTIFY THE OWNER'S REPRESENTATIVE IMMEDIATELY FOR RESOLUTION.
4. ALL NEW PAVEMENT ELEVATIONS AT EXTERIOR DOORS SHALL MATCH EXISTING FINISH FLOOR ELEVATIONS, TYPICAL.
5. FINISH GRADE SLOPE AT ALL BARRIER FREE PARKING SPACES AND ACCESS AISLES SHALL NOT EXCEED 2% IN ALL DIRECTIONS, TYPICAL.
6. ADJUST TOP OF EXISTING MANHOLES, CATCH BASINS, VAULT COVERS, ETC. TO NEW FINISH GRADE AS REQUIRED.
7. SEE SITE MECHANICAL AND SITE ELECTRICAL PLANS FOR ALL ADDITIONAL SITE UTILITY DEMOLITION AND CONSTRUCTION.

IMPORTANT NOTE

GENERAL EARTHWORK NOTE:

CUTS AND FILLS AT THIS SITE MAY OR MAY NOT BALANCE. IT IS THE CONTRACTOR'S RESPONSIBILITY TO VERIFY THE REQUIRED EARTHWORK VOLUMES BASED ON THE GRADING PLAN SHOWN. IF FILL IS REQUIRED, THE CONTRACTOR SHALL INCLUDE THE REQUIRED VOLUME OF IMPORTED CLASS II SAND IN THE BASE BID PROPOSAL. IF EXCESS SOILS NEED TO BE SPOILED, THE CONTRACTOR SHALL INCLUDE HAULING AND SPOILING SOILS OFF SITE IN THE BASE BID PROPOSAL. NO CONTRACT COST ADJUSTMENTS WILL BE CONSIDERED FOR EARTHWORK REQUIRED TO BALANCE THE SITE.

IMPORTANT NOTE

PROPOSED FEATURES LEGEND:

	EXISTING CONTOURS
	EXISTING SPOT ELEVATIONS
	PROPOSED CONTOURS
	PROPOSED SPOT ELEVATIONS
	DIRECTION AND PERCENTAGE OF SLOPE
	LEACHING BASIN. SEE DETAIL 4/C3.1
	INVERT ELEVATION
	TOP OF CURB ELEVATION
	BOTTOM OF CURB ELEVATION
	SILT FENCE. REFER TO 3/C3.1
	WORK LIMIT LINE
	EROSION CONTROL BLANKET. REFER TO SPECS.

EROSION CONTROL TIMELINE

ITEM	DESCRIPTION	APPROXIMATE TIME FRAME	NOTES
1.	INSTALL SILT FENCING / PERIMETER EROSION CONTROL	SPRING '22	1. CONTRACTOR SHALL MONITOR AND MAINTAIN
2.	STRIP + STOCKPILE TOPSOIL	SPRING '22	ALL EROSION CONTROL DEVICES THROUGHOUT
3.	INSTALL STORM SEWER STRUCTURES AND PIPING	SPRING '22	THE CONSTRUCTION PERIOD.
4.	INSTALL INLET SEDIMENT FILTERS AT CATCH BASINS	SPRING '22	2. ADDITIONAL EROSION CONTROL MEASURES
5.	INSTALL PAVEMENT SUB-BASE	SPRING '22	SHALL BE IMPLEMENTED AS REQUIRED TO
6.	FINISH GRADE AND SEED / STABILIZE ALL AREAS	SUMMER '22	MINIMIZE SILT LEAVING THE CONSTRUCTION SITE.

EROSION CONTROL REQUIREMENTS:

ALL CONSTRUCTION SHALL COMPLY WITH THE SOIL EROSION AND SEDIMENTATION CONTROL ACT (P.A. 347 OF 1972, AS AMENDED) AS ADMINISTERED BY CITY OF KALAMAZOO AND KALAMAZOO COUNTY. THE FOLLOWING EROSION CONTROL DEVICES ARE REFERENCED IN THE STANDARD EROSION CONTROL HANDBOOK PUBLISHED BY THE MICHIGAN DEPARTMENT OF TRANSPORTATION (MDOT DRAWING R-96-C, 8-9-2000).

ALL TEMPORARY EROSION CONTROL DEVICES SHALL BE REMOVED AT THE END OF CONSTRUCTION. TEMPORARY EROSION CONTROL DEVICES SHOULD BE IN PLACE PRIOR TO EXCAVATION, TO THE EXTENT POSSIBLE.

KEY	DESCRIPTION	TEMPORARY / PERMANENT	KEY	DESCRIPTION	TEMPORARY / PERMANENT
	PERMANENT/TEMPORARY SEEDING	P		INLET PROTECTION FABRIC DROP	T
	GEOTEXTILE SILT FENCE	T			

STORM STRUCTURE SCHEDULE :

STORM SEWER SYSTEM STRUCTURE SUMMARY						
PROPOSED STRUCTURE #	DIAMETER	RIM TYPE	RIM ELEVATION AT FLOW LINE	INVERT ELEVATION	INVERT DIRECTION	COMMENTS
LB #1	4'	EJWW 6508-O	923.50	918.50	SW	

HARD COPY IS INTENDED TO BE 24"x36" WHEN PLOTTED. SCALE(S) INDICATED AND GRAPHIC QUALITY MAY NOT BE ACCURATE FOR ANY OTHER SIZES.

Issued For:	Date
PRE-SITE PLAN REVIEW	10-22-21
ISSUED FOR BID	04-13-22

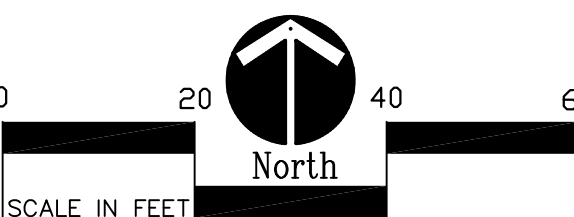
Project:

Milham Park
Playground
Improvements

Kalamazoo, Michigan

Sheet Title

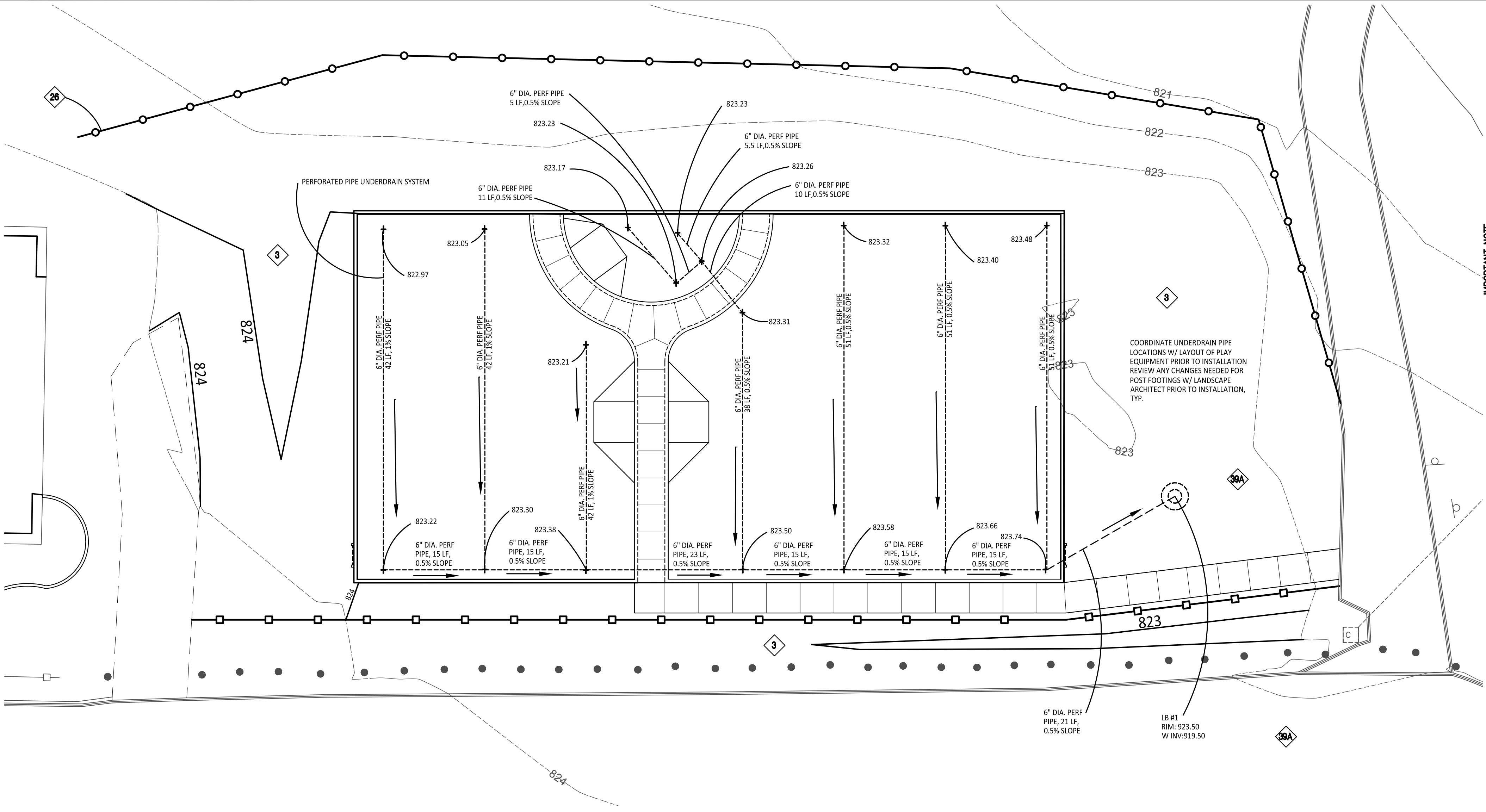
Grading Plan



Job No. Sheet No.

52005 C3.0

x Overall Grading Plan
Scale: 1"=20'-0"



GRADING NOTES:

1. SURVEY OF EXISTING CONDITIONS PROVIDED BY WIGHTMAN, INC., 433 EAST RANSOM STREET, KALAMAZOO, MICHIGAN 49007, (269)827-3532.
2. VERIFY LOCATIONS OF ALL BELOW GRADE UTILITIES PRIOR TO BEGINNING WORK. 72 HOURS BEFORE YOU DIG CALL "MISS DIG" AT 1-800-482-7771.
3. ALL NEW PAVEMENTS AND TURF AREAS ARE INTENDED TO DRAIN FREELY WITH NO PONDING. IF THIS CANNOT BE ACHIEVED USING THE PROPOSED GRADES, NOTIFY THE OWNERS REPRESENTATIVE IMMEDIATELY FOR RESOLUTION.
4. ALL NEW PAVEMENT ELEVATIONS AT EXTERIOR DOORS SHALL MATCH EXISTING FINISH FLOOR ELEVATIONS, TYPICAL.
5. FINISH GRADE SLOPE AT ALL BARRIER FREE PARKING SPACES AND ACCESS AISLES SHALL NOT EXCEED 2% IN ALL DIRECTIONS, TYPICAL.
6. ADJUST TOP OF EXISTING MANHOLES, CATCH BASINS, VAULT COVERS, ETC. TO NEW FINISH GRADE AS REQUIRED.
7. SEE SITE MECHANICAL AND SITE ELECTRICAL PLANS FOR ALL ADDITIONAL SITE UTILITY DEMOLITION AND CONSTRUCTION.

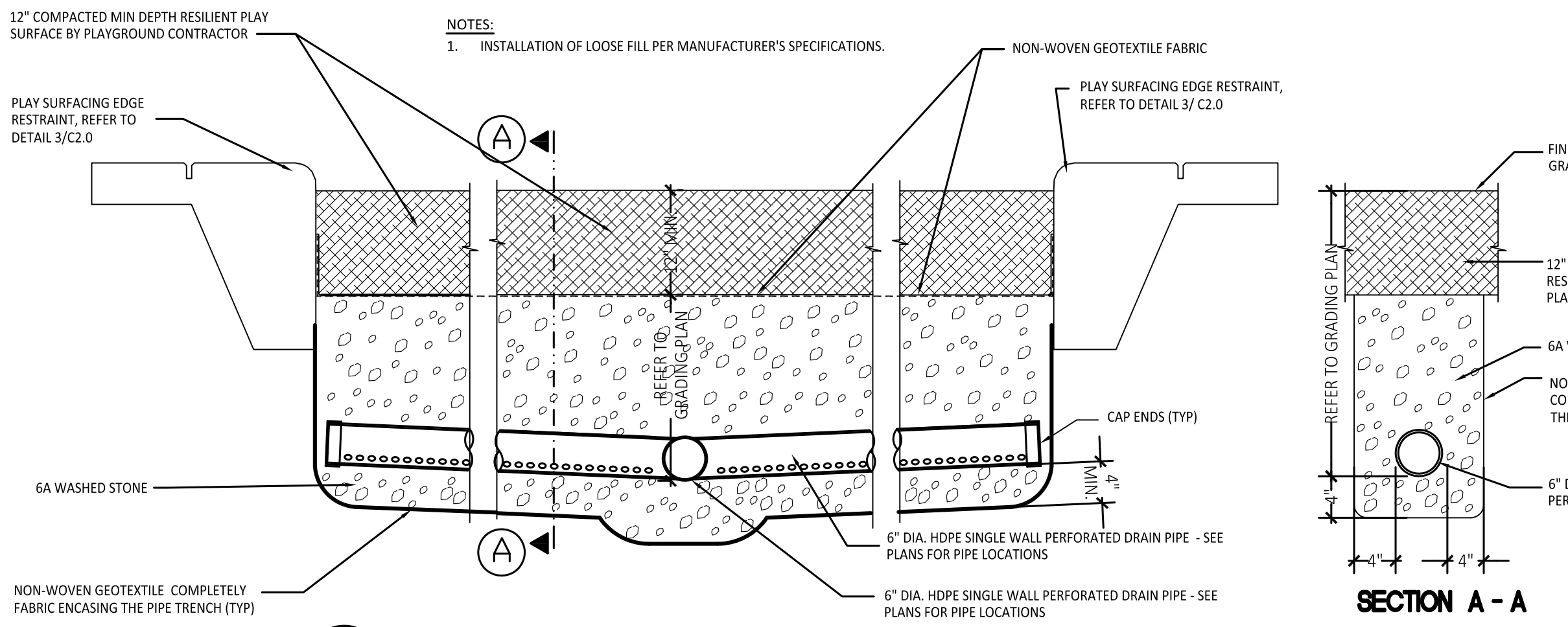
GENERAL EARTHWORK NOTE:

CUTS AND FILLS AT THIS SITE MAY OR MAY NOT BALANCE. IT IS THE CONTRACTOR'S RESPONSIBILITY TO VERIFY THE REQUIRED EARTHWORK VOLUMES BASED ON THE GRADING PLAN SHOWN. IF FILL IS REQUIRED, THE CONTRACTOR SHALL INCLUDE THE REQUIRED VOLUME OF IMPORTED CLASS II SAND IN THE BASE BID PROPOSAL. IF EXCESS SOILS NEED TO BE SPOILED, THE CONTRACTOR SHALL INCLUDE HAULING AND SPOILING SOILS OFF SITE IN THE BASE BID PROPOSAL. NO CONTRACT COST ADJUSTMENTS WILL BE CONSIDERED FOR EARTHWORK REQUIRED TO BALANCE THE SITE.

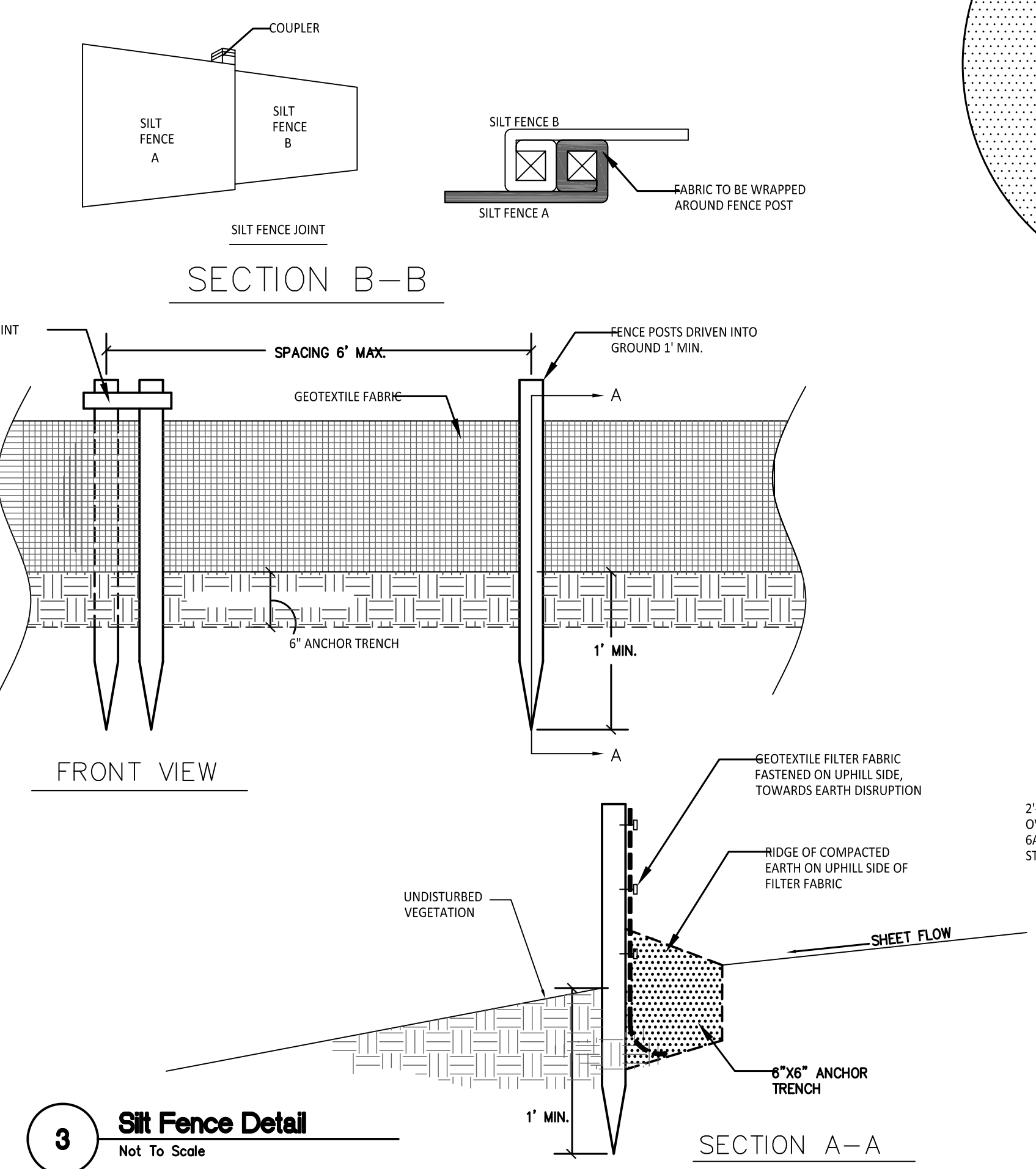
PROPOSED FEATURES LEGEND:

	EXISTING CONTOURS
	EXISTING SPOT ELEVATIONS
	PROPOSED CONTOURS
	PROPOSED SPOT ELEVATIONS
	DIRECTION AND PERCENTAGE OF SLOPE
	LEACHING BASIN. SEE DETAIL 4/C31
	UNDER DRAIN PIPE. SEE 1/C31
	UNDER DRAIN PIPE. SEE 1/C31
	INVERT ELEVATION
	TOP OF CURB ELEVATION
	BOTTOM OF CURB ELEVATION
	SILT FENCE. REFER TO DETAIL 3/C31

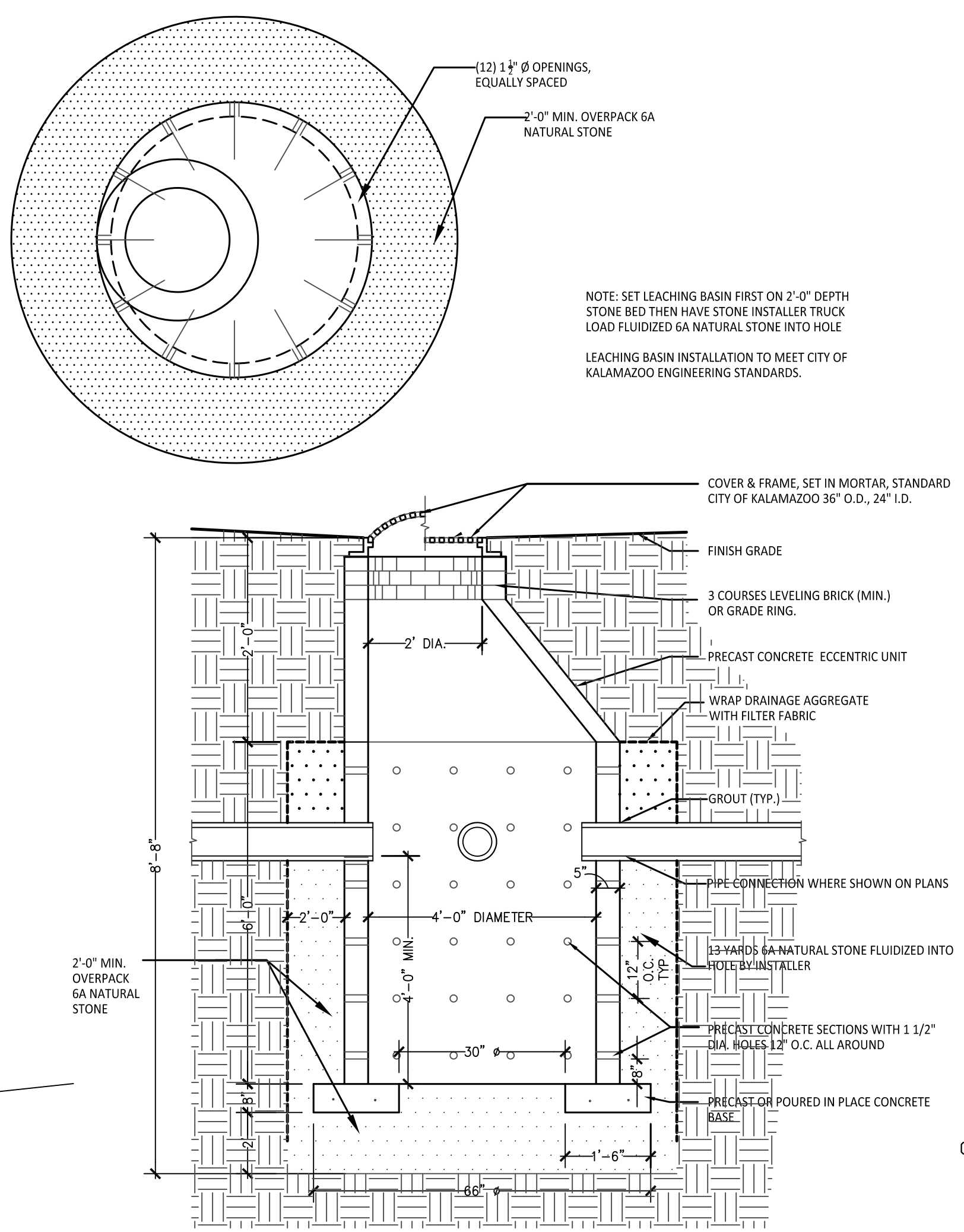
1 Underdrain Enlargement Plan
Scale: 1"=10'-0"



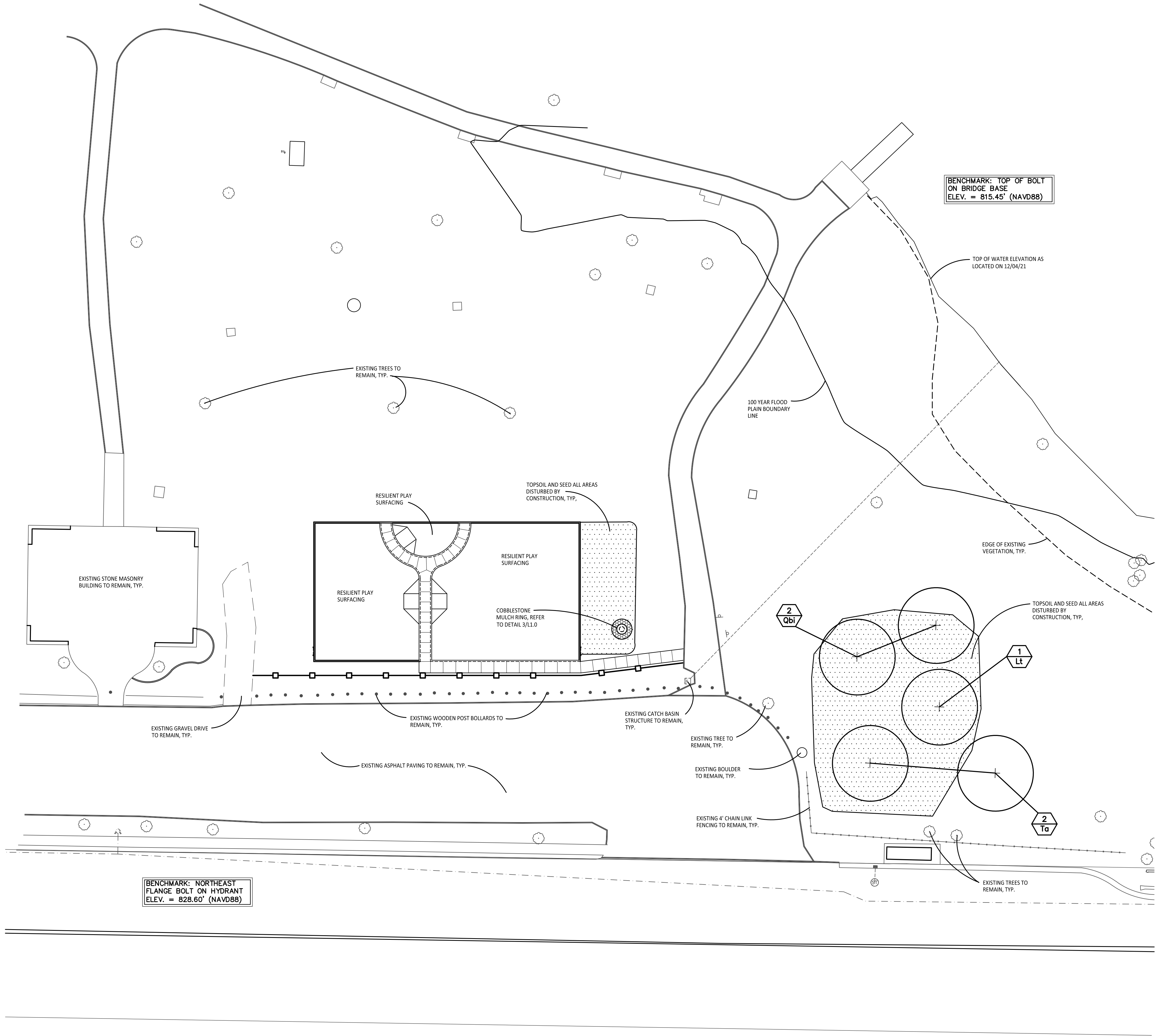
2 Playground Drainage Detail
Not to Scale



3 Silt Fence Detail
Not To Scale



4 48" Dia. Precast Concrete Leaching Basin Detail
Not to Scale



1 Overall Landscape Plan
Scale: 1"=20'-0"

LANDSCAPE NOTES:

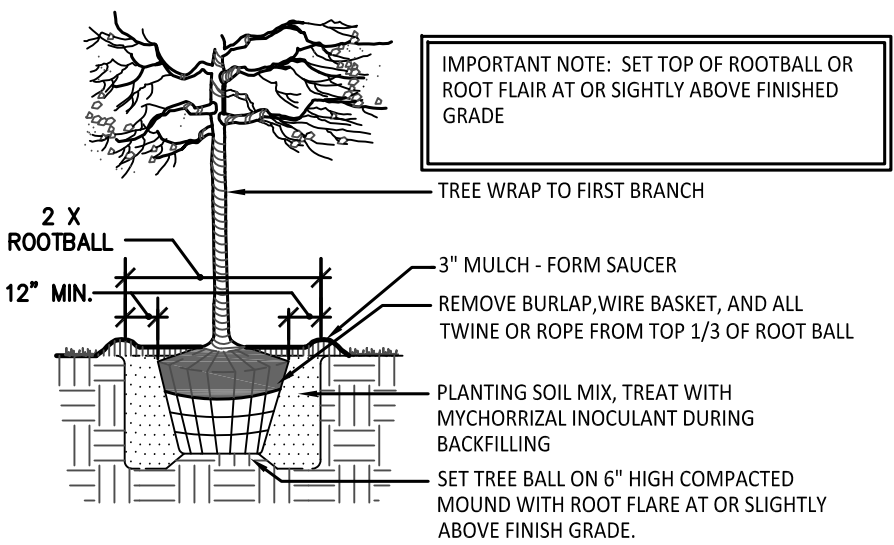
1. SURVEY OF EXISTING CONDITIONS PROVIDED BY WIGHTMAN, INC., 433 EAST RANSOM STREET, KALAMAZOO, MICHIGAN 49007, (269)327-3532.
2. CALL "MISS DIG" AND VERIFY ALL UNDERGROUND UTILITIES PRIOR TO BEGINNING WORK. 72 HOURS BEFORE YOU DIG CALL "MISS DIG" AT 1-800-482-7171. ANY UTILITIES DISTURBED BY CONSTRUCTION SHALL BE REPAIRED AT CONTRACTOR'S EXPENSE.
3. ANY DISCREPANCIES BETWEEN THESE PLANS AND ACTUAL FIELD CONDITIONS SHOULD BE REPORTED TO THE CONSTRUCTION MANAGER IMMEDIATELY FOR RESOLUTION.
4. IN AREAS OF NEW TURF PLACE 4" MINIMUM TOPSOIL, FINE GRADE + ESTABLISH TURF WITHIN SEED LIMIT LINES.
5. PLACE SHREDDED HARDWOOD MULCH TO A 3" DEPTH IN ALL TREE + SHRUB BEDS + TO A 2" DEPTH IN ALL GROUND COVER BEDS.
6. UNLESS OTHERWISE NOTED, TOPSOIL, FINE GRADE AND SEED ALL DISTURBED AREAS WITHIN THE SEEDING LIMIT SHOWN AND AREAS DISTURBED BY CONSTRUCTION.
7. REPAIR AND RESTORE ANY DAMAGE OUTSIDE OF LIMIT OF WORK LINE TO ORIGINAL CONDITION.
8. PROTECT ALL TREES AND EXISTING FEATURES TO REMAIN AS SPECIFIED.
9. ALL TOPSOIL AND EXCESS FILL MATERIAL SHALL BE STOCKPILED ON SITE SEPARATELY FOR LATER RE-USE. LOCATE STOCKPILES IN AREAS AS DIRECTED BY CONSTRUCTION MANAGER AND PROTECT FROM EFFECTS OF EROSION.
10. ALL NURSERY STOCK SHALL BE TRUE TO TYPE AND NAME. ALL STOCK SHALL BE FIRST CLASS QUALITY WITH WELL DEVELOPED BRANCH SYSTEMS AND VIGOROUS HEALTHY ROOT SYSTEMS. ALL STOCK SHALL BE WELL FORMED AND THE TRUNKS OF TREES SHALL BE UNIFORM AND STRAIGHT.
11. CONTRACTOR RESPONSIBLE TO LOCATE SITE LIGHTING SERVICES. CONTRACTOR RESPONSIBLE TO NOTIFY CONSTRUCTION MANAGER IF DAMAGE TO LIGHTING ELECTRICAL DISTRIBUTION OCCURS.
12. ALL AREAS OF TREE CLEARING SHALL BE STAKED FOR ARCHITECTS APPROVAL PRIOR TO CLEARING.
13. UNLESS OTHERWISE SPECIFIED, ALL PERENNIALS, GRASSES AND GROUNDCOVERS SHALL BE GROWN IN THEIR CONTAINER FOR ONE YEAR PRIOR TO INSTALLATION.

PROPOSED FEATURES LEGEND:

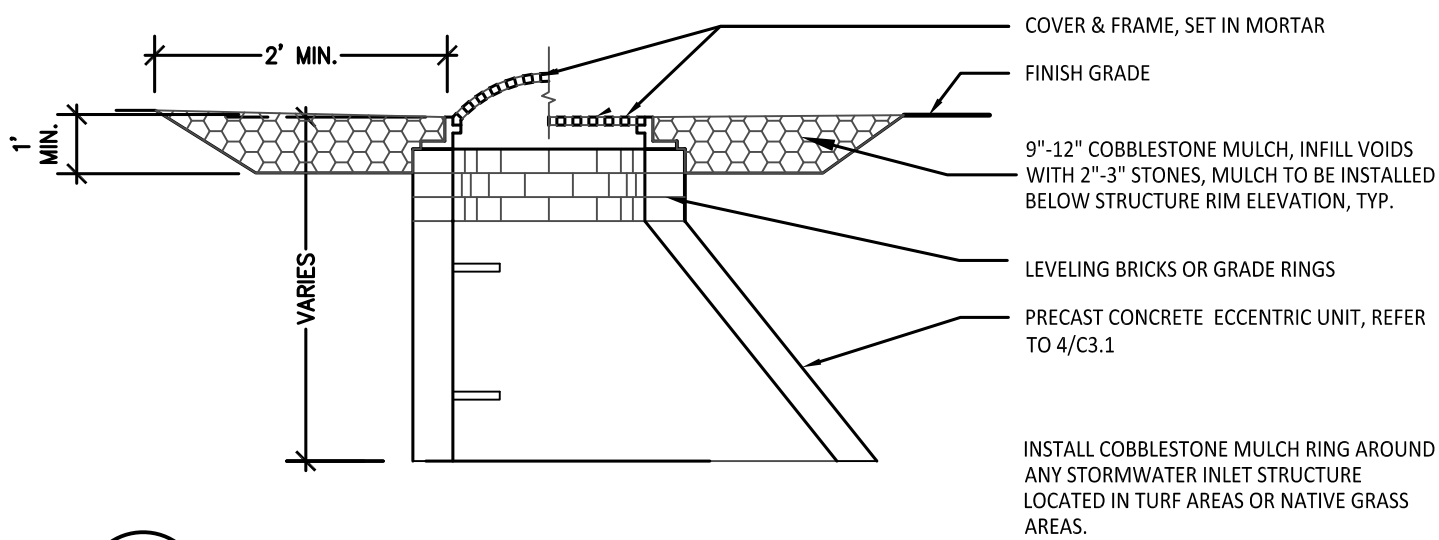
SYMBOL	DESCRIPTION	DETAIL
	DECIDUOUS TREE	2 / L10
	TURF SEEDING	
	LIMIT OF WORK	
	PLANT TAG- REFERS TO TYPE AND NUMBER OF PLANTINGS TO BE PROVIDED AND MAINTAINED BY CONTRACTOR.	

PLANT LIST:

	SYM.	BOTANICAL NAME	COMMON NAME	SIZE	ROOT
DECIDUOUS TREES	Lt	Liriodendron tulipifera	Tulip Tree	2" Cal.	B&B
	Qbi	Quercus bicolor	Swamp White Oak	2" Cal.	B&B
	Ta	Tilia americana 'Redmond'	Redmond Linden	2" Cal.	B&B



2 Tree Planting Detail
Not To Scale



3 Cobblestone Mulch Ring Detail
Not To Scale

HARD COPY IS INTENDED TO
BE 24"x36" WHEN PLOTTED.
SCALE(S) INDICATED AND
GRAPHIC QUALITY MAY NOT
BE ACCURATE FOR ANY
OTHER SIZES.

Issued For: _____ Date _____
PRE-SITE PLAN REVIEW 10-22-21
ISSUED FOR BID 04-13-22

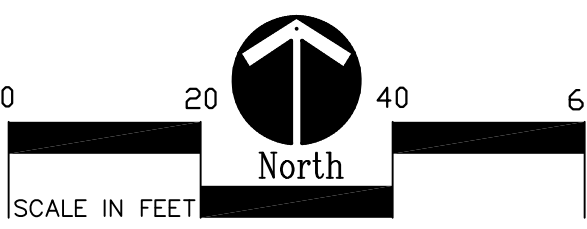
Project:

Milham Park Playground Improvements

Kalamazoo, Michigan

Sheet Title

Landscape Plan



Job No. _____ Sheet No. _____

52005

L1.0