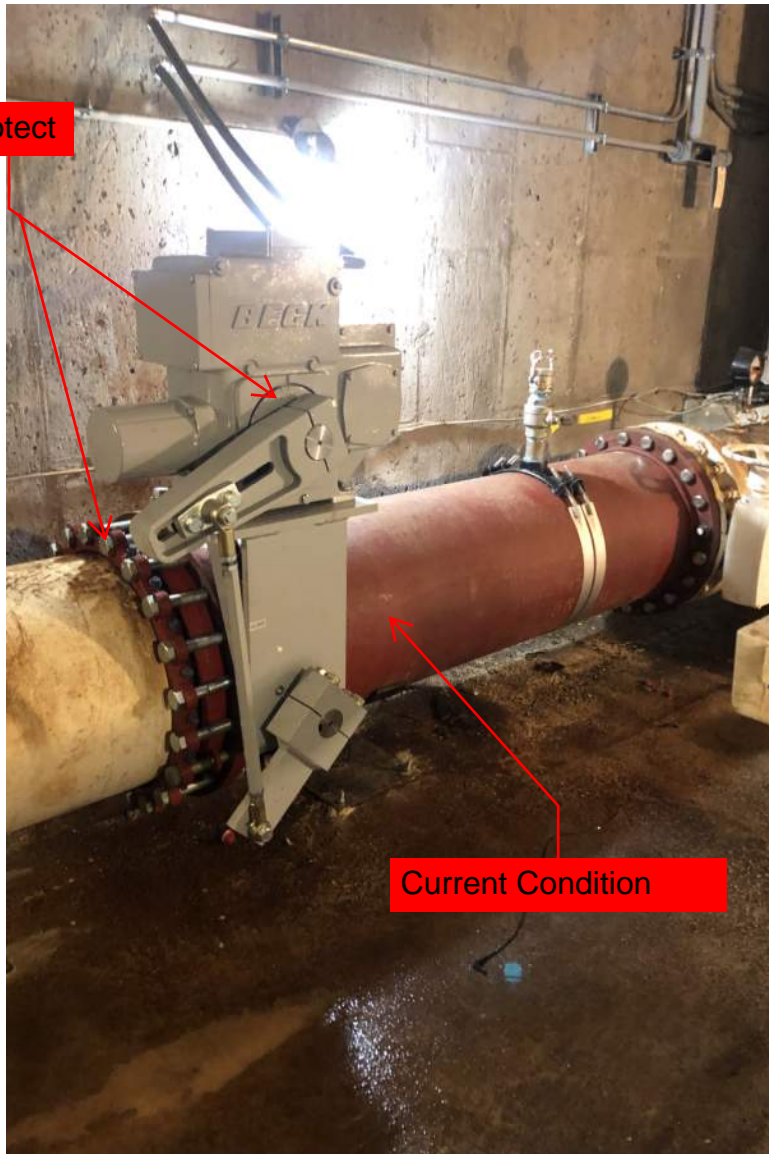
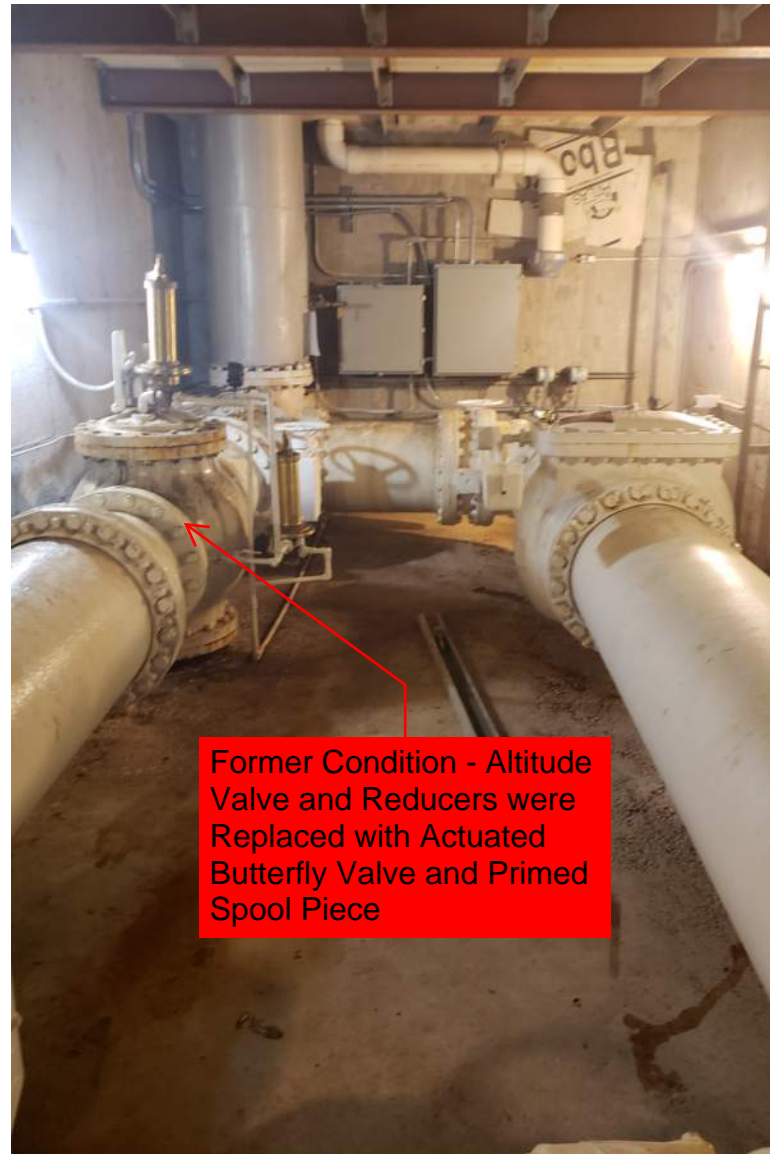


Protect

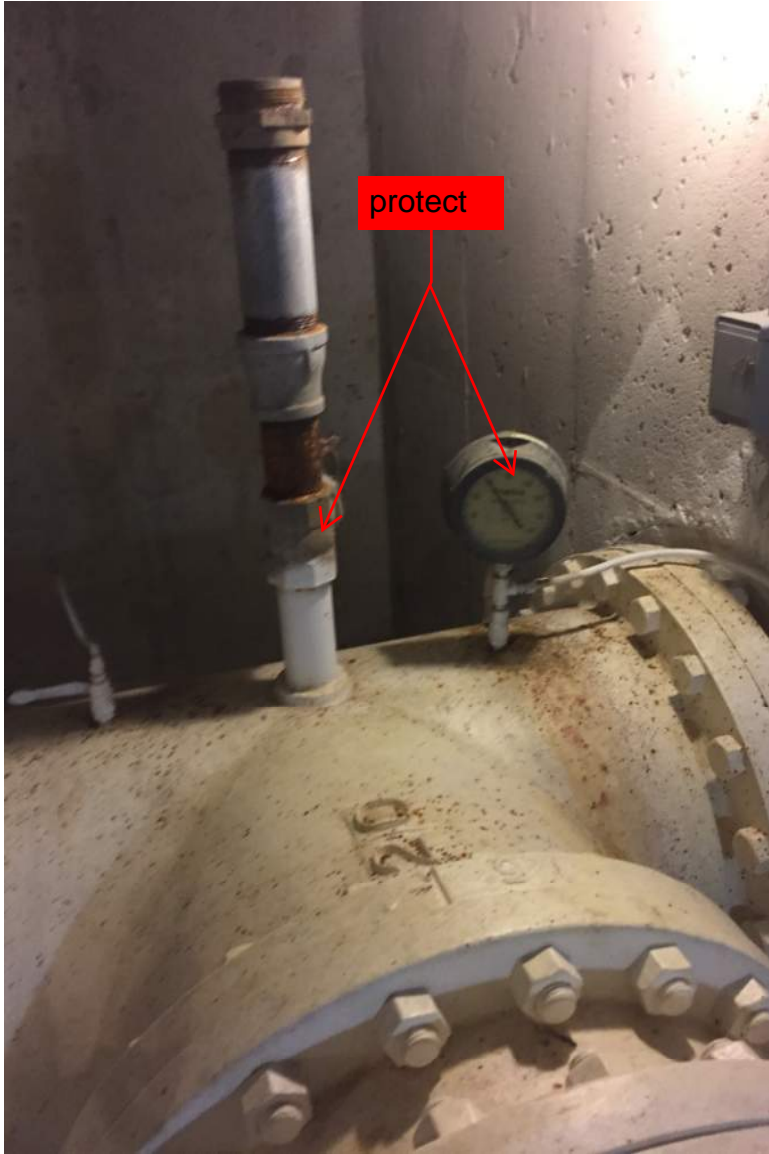


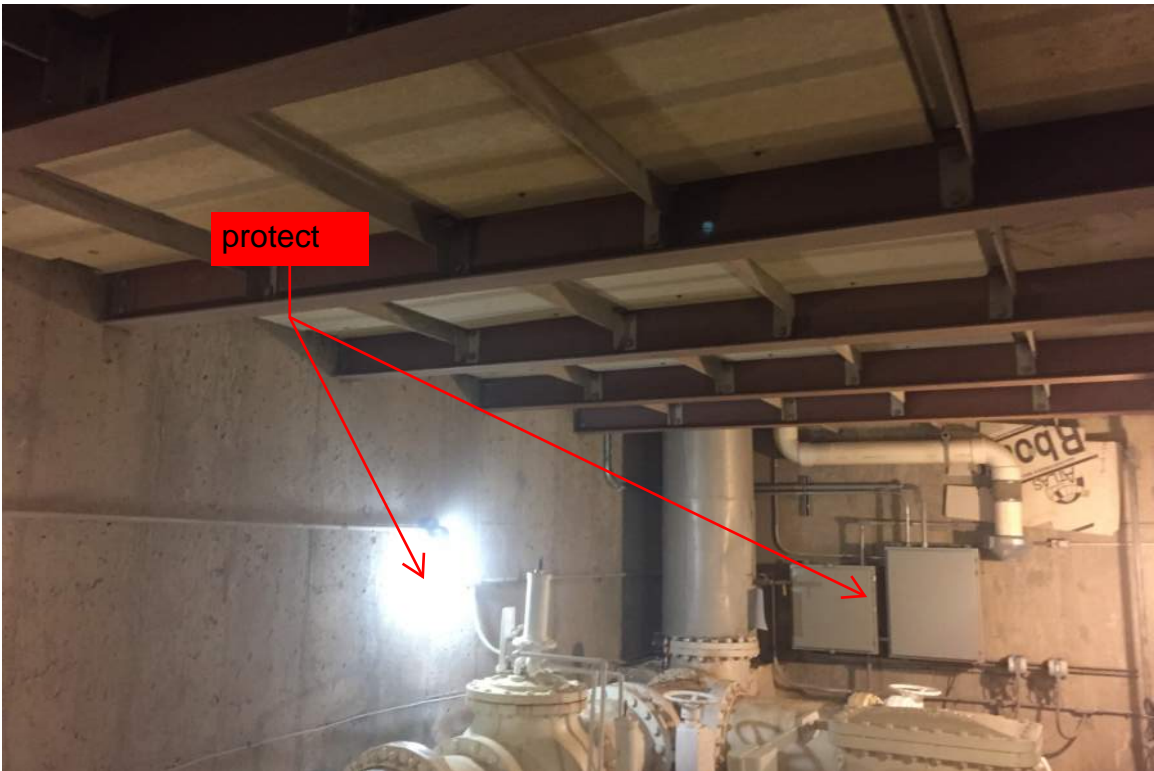
Current Condition

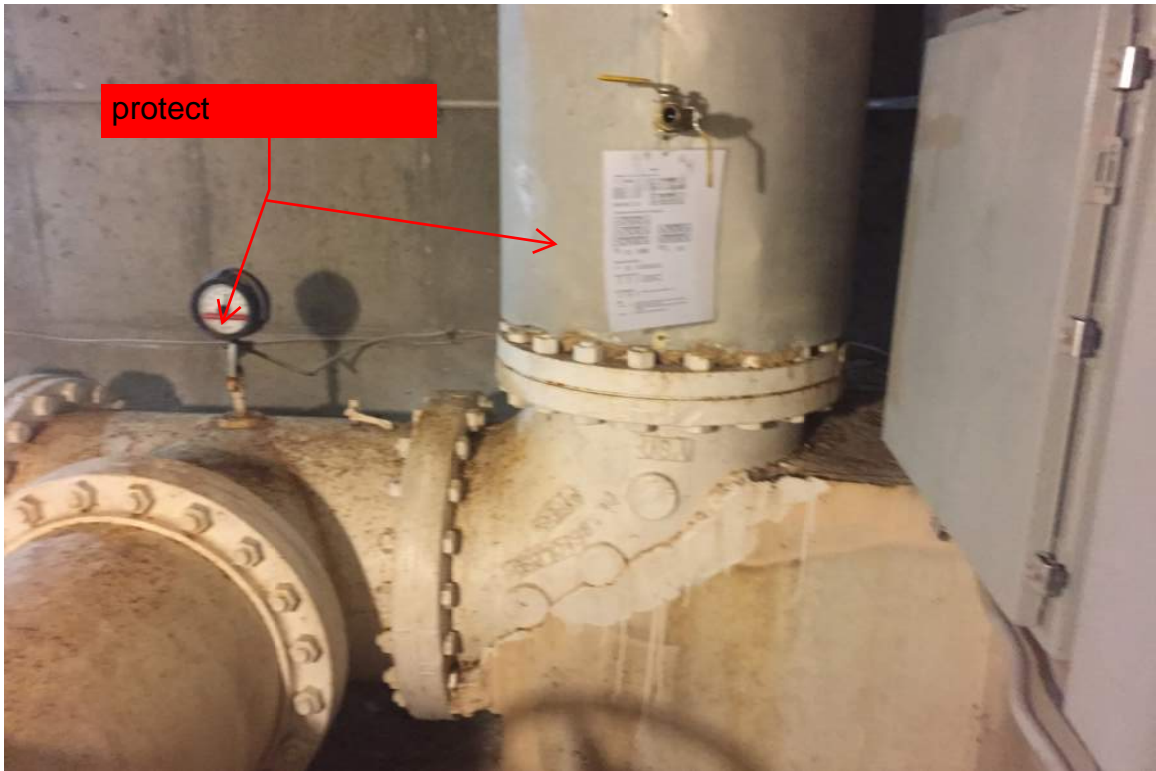


Former Condition - Altitude Valve and Reducers were Replaced with Actuated Butterfly Valve and Primed Spool Piece











Protect Electrical Equipment and Piping Above and Below Grade



Piping Located in Pit



Removable Panels



Pit Access Hatch and Ladder



Water Tower Base Slab - Ground Level Equipment and Personnel Access via Overhead Door



Removable Panels
and Beams



Access Hatch and Ladder



Imagery ©2021 Maxar Technologies, Map data ©2021 100 ft