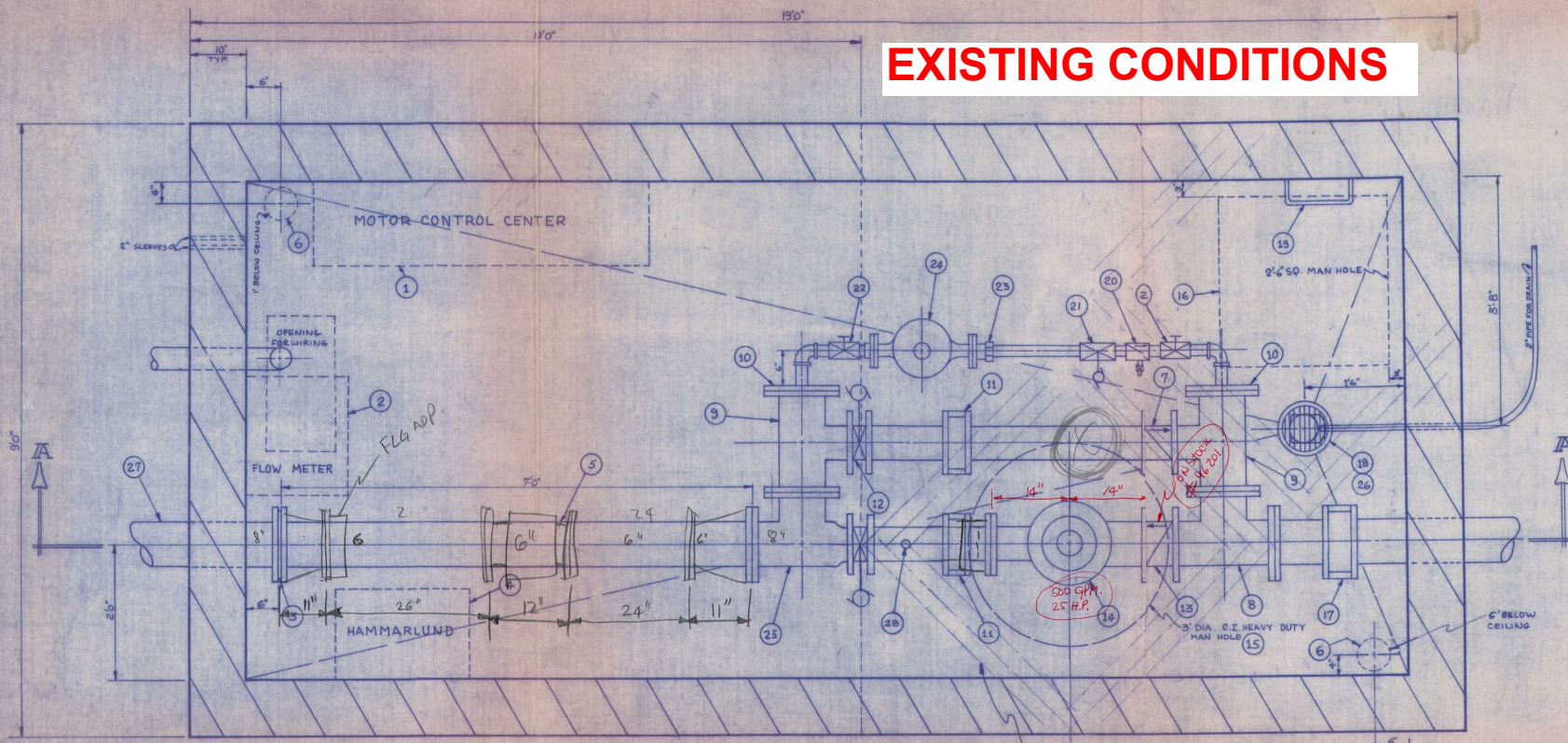


EXISTING CONDITIONS

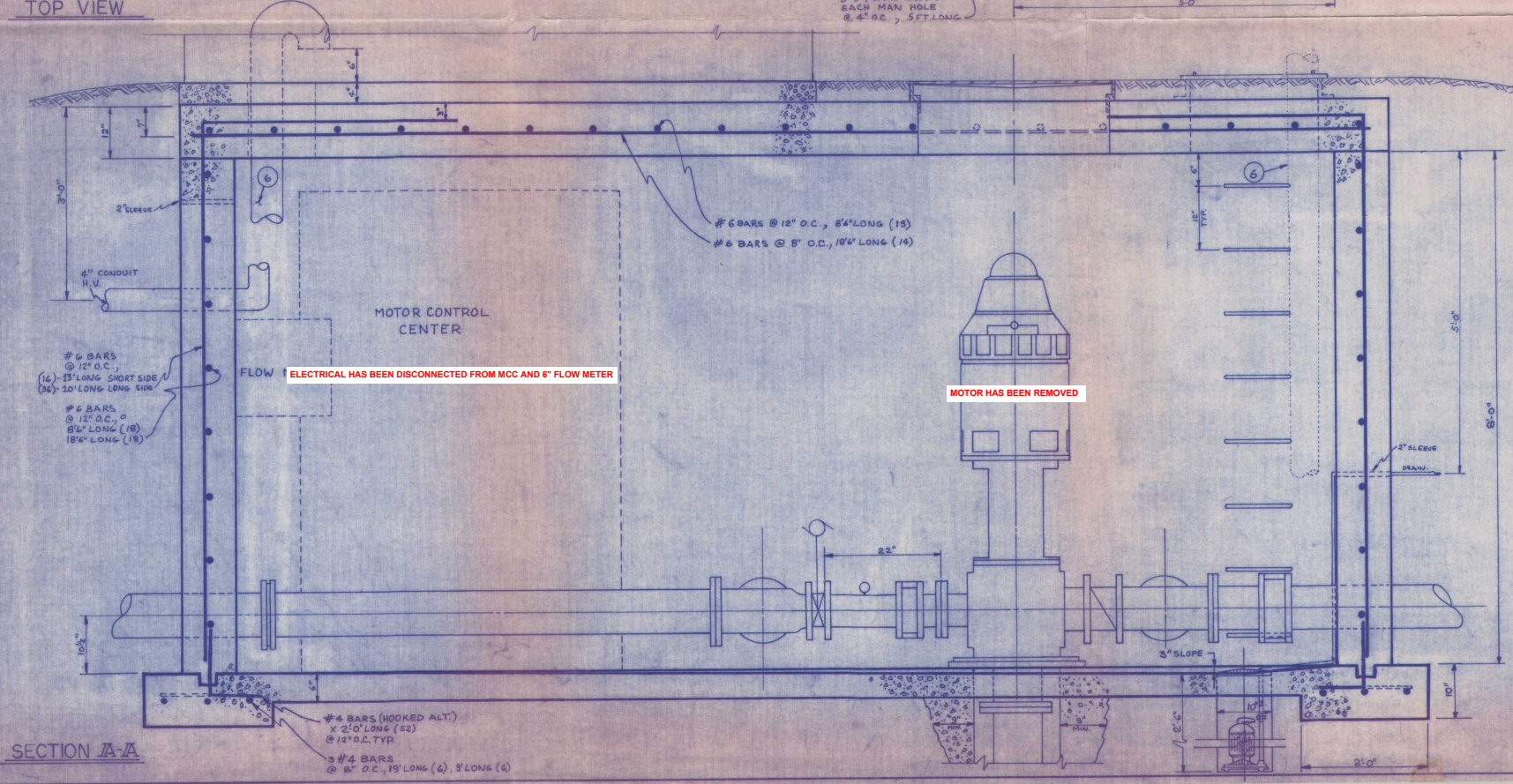


TOP VIEW



SITE PLAN

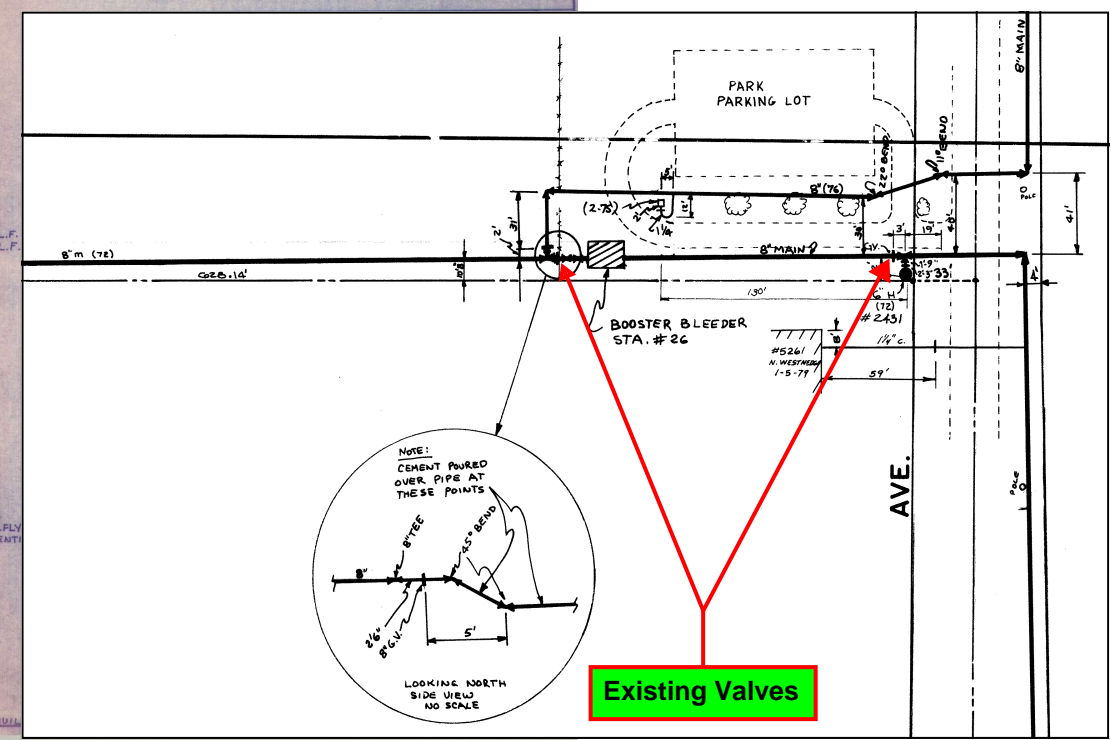
SITE LOCATION
MARKIN GLEN PARK
5271 N. WESTNEDGE AVE
KALAMAZOO, MI 49004



SECTION A-A

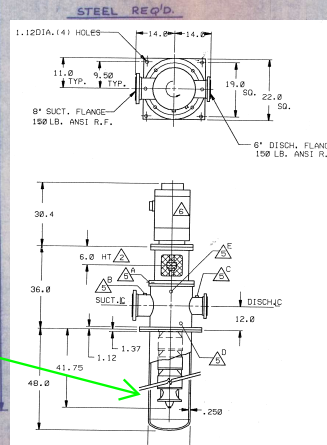
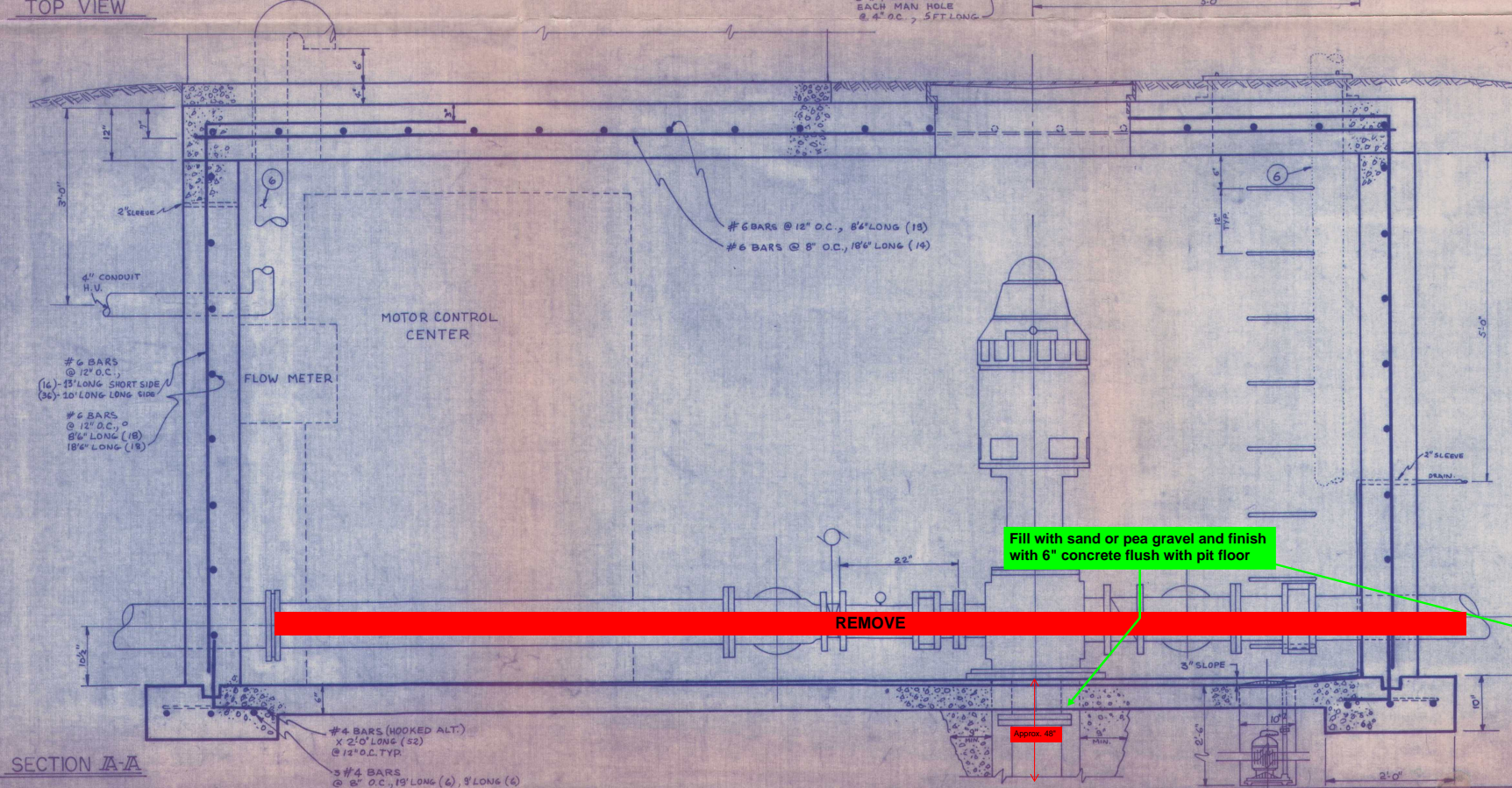
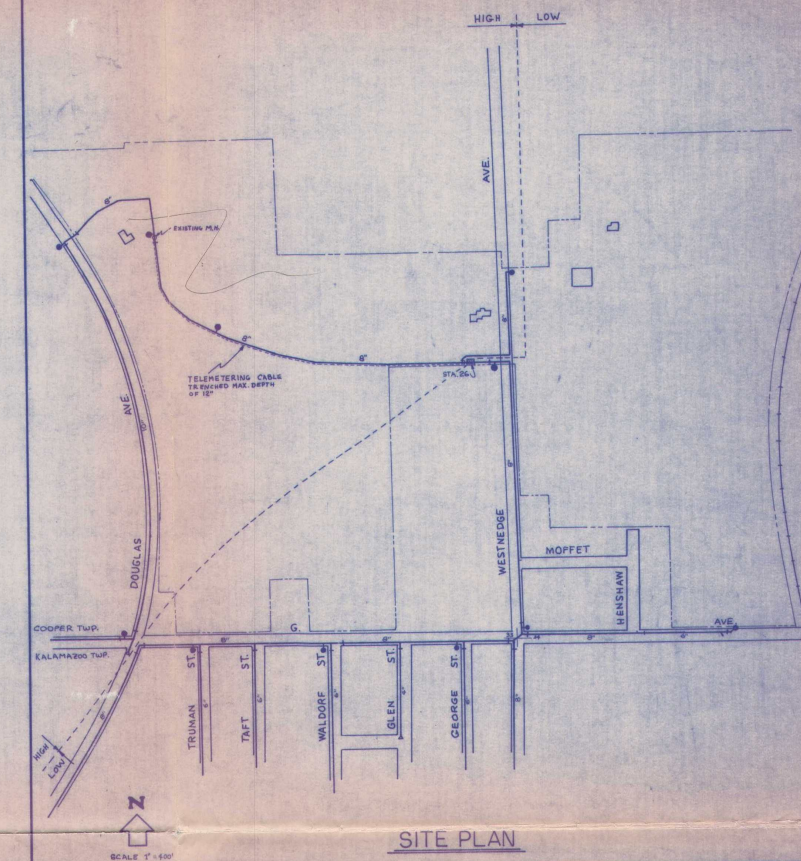
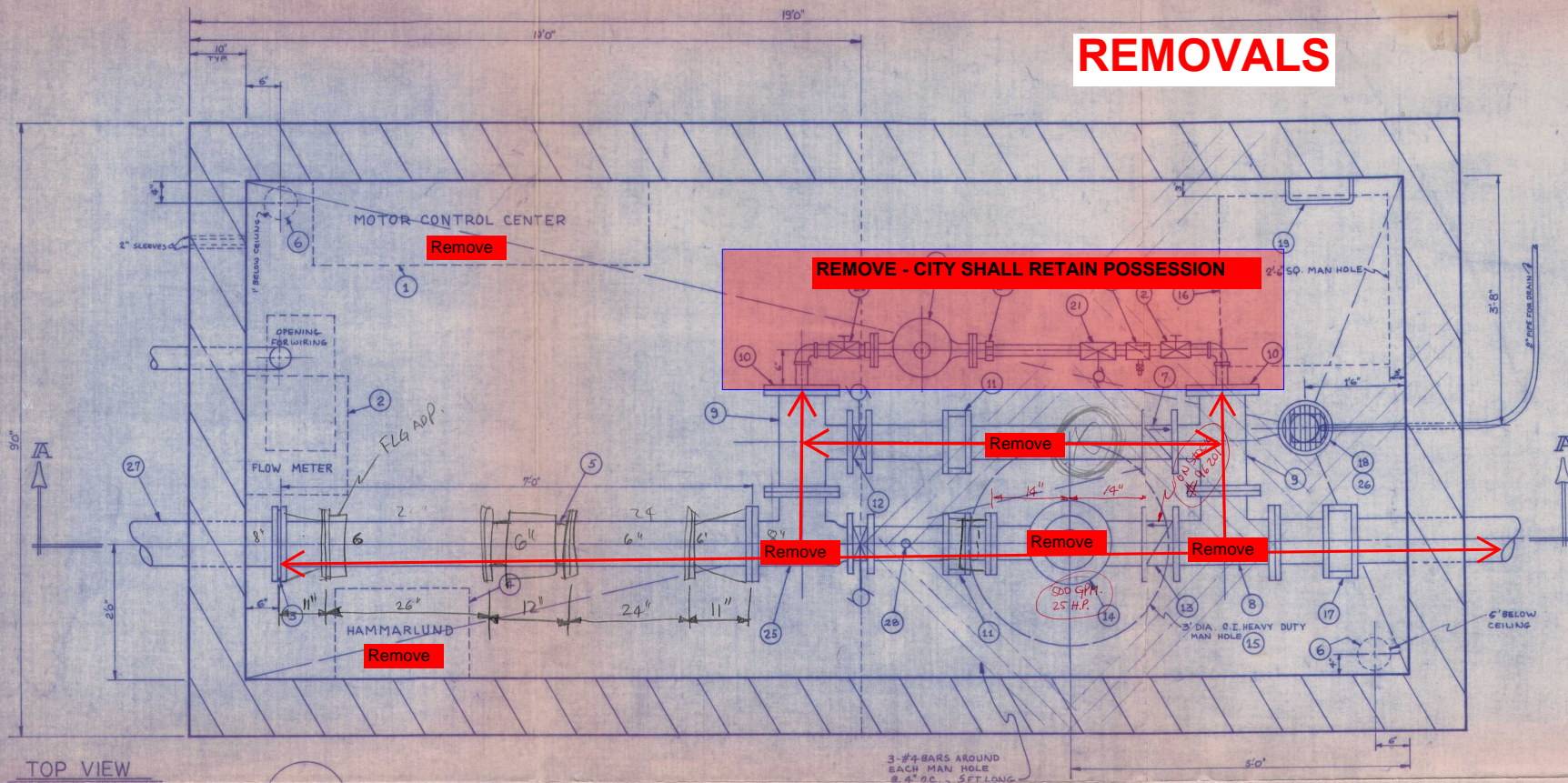
STEEL REQ'D.
 #6 BARS (3/4" #) - 1542 L.F.
 #4 BARS (1/2" #) - 245 L.F.

NOTE:
 IF DEURICK ECCENTRIC VALVES
 ARE USED IN PLACE OF BUTTERFLY
 VALVES IN ITEM #12, THE DIRECTION
 OF THE PIPING WILL CHANGE.



CITY OF KALAMAZOO
STATION 26 PROJECT
 EXISTING CONDITIONS
SHEET 1 OF 4

REMOVALS

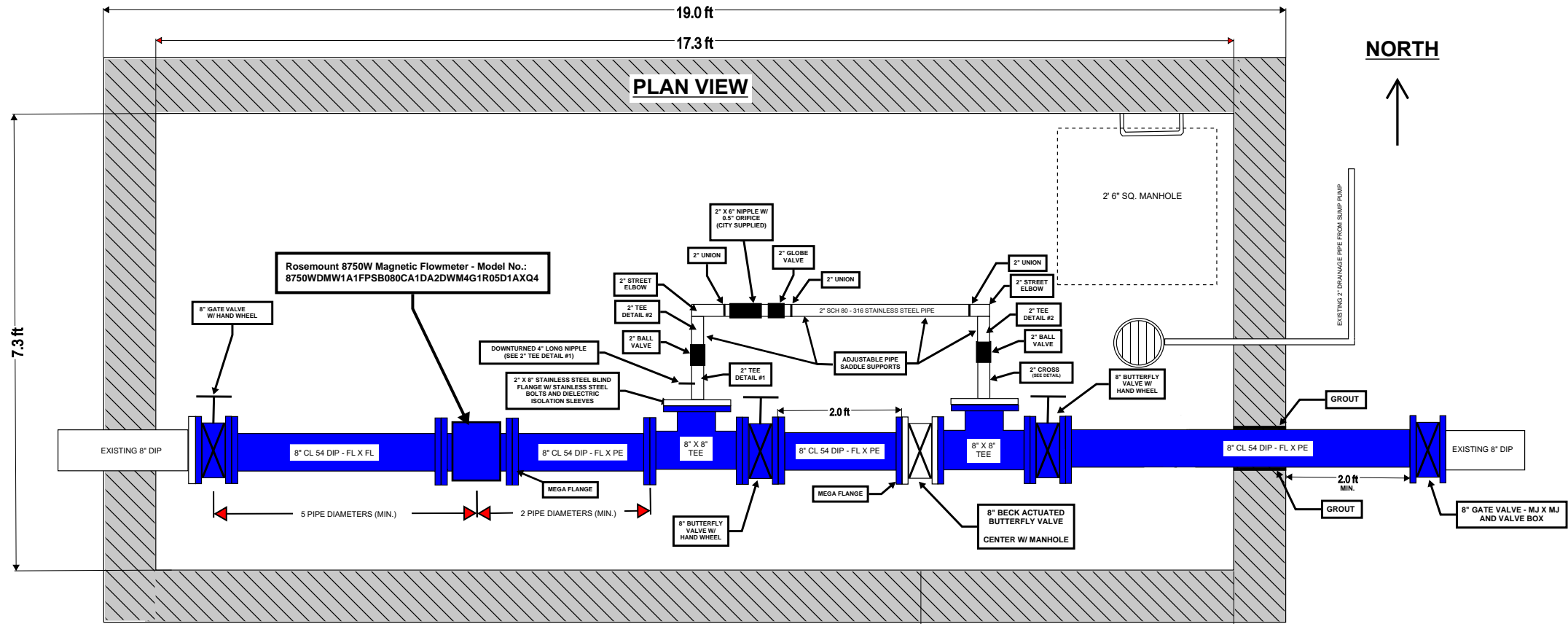


28	FLOW SW., HARWELL CO. Q-5/6 L/B, FOR 6" PIPE	1
27	8" X 7'-0" MIN. PIPE, FLANGED TO SPIGOT	1
26	SUMP PUMP	1
25	8" X 8" RED. TEE (F&D)	1
24	2" ROCKWELL, METRIC METER (FLG)	1
23	2" FORD, LOK-PAK METER COUPLING, CAT.# 7FP	1
22	2" FORD, BALL VALVE # B11-777 (F&D) W/HANDLE	2
21	2" ITT GENERAL CONTROLS, HYDRAMOTOR VALVE	1
20	2" HAMMOND, CHECK VALVE, BRONZE, (F&D) 3/4" DRAIN	1
19	12" CAST IRON MANHOLE STEPS	1
18	10" DRAIN COVER	1
17	8" SMITH BLAIR PIPE COUPLING	1
16	2'-6" SQ. BILCO, FLOOR DOOR, TYPE: J-1 STEEL	1
15	30" EAST JORDAN M/H COVER AND BASE	1
14	PUMP AND MOTOR	1
13	8" MISSION CHECK VALVE	1
12	4" DEZURICK 8/FV ELEC. OPERATOR W/HANDWHEEL	2
11	6" SMITH BLAIR PIPE COUPLING	2
10	8" BLANK FLG. WITH 2" TAP	2
9	8" X 6" TEE (FLG)	2
8	8" X 8" TEE (FLG)	1
7	6" MISSION CHECK VALVE	1
6	6" VENT, P.V.C., WITH SCREEN OUTSIDE END	2
5	8" X 7'-0" SPOOL, D.T. (FLG)	1
4	HAMMARLUND, TELEMETRY	1
3	8" ORIFICE PLATE, OPENING SIZE:	1
2	BRISTOL, FLOWMETER, 3 PEN RECORDER	1
1	ALLEN BRADLEY, MOTOR CONTROL CENTER, 3SEC, 2100	1
NR	DESCRIPTION	QTY

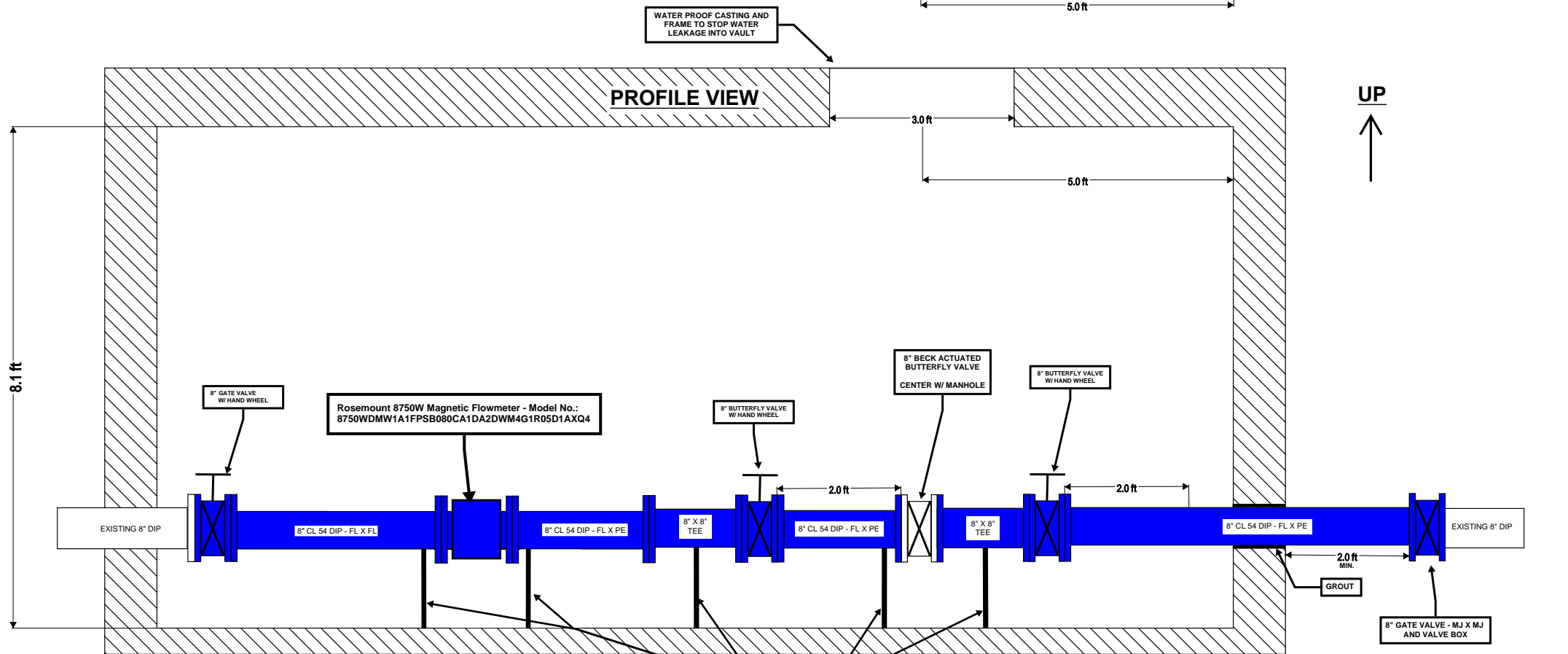
BILL OF MATERIAL			
CITY UTILITIES			
415 STOCKBRIDGE AVE. KALAMAZOO, MICH.			
STATION # 26			
PIPING AND BUILDING LAYOUT			
REV.	SCALE	DATE	DRAWN BY
11-3-76	1" = 1'-0"	6/15/76	A.F.
			1 of 5

CITY OF KALAMAZOO
STATION 26 PROJECT
 REMOVALS
 SHEET 2 OF 4

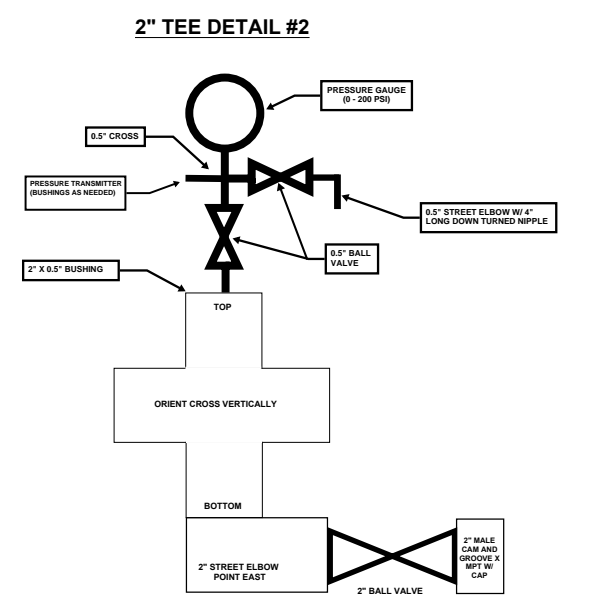
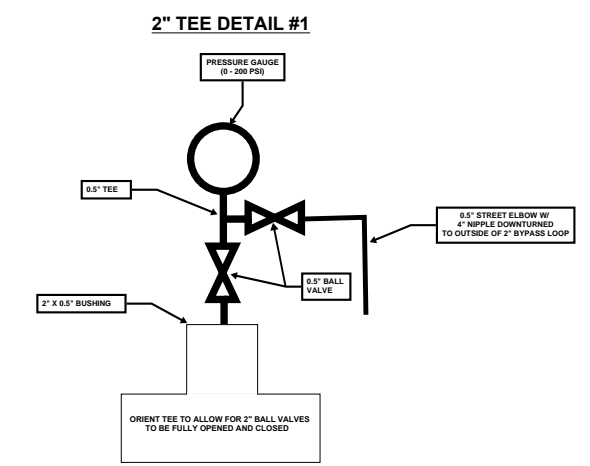
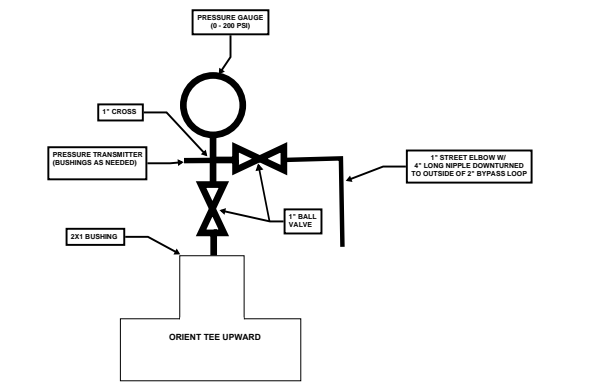
NEW EQUIPMENT INSTALLATION



SCALE VARIES - CONTRACTOR TO VERIFY AND IS RESPONSIBLE FOR ALL MEASUREMENTS



SCALE VARIES - CONTRACTOR TO VERIFY AND IS RESPONSIBLE FOR ALL MEASUREMENTS



ALL PIPE, FITTINGS AND VALVES SMALLER THAN 8" DIAMETER SHALL BE SCH 80 - 316 STAINLESS STEEL AND NSF-61 CERTIFIED.

2" STAINLESS STEEL PIPE AND NIPPLES SHALL BE FURNISHED AND INSTALLED BY CONTRACTOR AS NECESSARY TO ALLOW FOR FULL AND PROPER OPERATION OF ALL INSTALLED EQUIPMENT.

BUTTERFLY VALVES SHALL BE INSTALLED WITH THE ACTUATOR/HANDWHEEL ON THE NORTH SIDE OF THE PIPING (INTERIOR SIDE OF VAULT).

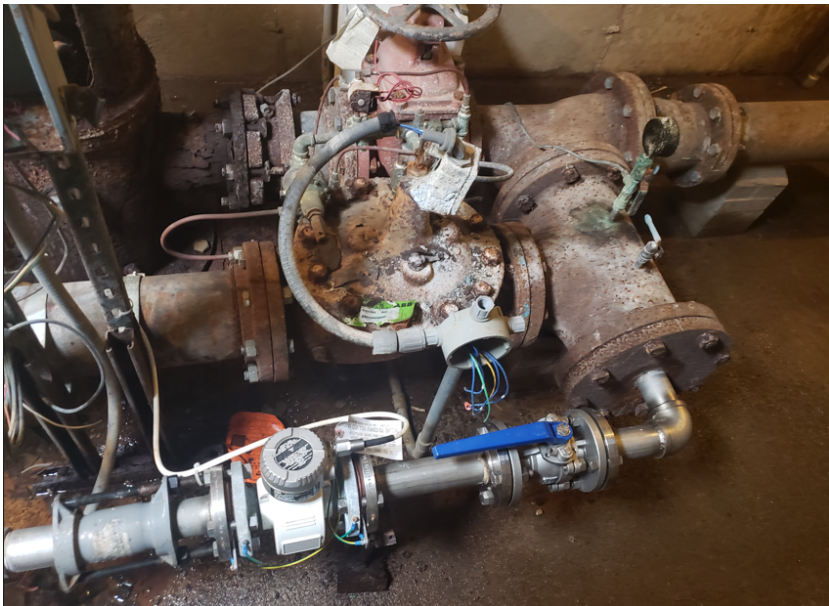
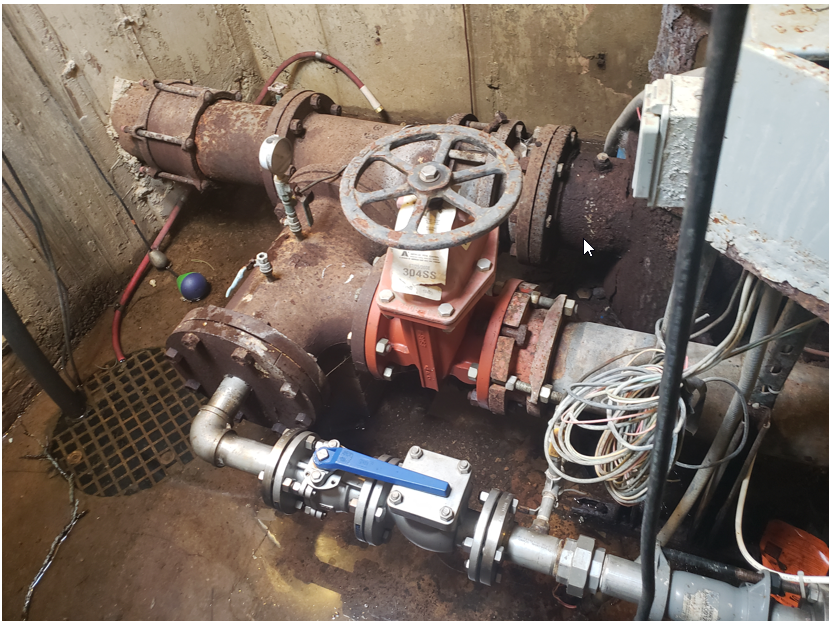
MOUNT FLOW METER IN ACCORDANCE WITH MANUFACTURER RECOMMENDATIONS.

ELECTRICAL WORK TO BE PERFORMED BY OTHERS UNDER SEPARATE CONTRACT AT A LATER DATE.

**CITY OF KALAMAZOO
STATION 26 PROJECT
PROPOSED EQUIPMENT INSTALLATION**

SHEET 3 OF 4

ALL WORK AND MATERIALS SHALL BE IN ACCORDANCE WITH CITY OF KALAMAZOO STANDARD SPECIFICATIONS FOR WATER MAIN AND SERVICE INSTALLATION 2021, PROJECT PLANS AND PROJECT SPECIFICATIONS



**CITY OF KALAMAZOO
STATION 26 PROJECT**
Existing Conditions - Photographs
SHEET 4 OF 4