

CITY OF KALAMAZOO, MICHIGAN WATER STATION NO.26 ELECTRICAL AND INSTRUMENTATION UPGRADES

1136 OAK VALLEY DRIVE, SUITE 100
ANN ARBOR, MI 48108
PHONE: (734) 665-6000 FAX: (734) 213-3003

www.tetratech.com



ELECTRICAL SHEETS

- E-1 ELECTRICAL LEGEND
- E-2 ELECTRICAL NOTES
- E-3 ELECTRICAL DEMOLITION SITE PHOTOS
- E-4 ELECTRICAL EXISTING BACKGROUND DRAWING DEMOLITION PHOTOS
- E-5 ELECTRICAL BACKGROUND PLAN PROPOSED WORK
- E-6 ELECTRICAL EXISTING BACKGROUND DRAWING
- E-7 ELECTRICAL DETAILS

INSTRUMENTATION SHEETS

- I-1 INSTRUMENTATION LEGEND
- I-2 INSTRUMENTATION NOTES
- I-3 INSTRUMENTATION SYSTEM CONFIGURATION DRAWING
- I-4 INSTRUMENTATION PROCESS FLOW DIAGRAM
- I-5 INSTRUMENTATION CONTROL PANEL LAYOUT, WIRING DIAGRAM
- I-6 INSTRUMENTATION CONTROL PANEL WIRING DIAGRAM
- I-7 INSTRUMENTATION CONTROL PANEL WIRING DIAGRAM
- I-8 INSTRUMENTATION DETAILS

PROJECT LOCATION:

KALAMAZOO, MICHIGAN

CLIENT INFORMATION:

CITY OF KALAMAZOO

Tt PROJECT No.:

200-19743-25005

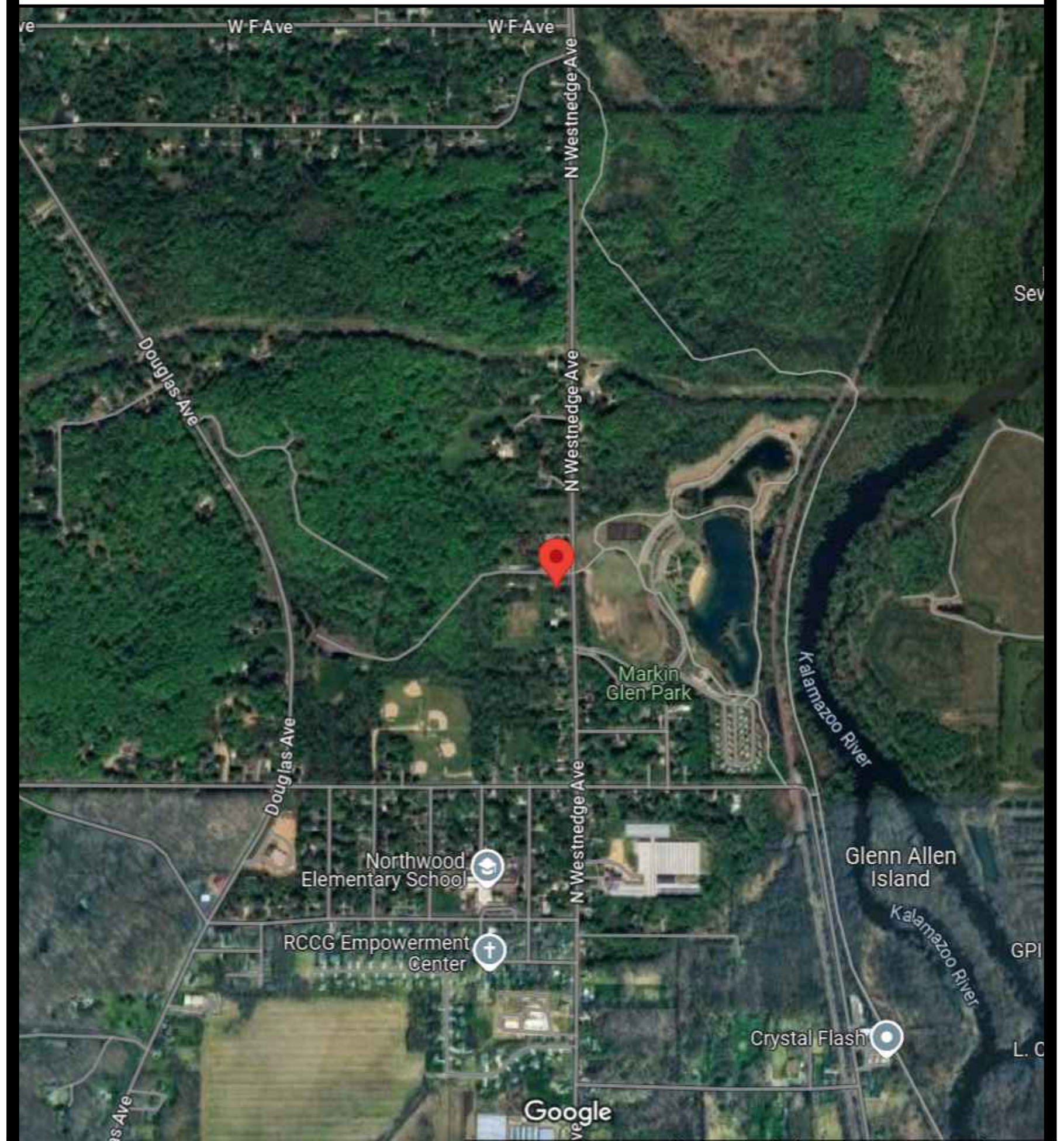
CLIENT PROJECT No.:

PROJECT DESCRIPTION / NOTES:

ISSUED:

OWNER REVIEW 1-20-25
TETRATECH REVIEW COMMENTS 2-5-25
UPDATED 5-12-25
UPDATED 5-14-25
UPDATED 5-16-25
UPDATED 6-19-25
OWNER REVIEW 7-3-25
UPDATED 7-8-25
FOR BIDDING AND CONSTRUCTION 7-16-25

VICINITY MAP:



7/7/2025 7:25:21 PM - \\TIT\LOCAL\PROJECTS\ANN ARBOR\19743\200-19743-25005\CAD\SHHEETFILES\E-3_SITE PLAN.DWG - SHANK, JASON

NOTES:

1. DEMOLISH EXISTING CONDUIT, WIRE, HANGERS, FITTINGS, BOXES WITHIN THE VAULT AND BETWEEN THE VAULT AND THE EXISTING OUTDOOR ELECTRICAL EQUIPMENT.
2. DEMOLISH THE EXISTING CONTROL PANEL, PANELBOARDS, LIGHT FIXTURES, LIGHTING TRANSFORMER, TERMINAL BOXES, JUNCTION BOXES, AND CONTROL PANEL.
3. TURN OVER EXISTING CONTROL PANEL, MAST PIPE, RADIO FEED LINE AND YAGI ANTENNA TO OWNER.
4. COVER HOLES IN WALLS AND FLOOR WITH MORTAR.
5. DEMOLISH WITHIN VAULT CONDUIT WIRING BOXES, INSTRUMENTS, CONTROL PANELS, LIGHTS, OUTLETS, ETC. SEE PICTURES FOR ADDITIONAL REQUIREMENTS.
6. SEE ALSO SHEET E-4 FOR ADDITIONAL INFORMATION.

EXISTING PANELBOARD

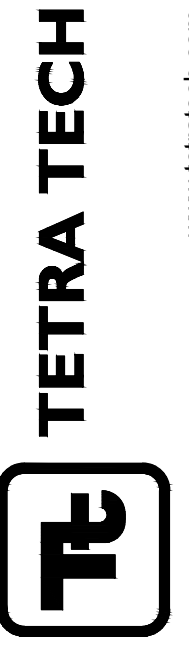
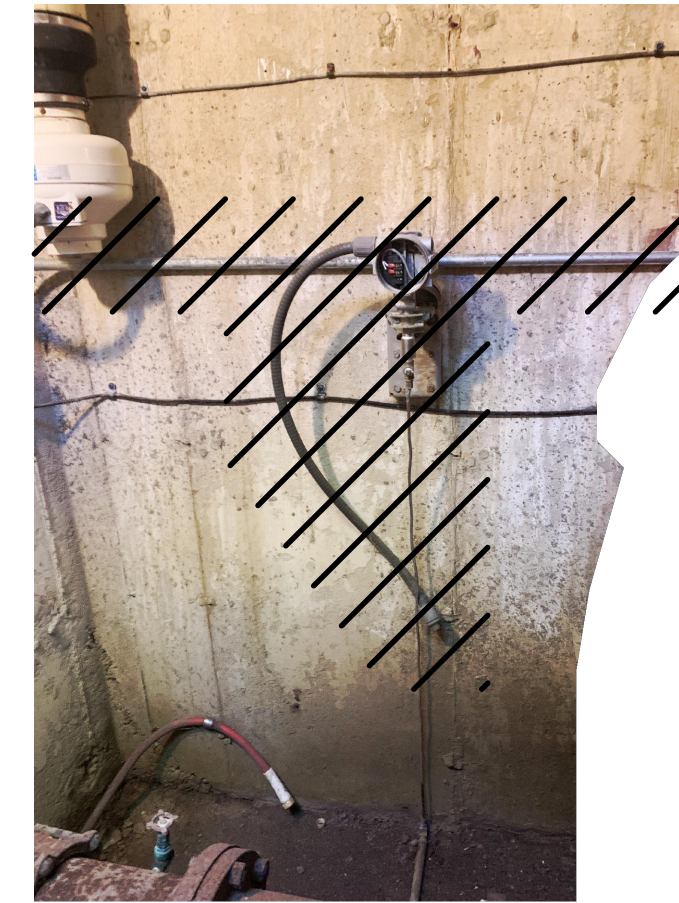
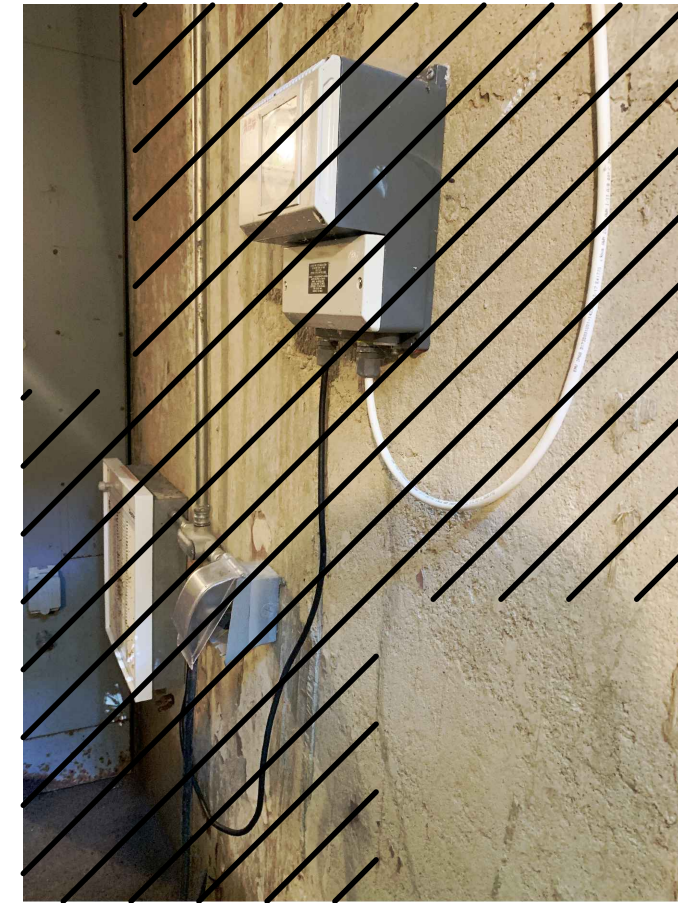
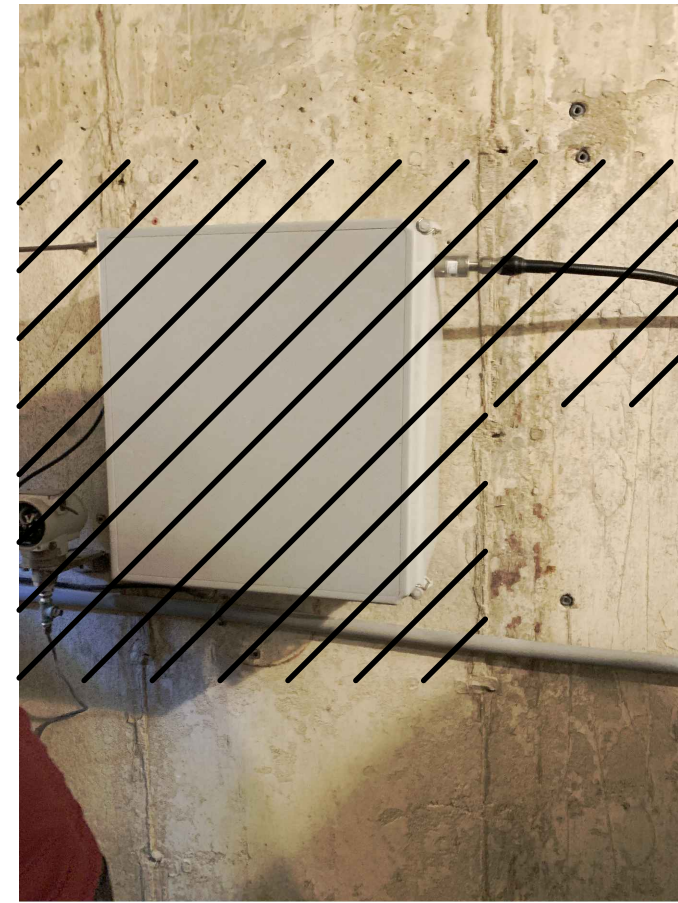
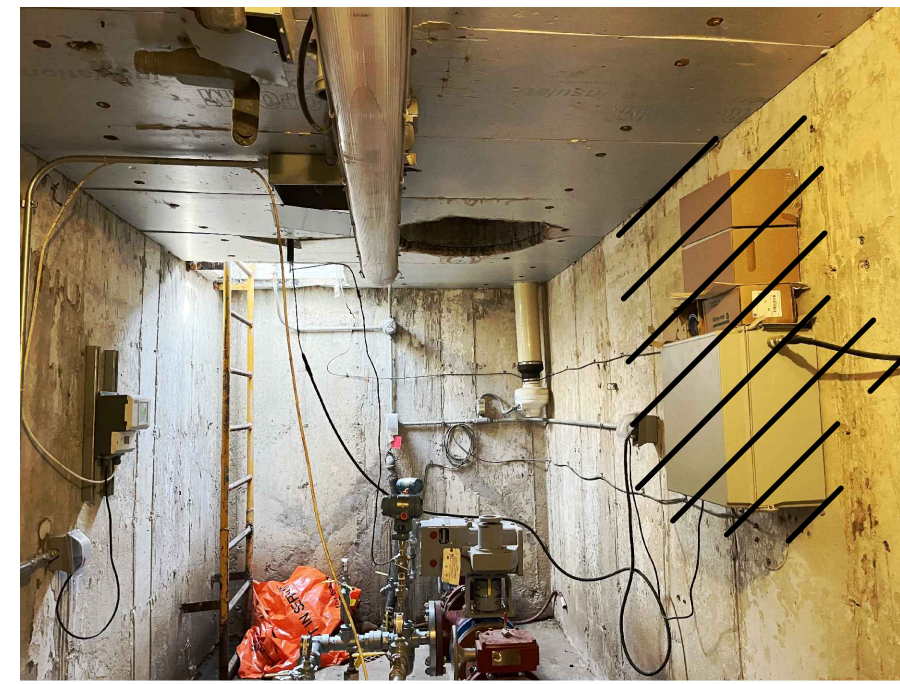
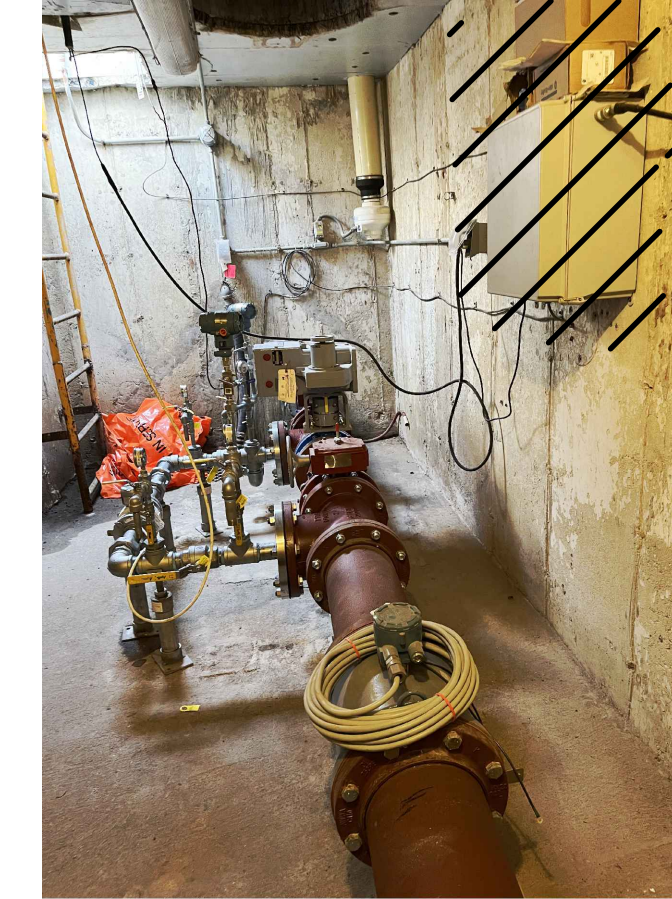


SEE NOTES.



STATION ENTRY HATCH THIS AREA.

SEE NOTES.



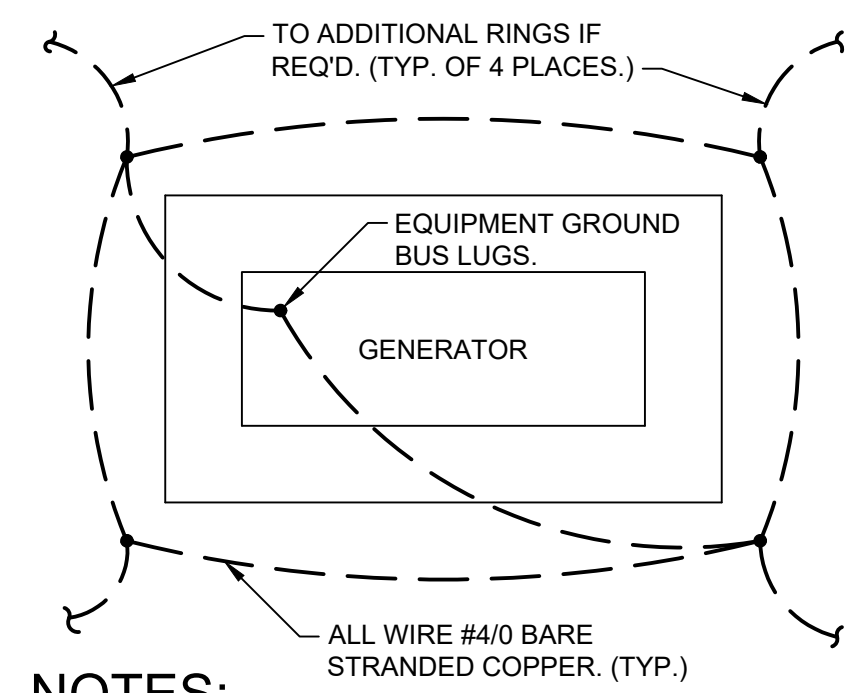
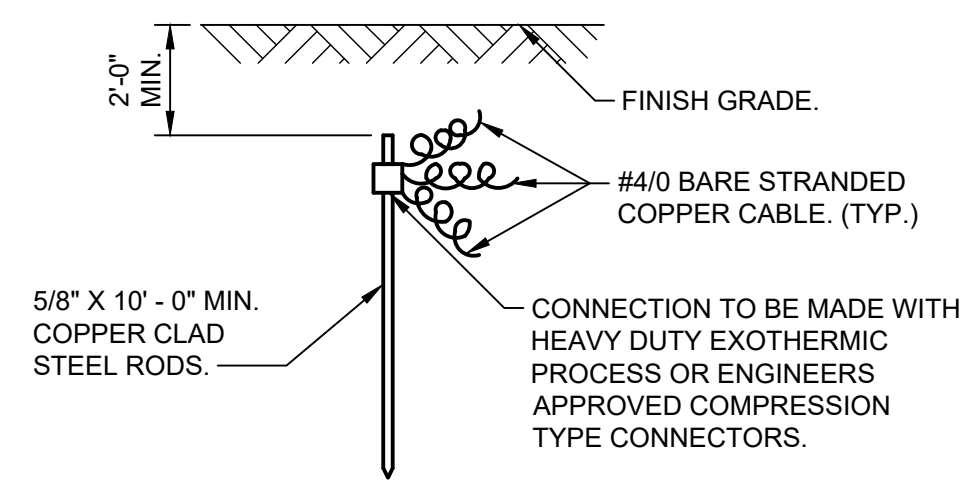
www.tetrattech.com
1136 OAK VALLEY DRIVE, SUITE 100
ANN ARBOR, MI 48108
PHONE: (734) 665-6000 FAX: (734) 213-3003

MARK	DATE	DESCRIPTION	BY

CITY OF KALAMAZOO, MICHIGAN
WATER STATION NO.26
ELECTRICAL AND INSTRUMENTATION UPGRADES
ELECTRICAL
DEMOLITION SITE PHOTOS

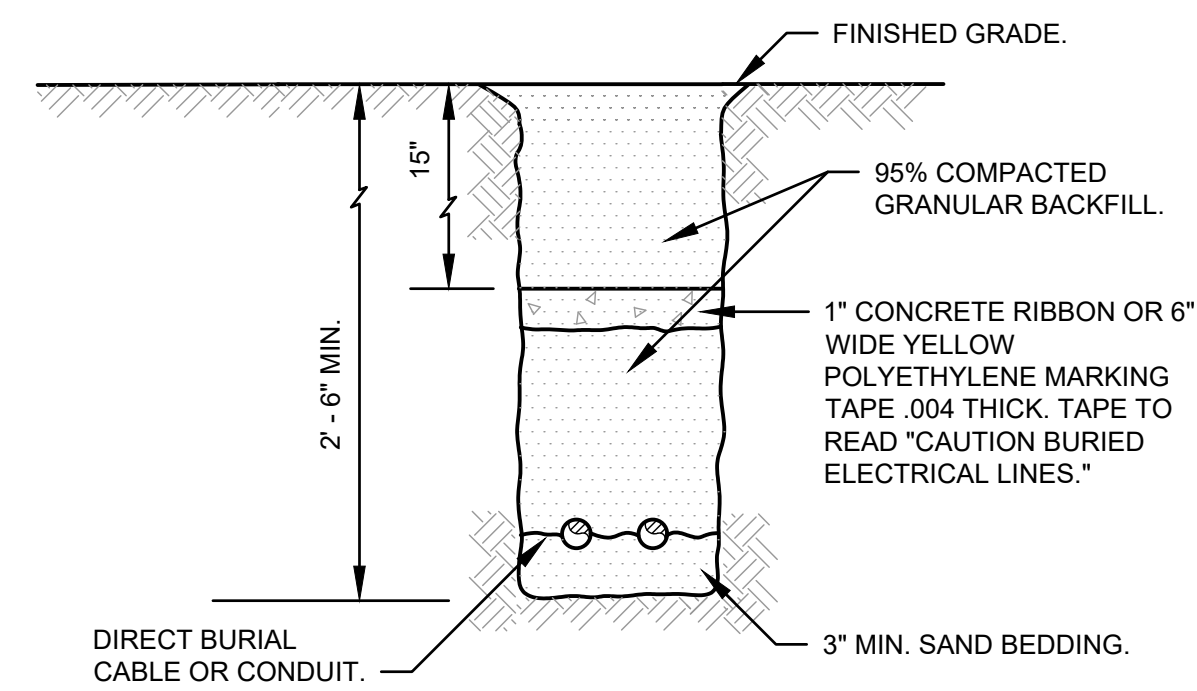
Project No.: 200-19743-25005
Designed By: G. JONES
Drawn By: J. SHANK
Checked By:

5/12/2025 6:08:14 PM - \\TT.LOCAL\IERPROJECTS\ANN ARBOR\IER19743\200-19743-25005\CAD\SHEETFILES\E-7_DET.DWG - SHANK, JASON

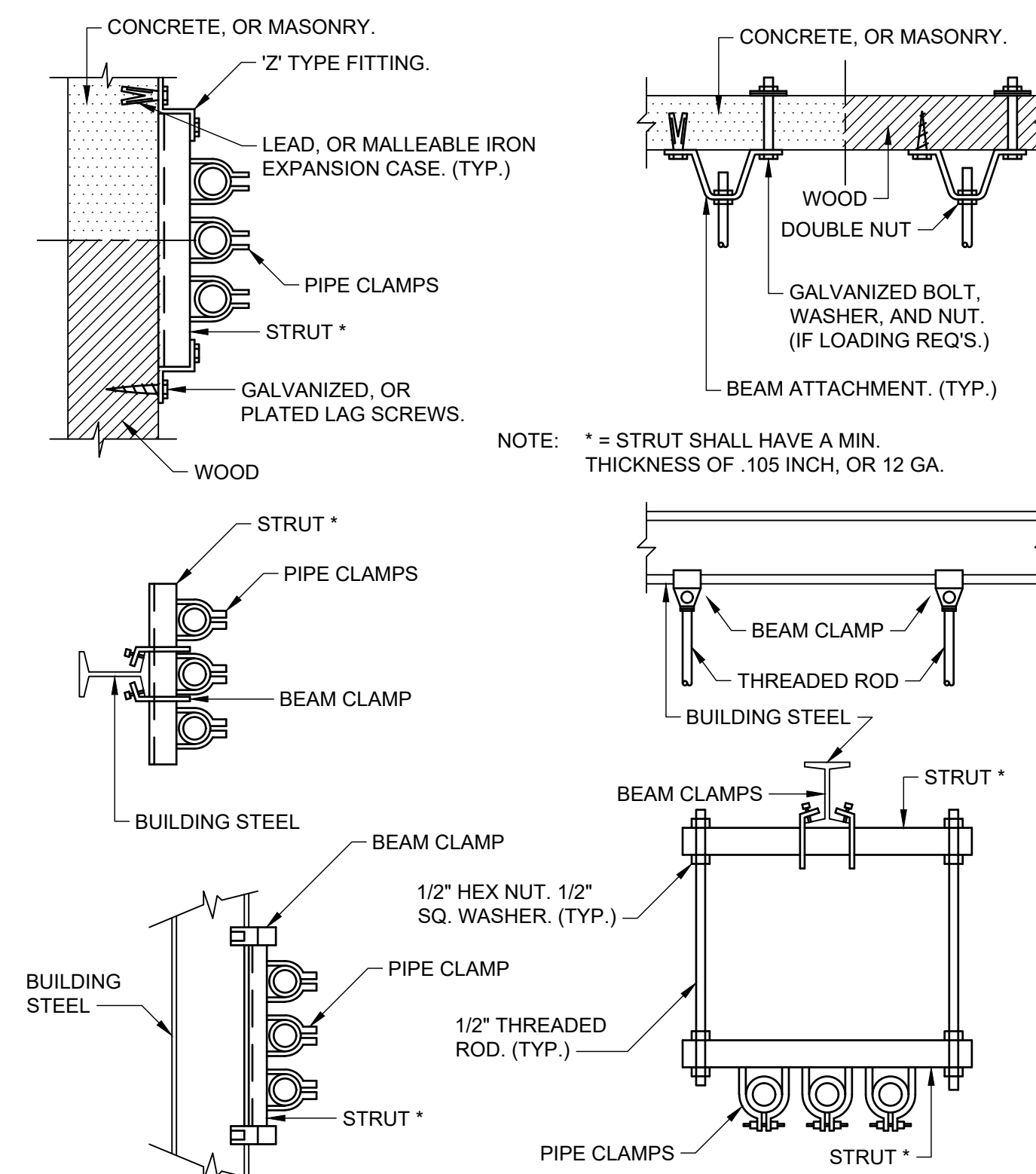


NOTES:
ADDITIONAL CONCENTRIC RINGS SHALL BE ADDED AS REQ'D. TO MEET THE (5) OHM SPECIFIED RESISTANCE. EACH RING TO HAVE 4 GROUND RODS, AND SPACE 10 FEET FROM THE INNER RING.

GROUND MAT
NO SCALE



TRENCHING DETAIL
NO SCALE



VERTICALLY RACKED AND VERTICAL RUNS
NO SCALE

HORIZONTAL RACKED SUSPENDED RUN
NO SCALE

MARK	DATE	DESCRIPTION	BY

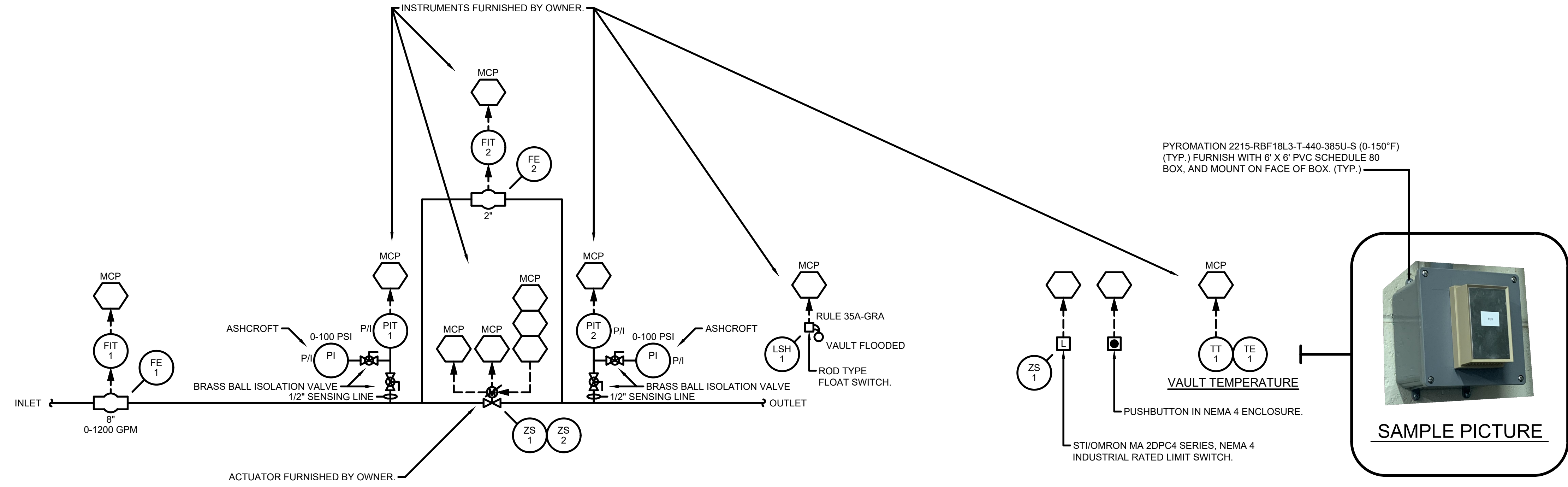
CITY OF KALAMAZOO, MICHIGAN
WATER STATION NO.26
ELECTRICAL AND INSTRUMENTATION UPGRADES
ELECTRICAL DETAILS
Project No.: 200-19743-25005
Designed By: G. JONES
Drawn By: J. SHANK
Checked By:

Copyright: Tetra Tech

Bar Measures 1 inch

NOTE:

1. INSTRUMENTS SHOWN TO BE CALIBRATED, AND COMMISSIONED BY CONTRACTOR.
2. ZS-1 LIMIT SWITCH, AND NEMA 4 PUSH BUTTON SUPPLIED, AND INSTALLED BY CONTRACTOR.



PARTIAL PROCESS FLOW DIAGRAM

MARK	DATE	DESCRIPTION

CITY OF KALAMAZOO, MICHIGAN
WATER STATION NO.26
ELECTRICAL AND INSTRUMENTATION UPGRADES
**INSTRUMENTATION
PROCESS FLOW DIAGRAM**

Project No.: 200-19743-25005
Designed By: G. JONES
Drawn By: J. SHANK
Checked By:

6/19/2025 3:14:30 PM - \\TT.LOC\ALI\PROJECTS\ANN ARBOR\19743\200-19743-25005\CAD\SHEETFILES\4_PROCESS FLOW DIAGRAM.DWG - SHANK, JASON

Copyright: Tetra Tech

Bar Measures 1 inch

